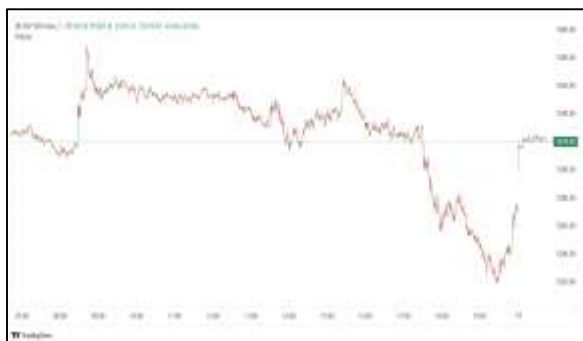


Commodities and Indices Market View

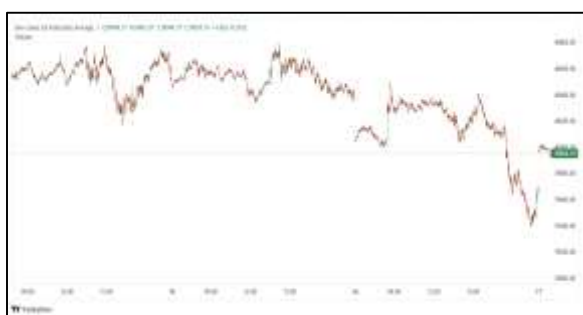
Thursday, July 2, 2026



Technicals



S&P 500	RSI (20:80)	Sto Fast
	54.73	54.67% 66.27%



Dow Jones	RSI (20:80)	Sto Fast
	65.01	80.50% 84.91%

US Stock Market

DJIA	S&P 500	NASDAQ
52,305.24	7,483.23	26,040.03
-0.03%	-0.22%	-0.66%

U.S. stocks finished slightly lower on Wednesday as technology shares fell, but gains in Meta Platforms limited the decline in the S&P 500 and Nasdaq.

The Dow Jones Industrial Average (.DJI), fell 13.96 points, or 0.03%, to 52,305.24, the S&P 500 (.SPX), lost 16.13 points, or 0.22%, to 7,483.23 and the Nasdaq Composite (.IXIC), lost 173.69 points, or 0.66%, to 26,040.03.

Volume on U.S. exchanges was 19.71 billion shares, compared with the 23.36 billion average for the full session over the last 20 trading days.

Advancing issues outnumbered decliners by a 1.07-to-1 ratio on the New York Stock Exchange. There were 353 new highs and 127 new lows on the NYSE.

On the Nasdaq, 2,661 stocks rose and 2,303 fell as advancing issues outnumbered decliners by a 1.16-to-1 ratio.

The S&P 500 posted no new 52-week highs and no new lows, while the Nasdaq Composite recorded no new highs and no new lows.

Major Economic Releases for Today

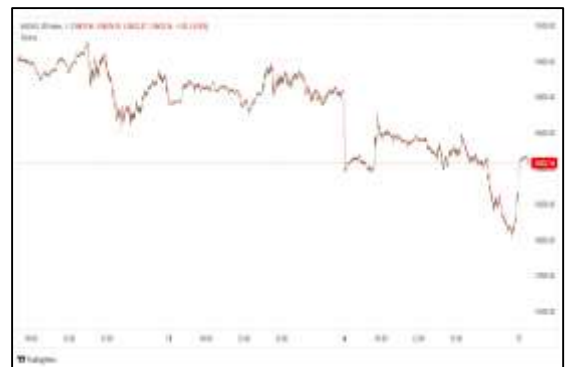
Period	Event	GMT	Forecast	Previous
JUNE	Core Harmonized Index of Consumer Prices (MoM)	2:00	--	0.30%
JUNE	Core Harmonized Index of Consumer Prices (YoY)	2:00	2.60%	2.60%
JUNE	Harmonized Index of Consumer Prices (MoM)	2:00	--	-0.10%
JUNE	Harmonized Index of Consumer Prices (YoY)	2:00	3.00%	3.20%
JUNE	Consumer Price Index (YoY)	11:00	0.50%	0.60%

Dow Jones Industrial Average

At the close in NYSE, the Dow Jones Industrial Average declined 0.02%. The best performers of the session on the Dow Jones Industrial Average were Nike Inc (NYSE:NKE), which rose 5.07% or 2.08 points to trade at 43.13 at the close. Meanwhile, Salesforce Inc (NYSE:CRM) added 4.25% or 6.66 points to end at 163.32 and Microsoft Corporation (NASDAQ:MSFT) was up 3.05% or 11.36 points to 384.38 in late trade.



The worst performers of the session were Caterpillar Inc (NYSE:CAT), which fell 6.86% or 73.10 points to trade at 991.80 at the close. Walmart Inc (NASDAQ:WMT) declined 3.88% or 4.40 points to end at 108.86 and Merck & Company Inc (NYSE:MRK) was down 2.44% or 3.13 points to 125.37.



NASDAQ 100

At the close in NYSE, the NASDAQ Composite index declined 0.66%. The top performers on the NASDAQ Composite were Linkhome Holdings Inc (NASDAQ:LHAI) which rose 315.15% to 2.74, Token Cat Ltd DRC (NASDAQ:TC) which was up 157.84% to settle at 4.77 and Sadot Group Inc (NASDAQ:SDOT) which gained 105.19% to close at 72.00.



The worst performers were INLIF Ltd (NASDAQ:INLF) which was down 42.96% to 0.03 in late trade, LQR House Inc (NASDAQ:YHC) which lost 33.54% to settle at 0.05 and Julong Holding Ltd (NASDAQ:JLHL) which was down 31.63% to 11.09 at the close.

OIL

Oil prices dropped about 1% on Thursday, down for a third consecutive day, after Qatar said Iran and the U.S. had made progress in indirect talks focused on the Strait of Hormuz, which handled one-fifth of global oil supply before the war.



Brent futures lost 7 cents or 1.1% to \$70.80 a barrel by 0256 GMT, while U.S. West Texas Intermediate crude fell 84 cents or 1.2% to \$67.74 a barrel.

Precious and Base Metals

Gold prices rose on Thursday, supported by softer than expected jobs data and lower oil prices, while the market's focus turned to today's U.S. payrolls report for fresh cues on the Federal Reserve's trajectory.

Spot gold rose 0.7% to \$4,057.92 per ounce, as of 0251 GMT, after touching its highest level since June 23 in the previous session. U.S. gold futures for August delivery inched 0.3% lower to \$4,070.10.

While gold is traditionally seen as a hedge against inflation, it loses its appeal as a non-yielding asset in a high interest-rate environment.

Spot silver rose 1.6% to \$60.06 per ounce, platinum gained 2% to \$1,607.67, and palladium added 1.4% to \$1,227.13.



Traditional Agricultures

Soybeans posted gains of 3 to 9 ½ cents across most contracts, led by the front months on Wednesday. The cmdtyView national average Cash Bean price was up 15 1/4 cents at \$10.85 1/4.

Corn futures closed Wednesday with contracts up 3 to 8 ¼ cents higher, as the front months were the leaders. The CmdtyView national average Cash Corn price was 7 cents higher at \$3.92 1/4.

The wheat complex was higher across the three exchanges on Wednesday. Chicago SRW contracts were 4 to 11 ¼ cents higher on the Wednesday session. KC HRW futures saw 4 ¾ to 12 ¼ cent gains across the board on Wednesday. MPLS spring wheat was 9 ¾ to 13 ½ cents higher at the Wednesday close.



Future Settlement Price Thursday, July 02nd, 2026					
Instrument	Last	Net Change	High	Low	Volume
S & P 500	7,548.25	4.75	7,558.00	7,522.75	50,750.00
NASDAQ 100	30,119.50	25.25	30,239.50	29,952.50	43,942.00
Dow Jones	52,686.00	18.00	52,735.00	52,562.00	4,468.00
Gold	4,077.20	-5.20	4,086.30	4,042.80	18,361.00
Silver	60.56	0.05	60.87	59.42	4,556.00
Copper	6.18	-0.07	6.26	6.09	37,995.00
Crude Oil	67.81	-0.77	68.17	67.56	10,980.00
Platinum	1,599.90	34.10	1,619.50	1,539.60	13,292.00
Palladium	1,223.40	12.50	1,237.00	1,179.00	4,058.00
Natural Gas	3.20	-0.02	3.21	3.19	2,345.00
Wheat	600-4	-4.00	600-6	597-0	3,366.00
Soy Beans	1155-2	6.00	1155-4	1147-4	7,070.00
Corn	442-4	-2.00	443-6	441-0	15,261.00

Daily Swings (The Pivot Levels)							
Instrument	Trading Range						
	S3	S2	S1	Pivot	R1	R2	R3
Dow Jones	51,751.41	51,892.27	52,105.73	52,246.59	52,460.05	52,600.91	52,814.37
S & P 500	7,385.26	7,411.65	7,455.51	7,481.90	7,525.76	7,552.15	7,596.01
NASDAQ 100	29,358.77	29,563.26	29,919.81	30,124.30	30,480.84	30,685.34	31,041.88
Gold	3,814.04	3,893.52	3,970.41	4,049.89	4,126.78	4,206.26	4,283.15
Silver	53.74	55.68	57.64	59.58	61.54	63.48	65.44
Copper	5.91	6.00	6.08	6.16	6.24	6.33	6.41
Crude Oil	64.97	66.45	67.22	68.70	69.47	70.95	71.72
Platinum	1,464.49	1,502.12	1,544.39	1,582.0	1,624.29	1,661.92	1,704.19
Palladium	1,126.66	1,152.58	1,185.16	1,211.0	1,243.66	1,269.58	1,302.16
Natural Gas	3.10	3.15	3.18	3.22	3.25	3.30	3.33
Wheat	568.17	577.79	588.89	598.51	609.62	619.23	630.34
Cotton	74.62	75.53	76.68	77.59	78.74	79.65	80.80
Corn	428.60	431.99	437.12	440.51	445.64	449.03	454.17

Source: - News & Quotes (Reuters, Investing, Bloomberg, FXStreet, Barchart)

Disclaimer: This document has been prepared by IGI Finex Securities Limited and is for information purposes only. Whilst every effort has been made to ensure that all the information (including any recommendations or opinions expressed) contained in this document (the information) is not misleading or unreliable, IGI Finex Securities Limited makes no representation as to the accuracy or completeness of the information. Neither IGI Finex Securities Limited nor any director, officer or employee of IGI Finex Securities Limited shall in any manner be liable or responsible for any loss that may be occasioned as consequence of a party relying on the information. This document takes no account of the investment objectives, financial situation and particular needs of investors, who shall seek further professional advice before making any investment decision. This document and the information may not be reproduced, distributed or published by any recipient for any purpose.

Contact Details

Commodity Team

Zaeem Haider Khan	Head of Commodities	Tel: (+92-21) 35301405	zaeem.haider@igi.com.pk
Shakeel Ahmad	Branch Manager – Faisalabad	Tel: (+92-41) 2540843-45	shakeel.ahmad1@igi.com.pk
Ehsan Ul Haq	Trader – Lahore	Tel: (+92-42) 3830559-68	ehsan.haq@igi.com.pk
Dil Muhammad	Trader – Lahore	Tel: (+92-41) 2540843-45	dil.muhammad@igi.com.pk
Inamullah Shakir	Trader – Islamabad	Tel: (+92-21) 32429613-14	inam.ullah@igi.com.pk
Sheikh Muhammad Imran	Trader – Karachi	Tel: (+92-21) 35301684	imran.ahmed@igi.com.pk
Asif Saleem	Branch Manager – Rahim Yar Khan	Tel: (+92-68) 5871652-6	asif.saleem@igi.com.pk
Mahtab Ali	Branch Manager – Multan	Tel: (+92-61) 4512003	mahtab.ali@igi.com.pk

Research Team

Abdullah Farhan	Head of Research	Tel: (+92-21) 111-234-234 Ext: 912	abdullah.farhan@igi.com.pk
Sakina Makati	Research Analyst	Tel: (+92-21) 111-234-234 Ext: 810	sakina.makati@igi.com.pk
Syed Muzammil Hassan Rizvi	Research Analyst	Tel: (+92-21) 111-234-234 Ext: 569	muzammil.rizvi@igi.com.pk
Sufyan Siddiqui	Database Officer	Tel: (+92-21) 111-234-234 Ext: 888	sufyan.siddiqui@igi.com.pk

IGI Finex Securities Limited

Trading Rights Entitlement Certificate (TREC) Holder of Pakistan Stock Exchange Limited |
Corporate member of Pakistan Mercantile Exchange Limited
Website: www.igisecurities.com.pk

Head Office

Suite No 701-713, 7th Floor, The Forum, G-20,
Khayaban-e-Jami Block-09, Clifton, Karachi-75600
UAN: (+92-21) 111-444-001 | (+92-21) 111-234-234
Fax: (+92-21) 35309169, 35301780

Lahore Office

Shop # G-009, Ground Floor,
Packages Mall
Tel: (+92-42) 38303560-69
Fax: (+92-42) 38303559

Islamabad Office

3rd Floor, Kamran Centre,
Block- B, Jinnah Avenue, Blue Area
Tel: (+92-51) 2604861-2, 2604864,
2273439
Fax: (+92-51) 2273861

Faisalabad Office

Office No. 2, 5 & 8, Ground Floor, The
Regency International 949, The Mall
Faisalabad
Tel: (+92-41) 2540843-45

Rahim Yar Khan Office

Plot # 12, Basement of Khalid Market,
Model Town, Town Hall Road
Tel: (+92-68) 5871652-3
Fax: (+92-68) 5871651

Multan Office

Mezzanine Floor, Abdali Tower,
Abdali Road
Tel: (92-61) 4512003, 4571183