

Commodities and Indices Market View

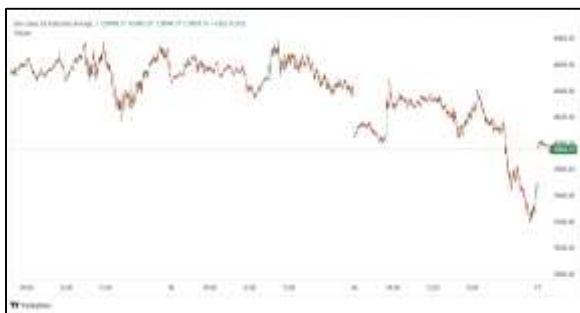
Wednesday, June 3, 2026



Technicals



S&P 500	RSI (20:80)	Sto Fast
	75.16	94.36% 94.27%



Dow Jones	RSI (20:80)	Sto Fast
	70.60	94.57% 97.21%

US Stock Market

DJIA	S&P 500	NASDAQ
51,307.79	7,609.78	27,093.90
+0.45%	+0.13%	+0.03%

The S&P 500 and the Dow closed modestly higher on Tuesday as risk appetite driven by AI fervor was counterbalanced by tensions arising from U.S.-Iran talks to reopen the Strait of Hormuz and end the months-long war.

The Dow Jones Industrial Average (.DJI), rose 228.91 points, or 0.45%, to 51,307.79, the S&P 500 (.SPX), gained 9.94 points, or 0.13%, to 7,609.90 and the Nasdaq Composite (.IXIC), gained 7.09 points, or 0.03%, to 27,093.90.

Advancing issues outnumbered decliners by a 1.52-to-1 ratio on the New York Stock Exchange. There were 571 new highs and 139 new lows on the NYSE.

On the Nasdaq, 2,280 stocks rose and 2,506 fell as declining issues outnumbered advancers by a 1.1-to-1 ratio.

The S&P 500 posted 29 new 52-week highs and 17 new lows while the Nasdaq Composite recorded 134 new highs and 96 new lows.

Volume on U.S. exchanges was 20.51 billion shares, compared with the 19.93 billion average for the full session over the last 20 trading days.

Major Economic Releases for Today

Period	Event	GMT	Forecast	Previous
JUNE	Core Harmonized Index of Consumer Prices (MoM)	2:00	--	0.90%
JUNE	Core Harmonized Index of Consumer Prices (YoY)	2:00	2.40%	2.20%
JUNE	Harmonized Index of Consumer Prices (MoM)	2:00	--	1.00%
JUNE	Harmonized Index of Consumer Prices (YoY)	2:00	3.30%	3.00%
JUNE	Real Retail Sales (YoY)	11:30	0.20%	0.50%

Dow Jones Industrial Average

At the close in NYSE, the Dow Jones Industrial Average added 0.45% to hit a new all time high. The best performers of the session on the Dow Jones Industrial Average were Cisco Systems Inc (NASDAQ:CSCO), which rose 5.50% or 6.67 points to trade at 128.00 at the close. Meanwhile, Caterpillar Inc (NYSE:CAT) added 5.16% or 44.61 points to end at 909.97 and Apple Inc (NASDAQ:AAPL) was up 2.91% or 8.91 points to 315.22 in late trade.

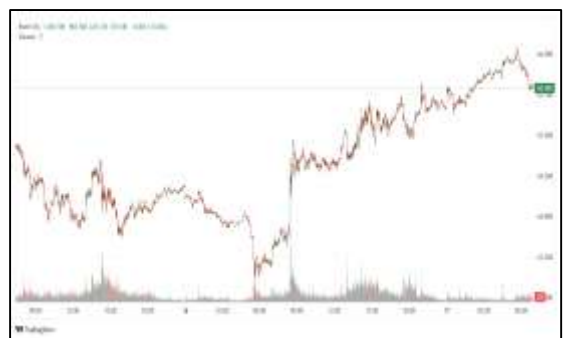


The worst performers of the session were Nike Inc (NYSE:NKE), which fell 4.79% or 2.20 points to trade at 43.73 at the close. Salesforce Inc (NYSE:CRM) declined 4.18% or 8.77 points to end at 200.83 and Microsoft Corporation (NASDAQ:MSFT) was down 4.18% or 19.23 points to 441.29.



NASDAQ 100

At the close in NYSE, the NASDAQ Composite index added 0.03%. The top performers on the NASDAQ Composite were Presurance Holdings Inc (NASDAQ:PRHI) which rose 678.99% to 5.71, Wing Yip Food Holdings Group Ltd ADR (NASDAQ:WYHG) which was up 351.16% to settle at 3.88 and Decent Holding Inc (NASDAQ:DXST) which gained 208.76% to close at 4.94.



The worst performers were Hitek Global (NASDAQ:HKIT) which was down 90.58% to 0.62 in late trade, Jianzhi Century Technology Group Co Ltd ADR (NASDAQ:JZ) which lost 77.42% to settle at 0.70 and Fulcrum Therapeutics Inc (NASDAQ:FULC) which was down 51.24% to 3.13 at the close.

OIL

Oil prices climbed more than 1% in early trade on Wednesday as hostilities in the Middle East erupted anew with Iran firing missiles at Kuwait and Bahrain, while diplomatic talks between Iran and the United States showed little progress.

Brent futures rose \$1.05, or 1.09%, at \$97.05 a barrel, while U.S. West Texas Intermediate (WTI) crude rose \$1.01, or 1.08%, to settle at \$94.77.



Precious and Base Metals

Gold prices held steady on Wednesday, as investors watched out for developments in the Middle East amid rising inflation fears and awaited upcoming US economic data.

Spot gold was unchanged at \$4,485.17 per ounce by 0319 GMT, after rising over 1% in the previous session. U.S. gold futures for August delivery slipped 0.1% to \$4,513.60.

Although gold is typically viewed as a hedge against inflation, it tends to lose its appeal as a non-yielding asset when in a high interest-rate environment.

Spot silver fell 0.1% to \$75.01 per ounce, platinum lost 0.2% to \$1,933.15, while palladium gained 0.2% to \$1,372.25.



Traditional Agricultures

Soybeans posted losses of as little as 4 cents in the deferreds, with nearbys own as much as 16 cents. The cmdtyView national average Cash Bean price was down 15 3/4 cents at \$11.06 3/4.

Corn futures closed the Tuesday session with the weakness continuing, as contracts were down 2 1/2 to 6 cents across the board, led by the new crop months. The CmdtyView national average Cash Corn price was down 3 1/4 cents at \$4.04 1/2.

The wheat complex posted Tuesday losses across all three exchanges at the close. Chicago SRW futures were 1 1/4 to 5 3/4 cents lower at the close. KC HRW futures were 5 3/4 to 12 1/4 cents in the red on the day. MPLS spring wheat was down 7 to 15 cents on Tuesday.



Future Settlement Price Wednesday, June 03rd, 2026

Instrument	Last	Net Change	High	Low	Volume
S & P 500	7,623.00	-0.75	7,628.50	7,602.00	60,522.00
NASDAQ 100	30,702.25	-10.50	30,757.00	30,561.25	53,233.00
Dow Jones	51,377.00	-23.00	51,418.00	51,273.00	5,360.00
Gold	4,512.00	-7.90	4,525.10	4,490.50	20,897.00
Silver	75.38	-0.18	75.63	74.11	4,420.00
Copper	6.68	0.12	6.70	6.53	43,410.00
Crude Oil	94.78	1.02	96.08	93.45	24,055.00
Platinum	1,943.30	14.90	1,988.20	1,929.60	14,911.00
Palladium	1,392.40	9.80	1,420.00	1,376.00	3,262.00
Natural Gas	3.16	0.00	3.18	3.16	1,734.00
Wheat	599-0	-4.00	603-0	598-4	5,386.00
Soy Beans	1168-0	-4.00	1169-2	1161-4	9,913.00
Corn	439-2	-3.00	441-4	439-2	7,717.00

Daily Swings (The Pivot Levels)

Instrument	Trading Range						
	S3	S2	S1	Pivot	R1	R2	R3
Dow Jones	50,449.98	50,608.65	50,843.76	51,002.43	51,237.54	51,396.21	51,631.32
S & P 500	7,514.11	7,538.36	7,569.16	7,593.41	7,624.21	7,648.46	7,679.26
NASDAQ 100	29,899.84	30,070.52	30,292.19	30,462.87	30,684.54	30,855.22	31,076.90
Gold	4,391.38	4,440.99	4,471.95	4,521.56	4,552.52	4,602.13	4,633.09
Silver	71.20	72.88	73.99	75.67	76.78	78.46	79.57
Copper	6.39	6.46	6.56	6.63	6.73	6.80	6.90
Crude Oil	85.29	87.73	91.16	93.60	97.03	99.47	102.90
Platinum	1,850.89	1,888.57	1,912.29	1,949.9	1,973.69	2,011.37	2,035.09
Palladium	1,326.16	1,350.83	1,370.66	1,395.3	1,415.16	1,439.83	1,459.66
Natural Gas	2.97	3.04	3.10	3.17	3.23	3.29	3.36
Wheat	588.94	594.27	598.64	603.97	608.34	613.67	618.04
Cotton	77.82	78.78	79.66	80.62	81.50	82.46	83.34
Corn	431.80	435.45	438.10	441.75	444.40	448.05	450.70

Source: - News & Quotes (Reuters, Investing, Bloomberg, FXStreet, Barchart)

Disclaimer: This document has been prepared by IGI Finex Securities Limited and is for information purposes only. Whilst every effort has been made to ensure that all the information (including any recommendations or opinions expressed) contained in this document (the information) is not misleading or unreliable, IGI Finex Securities Limited makes no representation as to the accuracy or completeness of the information. Neither IGI Finex Securities Limited nor any director, officer or employee of IGI Finex Securities Limited shall in any manner be liable or responsible for any loss that may be occasioned as consequence of a party relying on the information. This document takes no account of the investment objectives, financial situation and particular needs of investors, who shall seek further professional advice before making any investment decision. This document and the information may not be reproduced, distributed or published by any recipient for any purpose.

Contact Details

Commodity Team

Zaeem Haider Khan	Head of Commodities	Tel: (+92-21) 35301405	zaeem.haider@igi.com.pk
Shakeel Ahmad	Branch Manager – Faisalabad	Tel: (+92-41) 2540843-45	shakeel.ahmad1@igi.com.pk
Ehsan Ul Haq	Trader – Lahore	Tel: (+92-42) 3830559-68	ehsan.haq@igi.com.pk
Dil Muhammad	Trader – Lahore	Tel: (+92-41) 2540843-45	dil.muhammad@igi.com.pk
Inamullah Shakir	Trader – Islamabad	Tel: (+92-21) 32429613-14	inam.ullah@igi.com.pk
Sheikh Muhammad Imran	Trader – Karachi	Tel: (+92-21) 35301684	imran.ahmed@igi.com.pk
Asif Saleem	Branch Manager – Rahim Yar Khan	Tel: (+92-68) 5871652-6	asif.saleem@igi.com.pk
Mahtab Ali	Branch Manager – Multan	Tel: (+92-61) 4512003	mahtab.ali@igi.com.pk

Research Team

Abdullah Farhan	Head of Research	Tel: (+92-21) 111-234-234 Ext: 912	abdullah.farhan@igi.com.pk
Sakina Makati	Research Analyst	Tel: (+92-21) 111-234-234 Ext: 810	sakina.makati@igi.com.pk
Syed Muzammil Hassan Rizvi	Research Analyst	Tel: (+92-21) 111-234-234 Ext: 569	muzammil.rizvi@igi.com.pk
Sufyan Siddiqui	Database Officer	Tel: (+92-21) 111-234-234 Ext: 888	sufyan.siddiqui@igi.com.pk

IGI Finex Securities Limited

Trading Rights Entitlement Certificate (TREC) Holder of Pakistan Stock Exchange Limited |
Corporate member of Pakistan Mercantile Exchange Limited
Website: www.igisecurities.com.pk

Head Office

Suite No 701-713, 7th Floor, The Forum, G-20,
Khayaban-e-Jami Block-09, Clifton, Karachi-75600
UAN: (+92-21) 111-444-001 | (+92-21) 111-234-234
Fax: (+92-21) 35309169, 35301780

Lahore Office

Shop # G-009, Ground Floor,
Packages Mall
Tel: (+92-42) 38303560-69
Fax: (+92-42) 38303559

Islamabad Office

3rd Floor, Kamran Centre,
Block- B, Jinnah Avenue, Blue Area
Tel: (+92-51) 2604861-2, 2604864,
2273439
Fax: (+92-51) 2273861

Faisalabad Office

Office No. 2, 5 & 8, Ground Floor, The
Regency International 949, The Mall
Faisalabad
Tel: (+92-41) 2540843-45

Rahim Yar Khan Office

Plot # 12, Basement of Khalid Market,
Model Town, Town Hall Road
Tel: (+92-68) 5871652-3
Fax: (+92-68) 5871651

Multan Office

Mezzanine Floor, Abdali Tower,
Abdali Road
Tel: (92-61) 4512003, 4571183