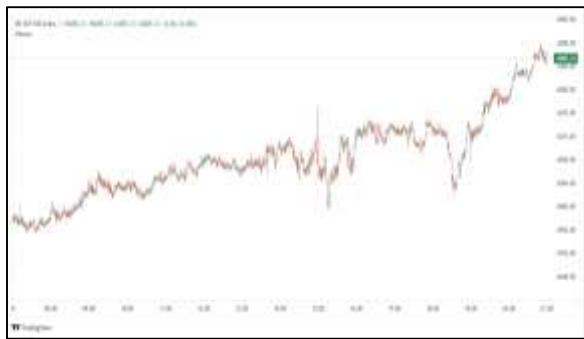


Commodities and Indices Market View

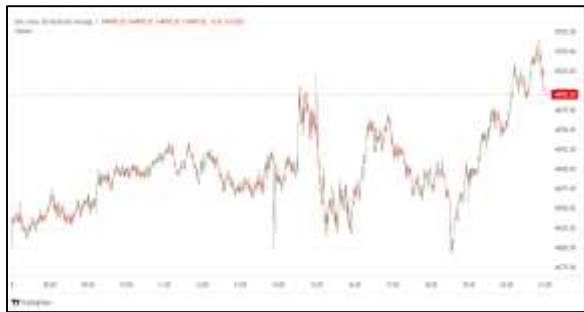
Thursday, December 5, 2024



Technicals



S&P 500	RSI (20:80)	Sto Fast
	70.05%	D 95.27% K 97.84%



Dow Jones	RSI (20:80)	Sto Fast
	68.34%	D 88.17% K 88.83%

US Stock Market

DJIA	S&P 500	NASDAQ
45,014.04	6,086.49	19,735.12
+0.69%	+0.61%	+1.30%

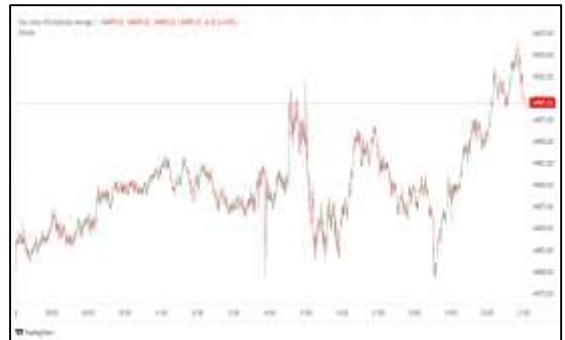
All three major U.S. stock indexes scored record closing highs on Wednesday as technology shares rallied after upbeat results from Salesforce and as comments by Federal Reserve Chair Jerome Powell gave a late boost to the market. Salesforce (CRM.N), jumped 11% and hit an all-time high after the enterprise cloud company beat analyst estimates for third-quarter revenue and raised the lower end of its annual revenue forecast. Other cloud companies also advanced. The S&P 500 technology index (.SPLRCT), hit a record closing high, along with the communication services (.SPLRCL), and consumer discretionary (.SPLRCD) indexes. Also in the tech space, Marvell Technology (MRVL.O), rallied 23.2% and also hit a record high after the chipmaker forecast fourth-quarter revenue above analyst estimates. An index of semiconductors (.SOX), rose 1.7%, while Nvidia (NVDA.O), was up 3.5%. The Dow Jones Industrial Average (.DJI), rose 308.91 points, or 0.69%, to 45,014.44, the S&P 500 (.SPX), gained 36.59 points, or 0.60%, to 6,086.47 and the Nasdaq Composite (.IXIC), gained 254.21 points, or 1.30%, to 19,735.12.

Major Economic Releases for Today

Period	Event	GMT	Forecast	Previous
NOV	EUR Gross Domestic Product s.a. (QoQ) (Q3)	22:00	0.4%	0.4%
NOV	EUR Gross Domestic Product s.a. (YoY) (Q3)	22:00	0.9%	0.9%
NOV	CAD Ivey Purchasing Managers Index	3:00	-	52.20
NOV	USD Initial Jobless Claims	1:30	215k	213k
OCT	EUR Industrial Production s.a. (MoM)	19:00	1.2%	-2.5%

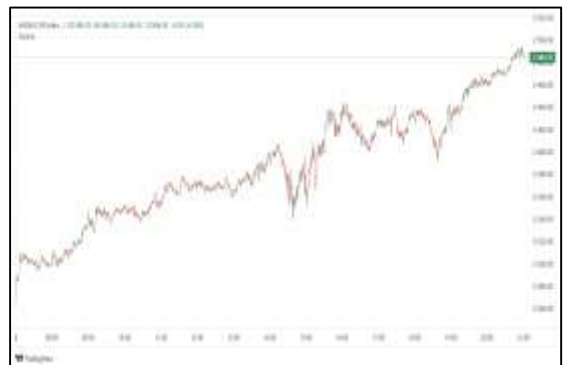
Dow Jones Industrial Average

At the close in NYSE, the Dow Jones Industrial Average gained 0.69% to hit a new all time high. The best performers of the session on the Dow Jones Industrial Average were Salesforce Inc (NYSE:CRM), which rose 11.05% or 36.62 points to trade at 368.05 at the close. Meanwhile, NVIDIA Corporation (NASDAQ:NVDA) added 3.48% or 4.88 points to end at 145.14 and Amazon.com Inc (NASDAQ:AMZN) was up 2.21% or 4.72 points to 218.16 in late trade. The worst performers of the session were Verizon Communications Inc (NYSE:VZ), which fell 2.98% or 1.30 points to trade at 42.53 at the close. Chevron Corp (NYSE:CVX) declined 2.22% or 3.60 points to end at 158.32 and Coca-Cola Co (NYSE:KO) was down 2.06% or 1.31 points to 62.21.



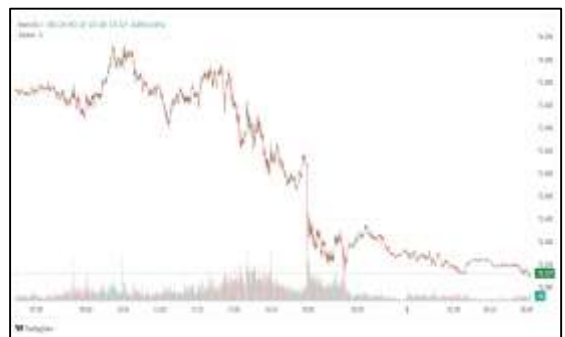
NASDAQ 100

At the close in NYSE, the NASDAQ Composite index gained 1.29%. The top performers on the NASDAQ Composite were Cyclarion Therapeutics Inc (NASDAQ:CYCN) which rose 294.41% to 6.35, Bluebird bio Inc (NASDAQ:BLUE) which was up 105.02% to settle at 0.74 and SMX Security Matters Ord Shs Class A (NASDAQ:SMX) which gained 96.97% to close at 0.38. The worst performers were Relmada Therapeutics Inc (NASDAQ:RLMD) which was down 77.26% to 0.63 in late trade, Mawson Infrastructure Group Inc (NASDAQ:MIGI) which lost 64.39% to settle at 0.68 and Oriental Rise Holdings Ltd (NASDAQ:ORIS) which was down 32.97% to 8.01 at the close.



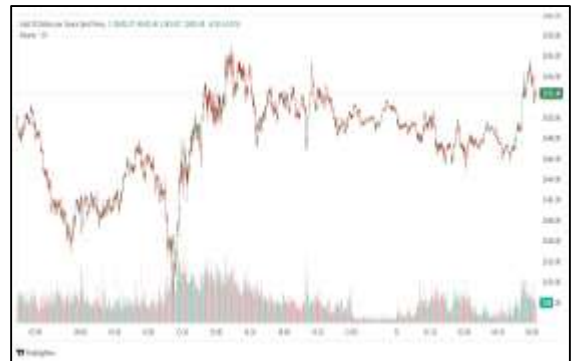
OIL

Oil prices were mostly stable on Thursday ahead of an OPEC+ meeting later in the day, with investors waiting to see what the producer group would do next on supply cuts while also monitoring geopolitical tension in the Middle East. Brent crude futures rose 6 cents, or 0.08%, to \$72.37 a barrel by 0400 GMT, while U.S. crude futures were at \$68.61 a barrel, up 7 cents, or 0.10%. Both benchmarks fell nearly 2% on Wednesday. A single bank sold a large volume of U.S. oil futures contracts in early afternoon trading on Wednesday, a person with direct knowledge of the matter said, pushing prices down.



Precious and Base Metals

Gold prices were little changed on Thursday as investors awaited U.S. payrolls data that is expected to provide more insights into the Federal Reserve's monetary policy path. Spot gold was nearly unchanged at \$2,647.17 per ounce, as of 0326 GMT. U.S. gold futures eased 0.2% to \$2,671.10. Gold prices probably will stay around these levels with a downward bias at least until (the end of) December. Markets currently see a 73.8 % chance of a 25-basis-point rate cut this month and an 85 bps reduction by the end of 2025, according to the CME Group's FedWatch Tool. Spot silver fell 0.3% to \$31.21 per ounce, platinum steadied at \$941.58 and palladium was flat at \$977.31.



Traditional Agricultures

Soybeans rounded out the midweek session with contracts closing 7 to 8 cents in the red. CmdtyView's national front month Cash Bean price is back down 8 cents at \$9.35 3/4. Soy meal futures were \$1.50 to \$2/ton higher. Soy Oil futures were down 72 to 77 points on the session. The wheat complex closed out the Wednesday session mixed across the three exchanges. Chicago SRW futures were fractionally to 1 1/4 cents higher in the front months. KC HRW contracts were up fractionally, with December 3 cents higher at the close. MPLS spring wheat posted fractional losses across most contracts on the day. Corn slid lower on Wednesday, as contracts closed with losses of 1 to 2 1/2 cents in the nearby contracts on the day. The national average Cash Corn price from cmdtyView was down 2 cents at \$4.03 1/2.



Future Settlement Price Thursday, December 5th, 2024					
Instrument	Last	Net Change	High	Low	Volume
S & P 500	6,095.00	-3.5	6,096.75	6,091.00	27,354.00
NASDAQ 100	21,514.75	-21.75	21,523.75	21,495.50	16,872.00
Dow Jones	45,100.00	-6	45,119.00	45,078.00	2,746.00
Gold	2,672.90	-3.3	2,675.30	2,668.30	13,138.00
Silver	31.81	-0.11	31.95	31.67	5,983.00
Copper	4.19	-0.0135	4.20	4.17	5,196.00
Crude Oil	68.55	0.01	68.83	68.47	9,893.00
Platinum	950.50	-2.8	953.70	947.60	2,214.00
Palladium	988.00	-6.1	992.00	986.00	127.00
Natural Gas	3.07	0.029	3.08	3.04	5,186.00
Wheat	548-2	-3	548-6	545-6	1,185.00
Soy Beans	987-0	1	987-2	982-2	5,156.00
Corn	428-4	-5	429-6	428-2	9,481.00

Daily Swings (The Pivot Levels)							
			Trading Range				
Instrument	S3	S2	S1	Pivot	R1	R2	R3
Dow Jones	44,208.74	44,391.76	44,548.64	44,952.00	44,888.54	45,071.56	45,228.44
S & P 500	6,019.47	6,026.43	6,038.15	6,055.84	6,056.83	6,063.79	6,075.51
NASDAQ 100	20,974.83	21,028.32	21,128.81	21,112.6	21,282.80	21,336.28	21,436.78
Gold	2,631.80	2,643.00	2,659.60	2,667.37	2,687.40	2,698.60	2,715.20
Silver	30.25	30.66	31.25	31.32	32.26	32.67	33.27
Copper	4.13	4.15	4.17	4.19	4.22	4.24	4.26
Crude Oil	65.98	67.24	68.00	69.39	70.02	71.28	72.04
Platinum	914.25	924.90	936.95	955.40	959.65	970.30	982.35
Palladium	933.64	949.82	969.92	988.35	1,006.20	1,022.38	1,042.48
Natural Gas	2.87	2.93	2.98	3.10	3.10	3.15	3.21
Wheat	532.46	536.42	541.83	550.50	551.20	555.16	560.57
Cotton	69.85	70.37	70.81	71.28	71.77	72.29	72.73
Corn	424.64	427.12	428.44	433.26	432.24	434.72	436.04

Source: - News & Quotes (Reuters, Investing, Bloomberg, FXStreet, Barchart)

Disclaimer: This document has been prepared by IGI Finex Securities Limited and is for information purposes only. Whilst every effort has been made to ensure that all the information (including any recommendations or opinions expressed) contained in this document (the information) is not misleading or unreliable, IGI Finex Securities Limited makes no representation as to the accuracy or completeness of the information. Neither IGI Finex Securities Limited nor any director, officer or employee of IGI Finex Securities Limited shall in any manner be liable or responsible for any loss that may be occasioned as consequence of a party relying on the information. This document takes no account of the investment objectives, financial situation and particular needs of investors, who shall seek further professional advice before making any investment decision. This document and the information may not be reproduced, distributed or published by any recipient for any purpose.

Contact Details

Commodity Team

Zaeem Haider Khan	Head of Commodities	Tel: (+92-21) 35301405	zaeem.haider@igi.com.pk
Shakeel Ahmad	Branch Manager – Faisalabad	Tel: (+92-41) 2540843-45	shakeel.ahmad1@igi.com.pk
Ehsan Ul Haq	Trader – Lahore	Tel: (+92-42) 3830559-68	ehsan.haq@igi.com.pk
Dil Muhammad	Trader- Lahore	Tel: (+92-41) 2540843-45	dil.muhammad@igi.com.pk
Inamullah Shakir	Trader – Islamabad	Tel: (+92-21) 32429613-14	inam.ullah@igi.com.pk
Sheikh Muhammad Imran	Trader – Karachi	Tel: (+92-21) 35301684	imran.ahmed@igi.com.pk
Asif Saleem	Branch Manager– Rahim Yar Khan	Tel: (+92-68) 5871652-6	asif.saleem@igi.com.pk
Mahtab Ali	Branch Manager- Multan	Tel: (+92-61) 4512003	mahtab.ali@igi.com.pk

Research Team

Abdullah Farhan	Head of Research	Tel: (+92-21) 111-234-234 Ext: 912	abdullah.farhan@igi.com.pk
Sakina Makati	Research Analyst	Tel: (+92-21) 111-234-234 Ext: 810	sakina.makati@igi.com.pk
Laraib Nisar	Research Analyst	Tel: (+92-21) 111-234-234 Ext: 974	laraib.nisar@igi.com.pk

IGI Finex Securities Limited

Trading Rights Entitlement Certificate (TREC) Holder of Pakistan Stock Exchange Limited |

Corporate member of Pakistan Mercantile Exchange Limited

Website: www.igisecurities.com.pk

Head Office

Suite No 701-713, 7th Floor, The Forum, G-20,
Khayaban-e-Jami Block-09, Clifton, Karachi-75600

UAN: (+92-21) 111-444-001 | (+92-21) 111-234-234

Fax: (+92-21) 35309169, 35301780

Lahore Office

Shop # G-009, Ground Floor,
Packages Mall

Tel: (+92-42) 38303560-69

Fax: (+92-42) 38303559

Islamabad Office

3rd Floor, Kamran Centre,
Block- B, Jinnah Avenue, Blue Area
Tel: (+92-51) 2604861-2, 2604864,
2273439

Fax: (+92-51) 2273861

Faisalabad Office

Office No. 2, 5 & 8, Ground Floor, The
Regency International 949, The Mall
Faisalabad

Tel: (+92-41) 2540843-45

Rahim Yar Khan Office

Plot # 12, Basement of Khalid Market,
Model Town, Town Hall Road

Tel: (+92-68) 5871652-3

Fax: (+92-68) 5871651

Multan Office

Mezzanine Floor, Abdali Tower,
Abdali Road

Tel: (92-61) 4512003, 4571183

IGI Finex Securities Limited

© Copyright 2024 IGI Finex Securities Limited