

Commodities and Indices Market View

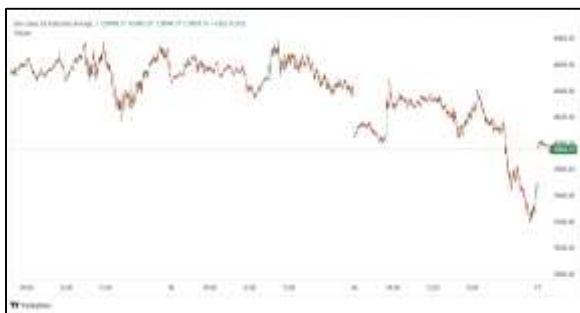
Wednesday, May 6, 2026



Technicals



S&P 500	RSI (20:80)	Sto Fast
	71.23	88.56% 86.55%



Dow Jones	RSI (20:80)	Sto Fast
	59.40	86.72% 86.37%

US Stock Market

DJIA	S&P 500	NASDAQ
49,298.25	7,259.22	25,326.13
+0.73%	+0.81%	+1.03%

The S&P 500 and Nasdaq notched record high closes on Tuesday, lifted by Intel and other AI-related stocks, as a U.S.-Iran ceasefire held firm and investors focused on strong quarterly earnings.

The S&P 500 climbed 0.81% to end the session at 7,259.22 points. The Nasdaq gained 1.03% to 25,326.13 points, while the Dow Jones Industrial Average rose 0.73% to 49,298.25 points.

All 11 S&P 500 sector indexes rose, led by materials (.SPLRCM), up 1.67%, followed by a 1.63% gain in information technology (.SPLRCT).

Advancing issues outnumbered falling ones within the S&P 500 (.AD.SPX), by a 1.7-to-one ratio.

The S&P 500 posted 43 new highs and 23 new lows; the Nasdaq recorded 160 new highs and 79 new lows.

Volume on U.S. exchanges was relatively light, with 16.1 billion shares traded, compared to an average of 17.7 billion shares over the previous 20 sessions.

Major Economic Releases for Today

Period	Event	GMT	Forecast	Previous
MAY	Exports (MoM)	6:30	--	4.90%
MAY	Imports (MoM)	6:30	--	-3.20%
MAY	Factory Orders n.s.a. (YoY)	11:00	--	3.50%
MAY	Factory Orders s.a. (MoM)	11:00	1.00%	0.90%
MAY	Unit Labor Costs (Q1)	5:30	--	4.40%

Dow Jones Industrial Average

At the close in NYSE, the Dow Jones Industrial Average added 0.73%. The best performers of the session on the Dow Jones Industrial Average were Caterpillar Inc (NYSE:CAT), which rose 3.41% or 29.81 points to trade at 904.59 at the close. Meanwhile, Apple Inc (NASDAQ:AAPL) added 2.66% or 7.35 points to end at 284.18 and Cisco Systems Inc (NASDAQ:CSCO) was up 1.80% or 1.67 points to 94.30 in late trade.

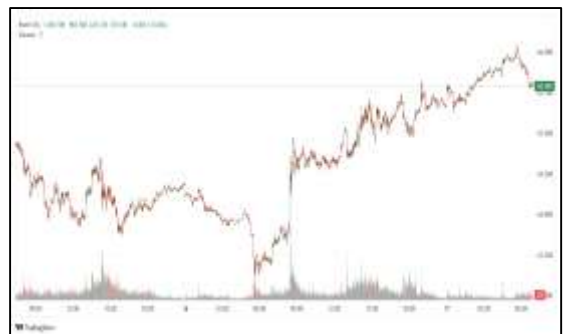


The worst performers of the session were Unitedhealth Group (NYSE:UNH), which fell 1.86% or 6.88 points to trade at 363.87 at the close. Visa Inc Class A (NYSE:V) declined 1.47% or 4.82 points to end at 322.03 and American Express Company (NYSE:AXP) was down 1.02% or 3.26 points to 315.95.



NASDAQ 100

At the close in NYSE, the NASDAQ Composite index climbed 1.03%. The top performers on the NASDAQ Composite were Phoenix Asia Holdings Ltd (NASDAQ:PHOE) which rose 166.38% to 46.99, Sadot Group Inc (NASDAQ:SDOT) which was up 86.56% to settle at 0.48 and Backblaze Inc (NASDAQ:BLZE) which gained 63.58% to close at 7.59.



The worst performers were Embecta Corp (NASDAQ:EMBC) which was down 57.84% to 3.90 in late trade, SKK Holdings Ltd (NASDAQ:SKK) which lost 54.39% to settle at 5.56 and GeneDx Holdings Corp (NASDAQ:WGS) which was down 49.09% to 34.58 at the close.

OIL

Oil prices fell for a second day on Wednesday on expectations bottled up supply from the key Middle East producing region could resume flowing after U.S. President Donald Trump indicated a possible peace deal may be reached to end the war with Iran.



Brent crude futures for July fell \$1.52, or 1.38%, to \$108.35 per barrel as of 0103 GMT, after dropping 4% in the previous session. U.S. benchmark West Texas Intermediate futures for June declined \$1.50, or 1.47%, to \$100.77, after closing down 3.9% the day before.

Precious and Base Metals

Gold prices rose more than 1% on Wednesday, buoyed by a weaker dollar, while softer oil prices eased fears of inflation and higher-for-longer interest rates, amid hopes of a U.S.-Iran peace deal.

Spot gold was up 1.7% at \$4,633.31 per ounce, as of 0225 GMT. U.S. gold futures for June delivery rose 1.7% to \$4,643.20.

While gold is considered an inflation hedge, high interest rates make yield-bearing assets more attractive, weighing on its appeal.

Spot silver rose 2.7% to \$74.80 per ounce, platinum gained 1.7% to \$1,986.25, and palladium was up 2.1% at \$1,516.44.



Traditional Agricultures

Soybeans were 2 ¾ to 11 ¾ cents in the red on Tuesday, with the nearbys leading the charge. The cmdtyView national average Cash Bean price was down 11 1/4 cents at \$11.43.

Corn futures closed the Tuesday session with deferred contracts fractionally lower to down 5 2/4 cents in the nearbys. In delivery May was down 8 ¼ cents. The CmdtyView national average Cash Corn price was 6 cents lower on the day to \$4.38.

The wheat complex posted losses across three markets on Tuesday. Chicago SRW futures were 8 to 13 ¼ cents in the red at the close. KC HRW futures were down 3 to 5 3/4 cents on Tuesday. MPLS spring wheat was 3 to 4 1/2 cents lower at the final bell.



Future Settlement Price Wednesday, May 06th, 2026

Instrument	Last	Net Change	High	Low	Volume
S & P 500	7,307.00	19.75	7,320.00	7,293.50	70,906.00
NASDAQ 100	28,317.00	181.00	28,422.00	28,243.00	58,634.00
Dow Jones	49,512.00	97.00	49,571.00	49,350.00	7,176.00
Gold	4,655.90	87.40	4,662.00	4,556.10	26,497.00
Silver	76.09	2.51	76.20	73.05	7,127.00
Copper	5.99	0.15	6.02	5.86	30,677.00
Crude Oil	100.73	-1.54	102.70	99.12	28,327.00
Platinum	1,975.30	13.80	2,006.20	1,953.00	7,030.00
Palladium	1,513.70	32.20	1,534.00	1,491.50	3,069.00
Natural Gas	2.78	-0.01	2.79	2.76	2,306.00
Wheat	624-6	-3.00	628-2	623-0	4,565.00
Soy Beans	1210-6	-6.00	1214-6	1208-4	9,871.00
Corn	477-4	-6.00	479-4	477-2	7,408.00

Daily Swings (The Pivot Levels)

Instrument	Trading Range						
	S3	S2	S1	Pivot	R1	R2	R3
Dow Jones	48,227.80	48,570.43	48,756.17	49,098.80	49,284.54	49,627.17	49,812.91
S & P 500	7,097.98	7,136.05	7,168.40	7,206.47	7,238.82	7,276.89	7,309.24
NASDAQ 100	27,178.21	27,341.15	27,496.49	27,659.43	27,814.77	27,977.71	28,133.04
Gold	4,466.10	4,494.48	4,549.44	4,577.82	4,632.78	4,661.16	4,716.12
Silver	71.39	72.10	73.22	73.93	75.05	75.76	76.88
Copper	5.74	5.80	5.90	5.96	6.06	6.12	6.22
Crude Oil	91.39	95.29	97.54	101.44	103.69	107.59	109.84
Platinum	1,910.21	1,932.98	1,960.51	1,983.2	2,010.81	2,033.58	2,061.11
Palladium	1,455.59	1,473.92	1,497.59	1,515.9	1,539.59	1,557.92	1,581.59
Natural Gas	2.62	2.69	2.73	2.80	2.84	2.91	2.95
Wheat	591.49	607.79	617.52	633.82	643.54	659.85	669.57
Cotton	81.49	82.19	83.50	84.20	85.51	86.21	87.52
Corn	464.42	470.90	474.44	480.92	484.47	490.94	494.49

Source: - News & Quotes (Reuters, Investing, Bloomberg, FXStreet, Barchart)

Disclaimer: This document has been prepared by IGI Finex Securities Limited and is for information purposes only. Whilst every effort has been made to ensure that all the information (including any recommendations or opinions expressed) contained in this document (the information) is not misleading or unreliable, IGI Finex Securities Limited makes no representation as to the accuracy or completeness of the information. Neither IGI Finex Securities Limited nor any director, officer or employee of IGI Finex Securities Limited shall in any manner be liable or responsible for any loss that may be occasioned as consequence of a party relying on the information. This document takes no account of the investment objectives, financial situation and particular needs of investors, who shall seek further professional advice before making any investment decision. This document and the information may not be reproduced, distributed or published by any recipient for any purpose.

Contact Details

Commodity Team

Zaeem Haider Khan	Head of Commodities	Tel: (+92-21) 35301405	zaeem.haider@igi.com.pk
Shakeel Ahmad	Branch Manager – Faisalabad	Tel: (+92-41) 2540843-45	shakeel.ahmad1@igi.com.pk
Ehsan Ul Haq	Trader – Lahore	Tel: (+92-42) 3830559-68	ehsan.haq@igi.com.pk
Dil Muhammad	Trader – Lahore	Tel: (+92-41) 2540843-45	dil.muhammad@igi.com.pk
Inamullah Shakir	Trader – Islamabad	Tel: (+92-21) 32429613-14	inam.ullah@igi.com.pk
Sheikh Muhammad Imran	Trader – Karachi	Tel: (+92-21) 35301684	imran.ahmed@igi.com.pk
Asif Saleem	Branch Manager – Rahim Yar Khan	Tel: (+92-68) 5871652-6	asif.saleem@igi.com.pk
Mahtab Ali	Branch Manager – Multan	Tel: (+92-61) 4512003	mahtab.ali@igi.com.pk

Research Team

Abdullah Farhan	Head of Research	Tel: (+92-21) 111-234-234 Ext: 912	abdullah.farhan@igi.com.pk
Sakina Makati	Research Analyst	Tel: (+92-21) 111-234-234 Ext: 810	sakina.makati@igi.com.pk
Syed Muzammil Hassan Rizvi	Research Analyst	Tel: (+92-21) 111-234-234 Ext: 569	muzammil.rizvi@igi.com.pk
Sufyan Siddiqui	Database Officer	Tel: (+92-21) 111-234-234 Ext: 888	sufyan.siddiqui@igi.com.pk

IGI Finex Securities Limited

Trading Rights Entitlement Certificate (TREC) Holder of Pakistan Stock Exchange Limited |
Corporate member of Pakistan Mercantile Exchange Limited
Website: www.igisecurities.com.pk

Head Office

Suite No 701-713, 7th Floor, The Forum, G-20,
Khayaban-e-Jami Block-09, Clifton, Karachi-75600
UAN: (+92-21) 111-444-001 | (+92-21) 111-234-234
Fax: (+92-21) 35309169, 35301780

Lahore Office

Shop # G-009, Ground Floor,
Packages Mall
Tel: (+92-42) 38303560-69
Fax: (+92-42) 38303559

Islamabad Office

3rd Floor, Kamran Centre,
Block- B, Jinnah Avenue, Blue Area
Tel: (+92-51) 2604861-2, 2604864,
2273439
Fax: (+92-51) 2273861

Faisalabad Office

Office No. 2, 5 & 8, Ground Floor, The
Regency International 949, The Mall
Faisalabad
Tel: (+92-41) 2540843-45

Rahim Yar Khan Office

Plot # 12, Basement of Khalid Market,
Model Town, Town Hall Road
Tel: (+92-68) 5871652-3
Fax: (+92-68) 5871651

Multan Office

Mezzanine Floor, Abdali Tower,
Abdali Road
Tel: (92-61) 4512003, 4571183