

Commodities and Indices Market View

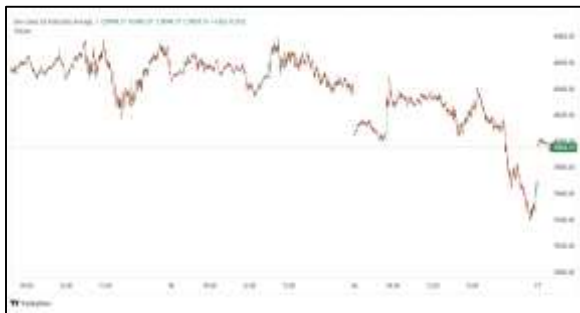
Tuesday, July 7, 2026



Technicals



S&P 500	RSI (20:80)	Sto Fast
	58.81	70.90% 76.50%



Dow Jones	RSI (20:80)	Sto Fast
	71.38	95.00% 99.80%

US Stock Market

DJIA	S&P 500	NASDAQ
53,055.91	7,537.43	26,121.16
+0.29%	+0.72%	+1.12%

The S&P 500 and Nasdaq ended sharply higher on Monday, with Broadcom and other chip stocks rallying as investors bought shares in companies related to artificial intelligence that are expected to drive a strong second-quarter earnings season.

The S&P 500 climbed 0.72% to end the session at 7,537.43 points. The Nasdaq gained 1.12% to 26,121.16 points, while the Dow Jones Industrial Average rose 0.29% to 53,055.91 points.

Even though the S&P 500 rose, declining stocks outnumbered rising ones within the index (.AD.SPX), by a 1.3-to-one ratio.

Following Monday's gains, the S&P 500 is up about 10% in 2026, and it remains down about 1% from its record high close on June 2.

Volume on U.S. exchanges was relatively light, with 16.8 billion shares traded, compared to an average of 23.4 billion shares over the previous 20 sessions.

Major Economic Releases for Today

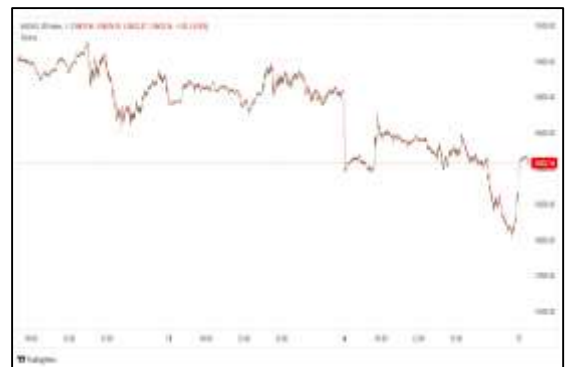
Period	Event	GMT	Forecast	Previous
JULY	Consumer Price Index (MoM)	6:30	-0.20%	-0.10%
JULY	Consumer Price Index (YoY)	6:30	1.10%	1.20%
JULY	Producer Price Index (YoY)	6:30	4.20%	3.90%
JULY	RBNZ Interest Rate Decision	7:00	2.50%	2.25%
JULY	Industrial Production s.a. (MoM)	11:00	0.20%	0.40%

Dow Jones Industrial Average

At the close in NYSE, the Dow Jones Industrial Average added 0.30% to hit a new all time high. The best performers of the session on the Dow Jones Industrial Average were Boeing Co (NYSE:BA), which rose 3.55% or 8.05 points to trade at 234.54 at the close. Meanwhile, International Business Machines (NYSE:IBM) added 3.45% or 10.00 points to end at 299.52 and Goldman Sachs Group Inc (NYSE:GS) was up 3.36% or 34.29 points to 1,055.29 in late trade.



The worst performers of the session were Merck & Company Inc (NYSE:MRK), which fell 2.13% or 2.76 points to trade at 126.80 at the close. Walt Disney Company (NYSE:DIS) declined 2.10% or 2.09 points to end at 97.41 and Amgen Inc (NASDAQ:AMGN) was down 2.06% or 7.70 points to 366.45.



NASDAQ 100

At the close in NYSE, the NASDAQ Composite index added 1.12%. The top performers on the NASDAQ Composite were Lianhe Sowell Int Group (NASDAQ:LHSW) which rose 277.77% to 6.80, Utime Ltd (NASDAQ:FXHO) which was up 171.53% to settle at 19.55 and Zhongchao Inc (NASDAQ:ZCMD) which gained 101.80% to close at 2.24.



The worst performers were Ree Automotive Holding Inc (NASDAQ:REE) which was down 63.35% to 0.08 in late trade, Alarum Technologies Ltd (NASDAQ:ALAR) which lost 51.65% to settle at 3.07 and Julong Holding Ltd (NASDAQ:JLHL) which was down 48.89% to 3.69 at the close.

OIL

Oil prices edged higher on Tuesday, but gains were limited as traders looked beyond easing geopolitical tensions in the Middle East and turned their attention to supply increases and demand prospects.



Brent crude futures gained 28 cents, or 0.39%, to \$72.29, and U.S. West Texas Intermediate crude rose to \$68.84 a barrel, up 29 cents, or 0.26% as of 0046 GMT.

Precious and Base Metals

Gold prices eased on Tuesday, trading below a two-week high, with investors awaiting the U.S. Federal Reserve's June meeting minutes for insight into new Chair Kevin Warsh's monetary policy direction.

Spot gold fell 0.6% to \$4,138.32 per ounce by 0232 GMT, while U.S. gold futures for August delivery eased 0.4% to \$4,149.90.



Lower interest rates tend to be favourable to gold, as it is a non-yielding asset.

Elsewhere, spot silver slipped 1% to \$61.48 per ounce.



Platinum eased 0.1% to \$1,629.46, while palladium rose 0.4% to \$1,272.85.

Traditional Agricultures

Soybeans posted gains of 35 to 50 ½ cents across the front months on Monday, with deferreds up 23 to 32 cents. The cmdtyView national average Cash Bean price was up 47 1/4 cents at \$11.36 3/4.



Corn futures closed the Monday session holding onto the rally and closing near the highs, up 14 ½ to 16 ¼ cents across the front months and 8 to 10 ½ cents higher in the deferreds. The CmdtyView national average Cash Corn price was 15 cents higher at \$4.08 3/4.



The wheat complex posted Monday gains, despite a weaker export data. Spillover support from the corn and beans was supportive. Chicago SRW contracts were 11 3/4 to 15 1/2 cents higher on Monday. KC HRW futures were up 7 ½ to 12 ¾ cents at the close. MPLS spring wheat was 8 ½ to 11 ¼ cents higher on the day.

Future Settlement Price Tuesday, July 07th , 2 0 2 6

Instrument	Last	Net Change	High	Low	Volume
S & P 500	7,574.00	-17.50	7,601.25	7,570.75	51,745.00
NASDAQ 100	29,669.25	-271.75	29,973.75	29,628.25	49,255.00
Dow Jones	53,422.00	50.00	53,471.00	53,352.00	4,265.00
Gold	4,142.20	-25.30	4,179.50	4,135.20	13,650.00
Silver	61.51	-0.82	62.59	61.26	4,039.00
Copper	6.23	0.06	6.27	6.17	37,064.00
Crude Oil	68.93	0.38	69.32	68.58	10,458.00
Platinum	1,643.10	15.00	1,675.10	1,620.70	15,583.00
Palladium	1,271.10	-1.40	1,294.50	1,259.50	4,639.00
Natural Gas	3.23	-0.01	3.27	3.23	2,799.00
Wheat	609-6	-6.00	613-0	609-2	3,069.00
Soy Beans	1192-4	-2.00	1197-2	1188-0	13,048.00
Corn	457-0	-6.00	459-0	455-0	13,246.00

Daily Swings (The Pivot Levels)

Instrument	Trading Range						
	S3	S2	S1	Pivot	R1	R2	R3
Dow Jones	52,053.62	52,224.42	52,562.25	52,733.05	53,070.88	53,241.68	53,579.51
S & P 500	7,313.75	7,370.65	7,426.95	7,483.85	7,540.15	7,597.05	7,653.35
NASDAQ 100	27,972.35	28,529.84	28,929.52	29,487.01	29,886.69	30,444.18	30,843.87
Gold	4,060.52	4,100.64	4,134.67	4,174.79	4,208.82	4,248.94	4,282.97
Silver	59.72	60.76	61.48	62.52	63.24	64.28	64.99
Copper	6.10	6.13	6.19	6.22	6.28	6.32	6.37
Crude Oil	66.61	67.22	67.98	68.59	69.35	69.96	70.72
Platinum	1,560.84	1,590.82	1,614.74	1,664.7	1,668.64	1,698.62	1,722.54
Palladium	1,221.34	1,240.42	1,255.09	1,274.1	1,288.84	1,307.92	1,322.59
Natural Gas	3.09	3.13	3.19	3.22	3.29	3.32	3.39
Wheat	589.14	594.87	604.44	610.17	619.74	625.47	635.04
Cotton	76.59	77.07	77.69	78.17	78.79	79.27	79.89
Corn	434.00	439.30	448.15	453.45	462.30	467.60	476.45

Source: - News & Quotes (Reuters, Investing, Bloomberg, FXStreet, Barchart)

Disclaimer: This document has been prepared by IGI Finex Securities Limited and is for information purposes only. Whilst every effort has been made to ensure that all the information (including any recommendations or opinions expressed) contained in this document (the information) is not misleading or unreliable, IGI Finex Securities Limited makes no representation as to the accuracy or completeness of the information. Neither IGI Finex Securities Limited nor any director, officer or employee of IGI Finex Securities Limited shall in any manner be liable or responsible for any loss that may be occasioned as consequence of a party relying on the information. This document takes no account of the investment objectives, financial situation and particular needs of investors, who shall seek further professional advice before making any investment decision. This document and the information may not be reproduced, distributed or published by any recipient for any purpose.

Contact Details

Commodity Team

Zaeem Haider Khan	Head of Commodities	Tel: (+92-21) 35301405	zaeem.haider@igi.com.pk
Shakeel Ahmad	Branch Manager – Faisalabad	Tel: (+92-41) 2540843-45	shakeel.ahmad1@igi.com.pk
Ehsan Ul Haq	Trader – Lahore	Tel: (+92-42) 3830559-68	ehsan.haq@igi.com.pk
Dil Muhammad	Trader – Lahore	Tel: (+92-41) 2540843-45	dil.muhammad@igi.com.pk
Inamullah Shakir	Trader – Islamabad	Tel: (+92-21) 32429613-14	inam.ullah@igi.com.pk
Sheikh Muhammad Imran	Trader – Karachi	Tel: (+92-21) 35301684	imran.ahmed@igi.com.pk
Asif Saleem	Branch Manager – Rahim Yar Khan	Tel: (+92-68) 5871652-6	asif.saleem@igi.com.pk
Mahtab Ali	Branch Manager – Multan	Tel: (+92-61) 4512003	mahtab.ali@igi.com.pk

Research Team

Abdullah Farhan	Head of Research	Tel: (+92-21) 111-234-234 Ext: 912	abdullah.farhan@igi.com.pk
Sakina Makati	Research Analyst	Tel: (+92-21) 111-234-234 Ext: 810	sakina.makati@igi.com.pk
Syed Muzammil Hassan Rizvi	Research Analyst	Tel: (+92-21) 111-234-234 Ext: 569	muzammil.rizvi@igi.com.pk
Sufyan Siddiqui	Database Officer	Tel: (+92-21) 111-234-234 Ext: 888	sufyan.siddiqui@igi.com.pk

IGI Finex Securities Limited

Trading Rights Entitlement Certificate (TREC) Holder of Pakistan Stock Exchange Limited |
Corporate member of Pakistan Mercantile Exchange Limited
Website: www.igisecurities.com.pk

Head Office

Suite No 701-713, 7th Floor, The Forum, G-20,
Khayaban-e-Jami Block-09, Clifton, Karachi-75600
UAN: (+92-21) 111-444-001 | (+92-21) 111-234-234
Fax: (+92-21) 35309169, 35301780

Lahore Office

Shop # G-009, Ground Floor,
Packages Mall
Tel: (+92-42) 38303560-69
Fax: (+92-42) 38303559

Islamabad Office

3rd Floor, Kamran Centre,
Block- B, Jinnah Avenue, Blue Area
Tel: (+92-51) 2604861-2, 2604864,
2273439
Fax: (+92-51) 2273861

Faisalabad Office

Office No. 2, 5 & 8, Ground Floor, The
Regency International 949, The Mall
Faisalabad
Tel: (+92-41) 2540843-45

Rahim Yar Khan Office

Plot # 12, Basement of Khalid Market,
Model Town, Town Hall Road
Tel: (+92-68) 5871652-3
Fax: (+92-68) 5871651

Multan Office

Mezzanine Floor, Abdali Tower,
Abdali Road
Tel: (92-61) 4512003, 4571183