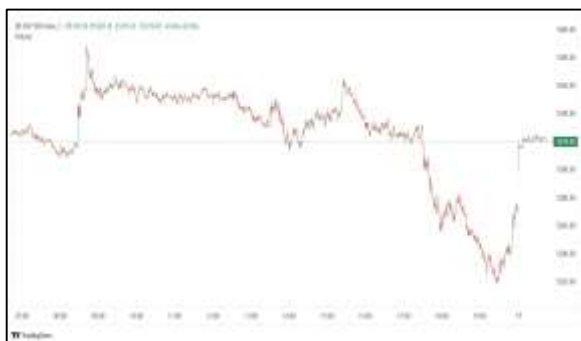


Commodities and Indices Market View

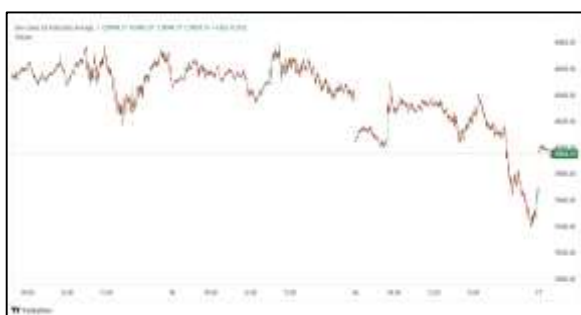
Wednesday, July 8, 2026



Technicals



S&P 500	RSI (20:80)	Sto Fast
	55.47	75.01% 81.53%



Dow Jones	RSI (20:80)	Sto Fast
	68.88	96.03% 93.69%

US Stock Market

DJIA	S&P 500	NASDAQ
52,925.15	7,503.85	25,818.69
-0.25%	-0.45%	-1.16%

The Nasdaq ended sharply lower on Tuesday, weighed down by losses in Micron Technology and other chipmakers due to mounting doubts about the sustainability of Wall Street's AI-driven rally.

Eight of the 11 S&P 500 sector indexes declined, led lower by industrials (.SPLRCI), down 3.41%, followed by a 2.45% loss in materials (.SPLRCM).

The S&P 500 declined 0.45% to end the session at 7,503.85 points. The Nasdaq declined 1.16% to 25,818.69 points, while the Dow Jones Industrial Average declined 0.25% to 52,925.15 points. The Dow briefly hit a record high earlier in the session before losing ground.

Volume on U.S. exchanges was relatively light, with 17.5 billion shares traded, compared with an average of 23.3 billion shares over the previous 20 sessions.

Major Economic Releases for Today

Period	Event	GMT	Forecast	Previous
JULY	Consumer Price Index (MoM)	6:30	-0.20%	-0.10%
JULY	Consumer Price Index (YoY)	6:30	1.10%	1.20%
JULY	Producer Price Index (YoY)	6:30	4.20%	3.90%
JULY	RBNZ Interest Rate Decision	7:00	2.50%	2.25%
JULY	Industrial Production s.a. (MoM)	11:00	0.20%	0.40%

Dow Jones Industrial Average

At the close in NYSE, the Dow Jones Industrial Average declined 0.25%. The best performers of the session on the Dow Jones Industrial Average were Chevron Corp (NYSE:CVX), which rose 3.52% or 5.91 points to trade at 174.01 at the close. Meanwhile, Johnson & Johnson (NYSE:JNJ) added 3.05% or 7.91 points to end at 267.24 and Unitedhealth Group (NYSE:UNH) was up 2.44% or 10.20 points to 428.19 in late trade.

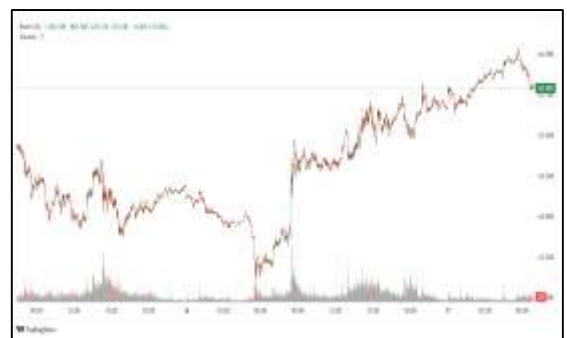


The worst performers of the session were Caterpillar Inc (NYSE:CAT), which fell 3.07% or 29.80 points to trade at 940.12 at the close. Honeywell International Inc (NASDAQ:HON) declined 2.65% or 6.13 points to end at 225.05 and Sherwin-Williams Co (NYSE:SHW) was down 1.97% or 6.87 points to 342.26.



NASDAQ 100

At the close in NYSE, the NASDAQ Composite index lost 1.16%. The top performers on the NASDAQ Composite were Creative Global Technology Holdings Ltd (NASDAQ:CGTL) which rose 1,361.29% to 4.53, Crinetics Pharmaceuticals Inc (NASDAQ:CRNX) which was up 98.74% to settle at 83.53 and ClearOne Inc (NASDAQ:CLRO) which gained 96.86% to close at 13.78.



The worst performers were Lianhe Sowell Int Group (NASDAQ:LHSW) which was down 41.72% to 3.96 in late trade, WF Holding Ltd (NASDAQ:WFF) which lost 31.65% to settle at 2.03 and KIDZ AI Inc (NASDAQ:KIDZ) which was down 29.90% to 0.74 at the close.

OIL

Oil prices climbed nearly 2% on Wednesday after the U.S. military launched airstrikes against Iran and reimposed crude sales sanctions, raising fears their fragile truce was unravelling and Middle East supplies could be disrupted again.



Brent crude futures gained \$1.38, or 1.9%, to \$75.54 a barrel, and U.S. West Texas Intermediate crude climbed to \$71.81 a barrel, up \$1.37, or 1.9% at 0128 GMT.

Precious and Base Metals

Gold prices swung between gains and losses on Wednesday, as concerns around inflation and higher interest rates rose after fresh U.S. strikes on Iran lifted oil and the dollar ahead of the release of the Federal Reserve's June meeting minutes.

Spot gold rose 0.5% to \$4,125.59 per ounce by 0305 GMT, after dropping to its lowest since July 2 earlier in the day. U.S. gold futures for August delivery shed 0.5% to \$4,136.30.

While gold is seen as an inflation hedge, high interest rates tend to weigh on the non-yielding asset.

Among other metals, spot silver rose 0.8% to \$60.47 per ounce, platinum slipped 0.3% to \$1,635.45 and palladium dropped 0.6% to \$1,268.64.



Traditional Agricultures

Soybeans found late session strength to post 2 to 9 ¼ cent gains, as nearby July was up 14 ½ cents. The cmdtyView national average Cash Bean price was up 10 1/4 cents at \$11.46.

Corn futures extended the rally to Tuesday, with contracts closing 3 ½ to 6 ¾ cents higher, as July was just 1 ¾ cents higher. The CmdtyView national average Cash Corn price was a nickel higher at \$4.13 3/4.

The wheat complex found late session strength on Tuesday. Chicago SRW contracts were 3 ¼ to 7 ¼ cents in the green on the day. KC HRW futures were 1 ¼ to 4 ¾ cents higher at the close. MPLS spring wheat was up 1 ¼ to 4 ½ cents in most contracts, as nearby July was 11 ½ cents higher.



Future Settlement Price Wednesday, July 08th, 2026

Instrument	Last	Net Change	High	Low	Volume
S & P 500	7,555.00	3.75	7,563.00	7,533.25	53,912.00
NASDAQ 100	29,472.75	81.25	29,558.75	29,266.00	51,646.00
Dow Jones	53,146.00	-51.00	53,207.00	53,095.00	4,624.00
Gold	4,138.50	-18.90	4,142.30	4,104.00	20,253.00
Silver	60.96	-0.38	61.17	60.01	5,131.00
Copper	6.23	-0.01	6.28	6.17	27,618.00
Crude Oil	72.22	1.78	72.72	71.75	21,379.00
Platinum	1,663.00	19.90	1,673.50	1,613.10	12,193.00
Palladium	1,281.30	10.20	1,291.50	1,250.50	3,459.00
Natural Gas	3.28	0.01	3.29	3.27	1,485.00
Wheat	620-6	0.00	620-6	614-4	3,568.00
Soy Beans	1199-0	-1.00	1199-0	1193-2	13,741.00
Corn	463-0	-3.00	463-6	460-4	18,247.00

Daily Swings (The Pivot Levels)

Instrument	Trading Range						
	S3	S2	S1	Pivot	R1	R2	R3
Dow Jones	52,371.63	52,510.16	52,783.04	52,921.57	53,194.45	53,332.98	53,605.86
S & P 500	7,458.15	7,479.56	7,508.49	7,529.90	7,558.83	7,580.24	7,609.17
NASDAQ 100	29,257.61	29,405.61	29,551.74	29,699.4	29,845.86	29,993.87	30,139.99
Gold	3,987.34	4,045.04	4,076.79	4,134.49	4,166.24	4,223.94	4,255.69
Silver	56.56	58.22	59.15	60.80	61.74	63.39	64.33
Copper	6.00	6.08	6.12	6.20	6.24	6.32	6.37
Crude Oil	65.98	67.30	69.86	71.18	73.74	75.06	77.62
Platinum	1,550.50	1,582.15	1,609.80	1,641.4	1,669.10	1,700.75	1,728.40
Palladium	1,202.59	1,226.42	1,243.84	1,267.6	1,285.09	1,308.92	1,326.34
Natural Gas	3.06	3.12	3.20	3.26	3.33	3.39	3.47
Wheat	602.25	605.81	611.78	615.34	621.31	624.87	630.83
Cotton	76.26	77.27	79.28	80.29	82.30	83.31	85.32
Corn	447.46	451.28	457.26	461.08	467.06	470.88	476.86

Source: - News & Quotes (Reuters, Investing, Bloomberg, FXStreet, Barchart)

Disclaimer: This document has been prepared by IGI Finex Securities Limited and is for information purposes only. Whilst every effort has been made to ensure that all the information (including any recommendations or opinions expressed) contained in this document (the information) is not misleading or unreliable, IGI Finex Securities Limited makes no representation as to the accuracy or completeness of the information. Neither IGI Finex Securities Limited nor any director, officer or employee of IGI Finex Securities Limited shall in any manner be liable or responsible for any loss that may be occasioned as consequence of a party relying on the information. This document takes no account of the investment objectives, financial situation and particular needs of investors, who shall seek further professional advice before making any investment decision. This document and the information may not be reproduced, distributed or published by any recipient for any purpose.

Contact Details

Commodity Team

Zaeem Haider Khan	Head of Commodities	Tel: (+92-21) 35301405	zaeem.haider@igi.com.pk
Shakeel Ahmad	Branch Manager – Faisalabad	Tel: (+92-41) 2540843-45	shakeel.ahmad1@igi.com.pk
Ehsan Ul Haq	Trader – Lahore	Tel: (+92-42) 3830559-68	ehsan.haq@igi.com.pk
Dil Muhammad	Trader – Lahore	Tel: (+92-41) 2540843-45	dil.muhammad@igi.com.pk
Inamullah Shakir	Trader – Islamabad	Tel: (+92-21) 32429613-14	inam.ullah@igi.com.pk
Sheikh Muhammad Imran	Trader – Karachi	Tel: (+92-21) 35301684	imran.ahmed@igi.com.pk
Asif Saleem	Branch Manager – Rahim Yar Khan	Tel: (+92-68) 5871652-6	asif.saleem@igi.com.pk
Mahtab Ali	Branch Manager – Multan	Tel: (+92-61) 4512003	mahtab.ali@igi.com.pk

Research Team

Abdullah Farhan	Head of Research	Tel: (+92-21) 111-234-234 Ext: 912	abdullah.farhan@igi.com.pk
Sakina Makati	Research Analyst	Tel: (+92-21) 111-234-234 Ext: 810	sakina.makati@igi.com.pk
Syed Muzammil Hassan Rizvi	Research Analyst	Tel: (+92-21) 111-234-234 Ext: 569	muzammil.rizvi@igi.com.pk
Sufyan Siddiqui	Database Officer	Tel: (+92-21) 111-234-234 Ext: 888	sufyan.siddiqui@igi.com.pk

IGI Finex Securities Limited

Trading Rights Entitlement Certificate (TREC) Holder of Pakistan Stock Exchange Limited |
Corporate member of Pakistan Mercantile Exchange Limited
Website: www.igisecurities.com.pk

Head Office

Suite No 701-713, 7th Floor, The Forum, G-20,
Khayaban-e-Jami Block-09, Clifton, Karachi-75600
UAN: (+92-21) 111-444-001 | (+92-21) 111-234-234
Fax: (+92-21) 35309169, 35301780

Lahore Office

Shop # G-009, Ground Floor,
Packages Mall
Tel: (+92-42) 38303560-69
Fax: (+92-42) 38303559

Islamabad Office

3rd Floor, Kamran Centre,
Block- B, Jinnah Avenue, Blue Area
Tel: (+92-51) 2604861-2, 2604864,
2273439
Fax: (+92-51) 2273861

Faisalabad Office

Office No. 2, 5 & 8, Ground Floor, The
Regency International 949, The Mall
Faisalabad
Tel: (+92-41) 2540843-45

Rahim Yar Khan Office

Plot # 12, Basement of Khalid Market,
Model Town, Town Hall Road
Tel: (+92-68) 5871652-3
Fax: (+92-68) 5871651

Multan Office

Mezzanine Floor, Abdali Tower,
Abdali Road
Tel: (92-61) 4512003, 4571183