

Commodities and Indices Market View

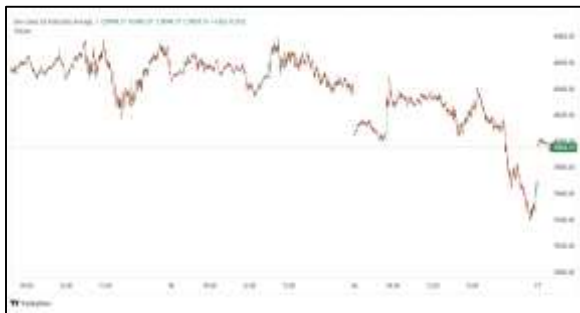
Thursday, April 9, 2026



Technicals



S&P 500	RSI (20:80)	Sto Fast
	59.22	76.35% 87.78%



Dow Jones	RSI (20:80)	Sto Fast
	58.80	72.30% 82.57%

US Stock Market

DJIA	S&P 500	NASDAQ
47,909.92	6,782.81	22,635.00
+2.85%	+2.51%	+2.80%

U.S. stocks closed sharply higher on Wednesday after a last-minute, two-week ceasefire agreement between the United States and Iran lifted investor sentiment. All three major U.S. stock indexes surged at the opening bell, muscled higher by a broad relief rally after a deal brokered by Pakistan resulted in a two-week suspension of the war.

The Dow Jones Industrial Average (.DJI), rose 1,326.33 points, or 2.85%, to 47,910.79, the S&P 500 (.SPX), gained 165.98 points, or 2.51%, to 6,782.83 and the Nasdaq Composite (.IXIC), gained 617.15 points, or 2.80%, to 22,635.00.

Advancing issues outnumbered decliners by a 5.67-to-1 ratio on the NYSE. There were 197 new highs and 45 new lows on the NYSE. On the Nasdaq, 3,582 stocks rose and 1,174 fell as advancing issues outnumbered decliners by a 3.05-to-1 ratio.

The S&P 500 posted 21 new 52-week highs and 5 new lows while the Nasdaq Composite recorded 133 new highs and 57 new lows.

Volume on U.S. exchanges was 20.64 billion shares, compared with the 19.42 billion average for the full session over the last 20 trading days.

Major Economic Releases for Today

Period	Event	GMT	Forecast	Previous
APR	Core Personal Consumption Expenditures (QoQ) (Q4)	5:30	2.70%	2.70%
APR	Gross Domestic Product Annualized (Q4)	5:30	0.70%	0.70%
APR	Gross Domestic Product Price Index (Q4)	5:30	3.80%	3.80%
APR	Unemployment Rate	5:30	6.80%	6.80%
APR	Personal Income (MoM)	5:30	0.30%	0.40%

Dow Jones Industrial Average

At the close in NYSE, the Dow Jones Industrial Average added 2.85% to hit a new 1-month high. The best performers of the session on the Dow Jones Industrial Average were Sherwin-Williams Co (NYSE:SHW), which rose 6.92% or 21.74 points to trade at 335.70 at the close. Meanwhile, Caterpillar Inc (NYSE:CAT) added 6.51% or 47.14 points to end at 771.58 and Home Depot Inc (NYSE:HD) was up 5.46% or 17.39 points to 336.16 in late trade.

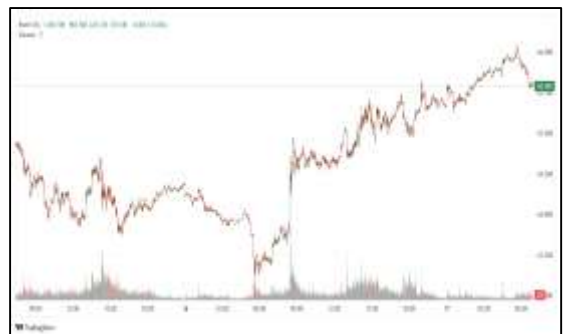


The worst performers of the session were Chevron Corp (NYSE:CVX), which fell 4.30% or 8.66 points to trade at 192.88 at the close. Salesforce Inc (NYSE:CRM) declined 3.62% or 6.62 points to end at 176.34 and International Business Machines (NYSE:IBM) was down 1.38% or 3.39 points to 241.68.



NASDAQ 100

At the close in NYSE, the NASDAQ Composite index gained 2.80%. The top performers on the NASDAQ Composite were Nexentis Technologies Inc (NASDAQ:NXTS) which rose 520.40% to 3.71, U Power Ltd (NASDAQ:UCAR) which was up 331.63% to settle at 2.38 and 707 Cayman Holdings Ltd (NASDAQ:JEM) which gained 91.44% to close at 0.21.



The worst performers were Captivision Inc (NASDAQ:CAPT) which was down 84.33% to 0.06 in late trade, WM Technology Inc (NASDAQ:MAPS) which lost 43.22% to settle at 0.40 and Multisensor AI Holdings Inc (NASDAQ:MSAI) which was down 29.58% to 0.17 at the close.

OIL

Oil prices rose on Thursday as doubts over a fragile two-week Middle East ceasefire raised concerns that energy flows through the crucial Strait of Hormuz will remain restricted.

Brent crude futures were up \$1.96, or 2.07%, at \$96.71 a barrel at 0325 GMT, while U.S. West Texas Intermediate (WTI) crude rose \$2.60, or 2.75%, to \$97.01 a barrel.



Precious and Base Metals

Gold prices held steady on Thursday as market players remained cautious about the direction of U.S.-Iran ceasefire talks, with a key U.S. inflation report due later in the day also in focus for interest rate clues.

Spot gold was little changed at \$4,713.79 per ounce, as of 0311 GMT. U.S. gold futures for June delivery fell 0.8% to \$4,736.50.

Non-yielding gold tends to do well in low-interest-rate environments.

Among other metals, spot silver fell 0.5% to \$73.71 per ounce.

While, platinum lost 0.6% to \$2,017.26 and palladium slid 0.4% to \$1,549.18.



Traditional Agricultures

Soybeans closed the Wednesday session with contracts steady to 3 ¾ cents in the green, getting support from meal. The cmdtyView national average Cash Bean price was up 4 cents at \$10.93 1/4.

Corn futures saw some buying off the early overnight lows, but still managed to close with losses of 1 ¾ to 3 ½ cents. The CmdtyView national average Cash Corn price was down 1 1/2 cents at \$4.08.

The wheat complex was under pressure on Wednesday as money was coming out with pressure from crude oil. Chicago SRW futures was down 13 to 17 ¾ cents in the nearbys on the day. KC HRW futures posted 7 to 12 1/4 cent lower trade into the final bell. MPLS spring wheat saw losses of 11 ¾ to 17 cents in the front months at the close.



Future Settlement Price Thursday, April 09th, 2026					
Instrument	Last	Net Change	High	Low	Volume
S & P 500	6,808.75	-15.00	6,823.00	6,803.50	52,213.00
NASDAQ 100	25,012.75	-61.50	25,065.00	24,980.50	32,317.00
Dow Jones	48,063.00	-81.00	48,151.00	48,045.00	4,086.00
Gold	4,742.50	-34.70	4,757.70	4,718.60	22,643.00
Silver	74.14	-1.25	74.52	72.93	5,647.00
Copper	5.78	0.21	5.79	5.60	74,732.00
Crude Oil	97.49	3.08	98.38	96.25	30,712.00
Platinum	2,067.50	119.60	2,105.00	1,966.70	21,538.00
Palladium	1,601.40	144.80	1,634.50	1,476.00	6,883.00
Natural Gas	2.72	-0.01	2.74	2.72	2,766.00
Wheat	583-6	-1.00	584-4	579-4	2,424.00
Soy Beans	1162-0	0.00	1164-2	1159-6	3,031.00
Corn	448-4	-1.00	448-4	446-4	8,004.00

Daily Swings (The Pivot Levels)							
Instrument	Trading Range						
	S3	S2	S1	Pivot	R1	R2	R3
Dow Jones	45,754.57	45,984.67	46,284.56	46514.66	46,814.55	47,044.65	47,344.54
S & P 500	6,477.81	6,506.18	6,561.52	6689.89	6,645.23	6,673.60	6,728.94
NASDAQ 100	23,488.96	23,634.41	23,918.38	24063.83	24,347.81	24,493.25	24,777.23
Gold	4,518.39	4,621.37	4,680.04	4783.02	4,841.69	4,944.67	5,003.34
Silver	68.08	70.82	72.31	75.04	76.53	79.27	80.76
Copper	5.55	5.61	5.68	5.73	5.80	5.86	5.93
Crude Oil	86.77	89.31	93.21	95.75	99.65	102.19	106.09
Platinum	1,918.40	1,968.95	2,004.00	2054.5	2,089.60	2,140.15	2,175.20
Palladium	1,401.00	1,459.75	1,517.25	1576.0	1,633.50	1,692.25	1,749.75
Natural Gas	2.61	2.65	2.69	2.74	2.78	2.83	2.87
Wheat	566.33	571.71	575.86	581.24	585.38	590.77	594.91
Cotton	68.98	69.64	70.65	71.31	72.32	72.98	73.99
Corn	437.97	440.17	443.72	445.92	449.47	451.67	455.22

Source: - News & Quotes (Reuters, Investing, Bloomberg, FXStreet, Barchart)

Disclaimer: This document has been prepared by IGI Finex Securities Limited and is for information purposes only. Whilst every effort has been made to ensure that all the information (including any recommendations or opinions expressed) contained in this document (the information) is not misleading or unreliable, IGI Finex Securities Limited makes no representation as to the accuracy or completeness of the information. Neither IGI Finex Securities Limited nor any director, officer or employee of IGI Finex Securities Limited shall in any manner be liable or responsible for any loss that may be occasioned as consequence of a party relying on the information. This document takes no account of the investment objectives, financial situation and particular needs of investors, who shall seek further professional advice before making any investment decision. This document and the information may not be reproduced, distributed or published by any recipient for any purpose.

Contact Details

Commodity Team

Zaeem Haider Khan	Head of Commodities	Tel: (+92-21) 35301405	zaeem.haider@igi.com.pk
Shakeel Ahmad	Branch Manager – Faisalabad	Tel: (+92-41) 2540843-45	shakeel.ahmad1@igi.com.pk
Ehsan Ul Haq	Trader – Lahore	Tel: (+92-42) 3830559-68	ehsan.haq@igi.com.pk
Dil Muhammad	Trader – Lahore	Tel: (+92-41) 2540843-45	dil.muhammad@igi.com.pk
Inamullah Shakir	Trader – Islamabad	Tel: (+92-21) 32429613-14	inam.ullah@igi.com.pk
Sheikh Muhammad Imran	Trader – Karachi	Tel: (+92-21) 35301684	imran.ahmed@igi.com.pk
Asif Saleem	Branch Manager – Rahim Yar Khan	Tel: (+92-68) 5871652-6	asif.saleem@igi.com.pk
Mahtab Ali	Branch Manager – Multan	Tel: (+92-61) 4512003	mahtab.ali@igi.com.pk

Research Team

Abdullah Farhan	Head of Research	Tel: (+92-21) 111-234-234 Ext: 912	abdullah.farhan@igi.com.pk
Sakina Makati	Research Analyst	Tel: (+92-21) 111-234-234 Ext: 810	sakina.makati@igi.com.pk
Syed Muzammil Hassan Rizvi	Research Analyst	Tel: (+92-21) 111-234-234 Ext: 569	muzammil.rizvi@igi.com.pk
Sufyan Siddiqui	Database Officer	Tel: (+92-21) 111-234-234 Ext: 888	sufyan.siddiqui@igi.com.pk

IGI Finex Securities Limited

Trading Rights Entitlement Certificate (TREC) Holder of Pakistan Stock Exchange Limited |
Corporate member of Pakistan Mercantile Exchange Limited
Website: www.igisecurities.com.pk

Head Office

Suite No 701-713, 7th Floor, The Forum, G-20,
Khayaban-e-Jami Block-09, Clifton, Karachi-75600
UAN: (+92-21) 111-444-001 | (+92-21) 111-234-234
Fax: (+92-21) 35309169, 35301780

Lahore Office

Shop # G-009, Ground Floor,
Packages Mall
Tel: (+92-42) 38303560-69
Fax: (+92-42) 38303559

Islamabad Office

3rd Floor, Kamran Centre,
Block- B, Jinnah Avenue, Blue Area
Tel: (+92-51) 2604861-2, 2604864,
2273439
Fax: (+92-51) 2273861

Faisalabad Office

Office No. 2, 5 & 8, Ground Floor, The
Regency International 949, The Mall
Faisalabad
Tel: (+92-41) 2540843-45

Rahim Yar Khan Office

Plot # 12, Basement of Khalid Market,
Model Town, Town Hall Road
Tel: (+92-68) 5871652-3
Fax: (+92-68) 5871651

Multan Office

Mezzanine Floor, Abdali Tower,
Abdali Road
Tel: (92-61) 4512003, 4571183