

Commodities and Indices Market View

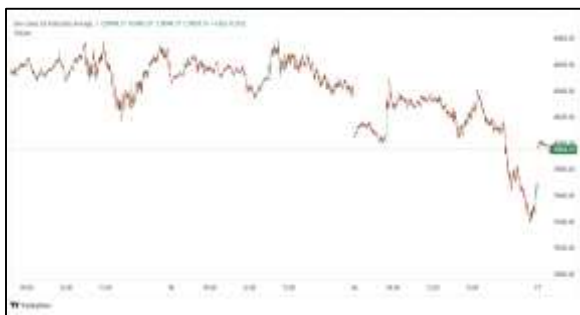
Friday, April 10, 2026



Technicals



S&P 500	RSI (20:80)	Sto Fast
	61.38	86.11% 95.10%



Dow Jones	RSI (20:80)	Sto Fast
	60.83	81.74% 91.82%

US Stock Market

DJIA	S&P 500	NASDAQ
48,185.80	6,824.66	22,822.42
+0.58%	+0.62%	+0.83%

U.S. stocks advanced on Thursday, as ongoing negotiations toward a peaceful resolution to the six-week Middle East conflict helped ease worries over the fragile U.S.-Iran truce. All three major U.S. stock indexes gained ground after rebounding from an earlier dip as Israel sought talks with Lebanon.

The Dow Jones Industrial Average (.DJI), rose 275.88 points, or 0.58%, to 48,185.80, the S&P 500 (.SPX), gained 41.85 points, or 0.62%, to 6,824.66 and the Nasdaq Composite (.IXIC), gained 187.42 points, or 0.83%, to 22,822.42.

Advancing issues outnumbered decliners by a 1.99-to-1 ratio on the NYSE. There were 254 new highs and 83 new lows on the NYSE.

On the Nasdaq, 2,651 stocks rose and 2,029 fell as advancing issues outnumbered decliners by a 1.31-to-1 ratio.

The S&P 500 posted 44 new 52-week highs and 19 new lows while the Nasdaq Composite recorded 158 new highs and 135 new lows.

Volume on U.S. exchanges was 17 billion shares, compared with the 19.38 billion average for the full session over the last 20 trading days.

Major Economic Releases for Today

Period	Event	GMT	Forecast	Previous
APR	Core Personal Consumption Expenditures (QoQ) (Q4)	5:30	2.70%	2.70%
APR	Gross Domestic Product Annualized (Q4)	5:30	0.70%	0.70%
APR	Gross Domestic Product Price Index (Q4)	5:30	3.80%	3.80%
APR	Unemployment Rate	5:30	6.80%	6.80%
APR	Personal Income (MoM)	5:30	0.30%	0.40%

Dow Jones Industrial Average

At the close in NYSE, the Dow Jones Industrial Average rose 0.58% to hit a new 1-month high. The best performers of the session on the Dow Jones Industrial Average were Amazon.com Inc (NASDAQ:AMZN), which rose 5.60% or 12.40 points to trade at 233.65 at the close. Meanwhile, Nike Inc (NYSE:NKE) added 2.02% or 0.87 points to end at 44.00 and Caterpillar Inc (NYSE:CAT) was up 2.01% or 15.49 points to 787.07 in late trade.

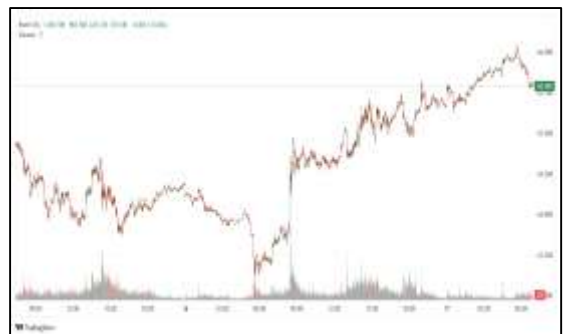


The worst performers of the session were Salesforce Inc (NYSE:CRM), which fell 2.89% or 5.09 points to trade at 170.84 at the close. International Business Machines (NYSE:IBM) declined 1.91% or 4.62 points to end at 237.12 and Chevron Corp (NYSE:CVX) was down 1.31% or 2.53 points to 190.37.



NASDAQ 100

At the close in NYSE, the NASDAQ Composite index gained 0.83%. The top performers on the NASDAQ Composite were DarkIris Inc (NASDAQ:DKI) which rose 146.60% to 0.98, Aimei Health Technology Co Ltd (NASDAQ:AFJK) which was up 135.63% to settle at 67.86 and Beasley Broadcast Group Inc (NASDAQ:BBGI) which gained 94.36% to close at 11.02.



The worst performers were Captivision Inc (OTC:CPTAF) which was down 75.61% to 0.02 in late trade, Actelis Networks Inc (NASDAQ:ASNS) which lost 73.39% to settle at 0.09 and Hub Cyber Security Ltd (NASDAQ:HUBC) which was down 41.86% to 0.12 at the close.

OIL

Oil prices climbed on Friday, driven by fresh anxiety over supplies from Saudi Arabia and as tanker traffic through the critical Strait of Hormuz remained largely frozen.

Brent crude futures added 58 cents, or 0.60%, to \$96.50 a barrel as of 0338 GMT. West Texas Intermediate futures were up 49 cents, 0.50%, at \$98.36 a barrel.



Precious and Base Metals

Gold dipped on Friday as a firmer dollar and U.S.-Iran ceasefire uncertainty weighed, but the metal stayed on course for a third consecutive weekly climb as investors priced in earlier and deeper U.S. rate cuts, supporting non-yielding bullion.

Spot gold was down 0.1% at \$4,759.54 per ounce by 0316 GMT. The metal, however, has gained 1.8% so far this week. U.S. gold futures for June delivery fell 0.7% to \$4,782.70.

Non-yielding gold tends to do well in low-interest-rate environments.

Among other metals, spot silver rose 0.9% to \$75.74 per ounce, platinum lost 2% to \$2,061.06, and palladium fell 1.2% to \$1,539.43.



Traditional Agricultures

Soybeans posted gains of ¼ to 4 cents on Thursday, led by the front months. The cmdtyView national average Cash Bean price was up 3 3/4 cents at \$10.97 1/2.

Corn futures saw losses on Thursday, with contracts down 1 ½ to 3 ¼ cents. The CmdtyView national average Cash Corn price was down 3 cents at \$4.05 1/2.

The wheat complex was weaker on Thursday, following an increased stocks number from USDA. Chicago SRW futures saw losses of 4 ¾ to 7 ¼ cents at the close. KC HRW futures were down 4 ¾ to 8 ¼ cents on the session. MPLS spring wheat was down 4 ¾ to 5 ¾ cents in on the day. Crude oil was back up \$4.06 on Thursday.



Future Settlement Price Friday, April 10th , 2 0 2 6

Instrument	Last	Net Change	High	Low	Volume
S & P 500	6,865.00	1.75	6,869.25	6,851.00	39,771.00
NASDAQ 100	25,279.50	28.00	25,303.75	25,193.00	27,960.00
Dow Jones	48,371.00	-45.00	48,419.00	48,349.00	3,858.00
Gold	4,790.60	-27.40	4,810.00	4,760.40	23,462.00
Silver	75.99	-0.45	76.12	75.00	3,794.00
Copper	5.78	0.02	5.79	5.74	2,997.00
Crude Oil	97.94	0.07	99.24	97.58	21,093.00
Platinum	2,082.10	-30.00	2,122.80	2,074.10	2,512.00
Palladium	1,562.50	-4.50	1,575.50	1,551.00	321.00
Natural Gas	2.66	-0.01	2.68	2.66	1,798.00
Wheat	575-6	-1.00	576-4	572-0	7,391.00
Soy Beans	1167-4	0.00	1169-6	1165-0	4,525.00
Corn	444-2	-2.00	445-6	444-0	8,406.00

Daily Swings (The Pivot Levels)

Instrument	Trading Range						
	S3	S2	S1	Pivot	R1	R2	R3
Dow Jones	46,214.11	46,596.14	47,253.03	47635.06	48,291.95	48,673.98	49,330.87
S & P 500	6,697.68	6,718.98	6,750.90	6772.20	6,804.12	6,825.42	6,857.34
NASDAQ 100	24,469.85	24,613.39	24,758.28	24901.82	25,046.71	25,190.25	25,335.14
Gold	4,626.38	4,673.94	4,730.45	4778.01	4,834.52	4,882.08	4,938.59
Silver	69.51	71.23	73.38	75.10	77.25	78.97	81.13
Copper	5.62	5.65	5.70	5.74	5.79	5.83	5.87
Crude Oil	87.69	91.48	95.06	98.85	102.43	106.22	109.80
Platinum	1,902.30	1,955.05	2,028.25	2081.0	2,154.20	2,206.95	2,280.15
Palladium	1,480.09	1,510.42	1,533.34	1563.6	1,586.59	1,616.92	1,639.84
Natural Gas	2.55	2.60	2.64	2.69	2.72	2.77	2.81
Wheat	547.99	559.04	566.52	577.57	585.04	596.10	603.57
Cotton	69.13	69.99	71.62	72.48	74.11	74.97	76.60
Corn	433.62	438.00	441.38	445.72	449.12	453.50	456.88

Source: - News & Quotes (Reuters, Investing, Bloomberg, FXStreet, Barchart)

Disclaimer: This document has been prepared by IGI Finex Securities Limited and is for information purposes only. Whilst every effort has been made to ensure that all the information (including any recommendations or opinions expressed) contained in this document (the information) is not misleading or unreliable, IGI Finex Securities Limited makes no representation as to the accuracy or completeness of the information. Neither IGI Finex Securities Limited nor any director, officer or employee of IGI Finex Securities Limited shall in any manner be liable or responsible for any loss that may be occasioned as consequence of a party relying on the information. This document takes no account of the investment objectives, financial situation and particular needs of investors, who shall seek further professional advice before making any investment decision. This document and the information may not be reproduced, distributed or published by any recipient for any purpose.

Contact Details

Commodity Team

Zaeem Haider Khan	Head of Commodities	Tel: (+92-21) 35301405	zaeem.haider@igi.com.pk
Shakeel Ahmad	Branch Manager – Faisalabad	Tel: (+92-41) 2540843-45	shakeel.ahmad1@igi.com.pk
Ehsan Ul Haq	Trader – Lahore	Tel: (+92-42) 3830559-68	ehsan.haq@igi.com.pk
Dil Muhammad	Trader – Lahore	Tel: (+92-41) 2540843-45	dil.muhammad@igi.com.pk
Inamullah Shakir	Trader – Islamabad	Tel: (+92-21) 32429613-14	inam.ullah@igi.com.pk
Sheikh Muhammad Imran	Trader – Karachi	Tel: (+92-21) 35301684	imran.ahmed@igi.com.pk
Asif Saleem	Branch Manager – Rahim Yar Khan	Tel: (+92-68) 5871652-6	asif.saleem@igi.com.pk
Mahtab Ali	Branch Manager – Multan	Tel: (+92-61) 4512003	mahtab.ali@igi.com.pk

Research Team

Abdullah Farhan	Head of Research	Tel: (+92-21) 111-234-234 Ext: 912	abdullah.farhan@igi.com.pk
Sakina Makati	Research Analyst	Tel: (+92-21) 111-234-234 Ext: 810	sakina.makati@igi.com.pk
Syed Muzammil Hassan Rizvi	Research Analyst	Tel: (+92-21) 111-234-234 Ext: 569	muzammil.rizvi@igi.com.pk
Sufyan Siddiqui	Database Officer	Tel: (+92-21) 111-234-234 Ext: 888	sufyan.siddiqui@igi.com.pk

IGI Finex Securities Limited

Trading Rights Entitlement Certificate (TREC) Holder of Pakistan Stock Exchange Limited |
Corporate member of Pakistan Mercantile Exchange Limited
Website: www.igisecurities.com.pk

Head Office

Suite No 701-713, 7th Floor, The Forum, G-20,
Khayaban-e-Jami Block-09, Clifton, Karachi-75600
UAN: (+92-21) 111-444-001 | (+92-21) 111-234-234
Fax: (+92-21) 35309169, 35301780

Lahore Office

Shop # G-009, Ground Floor,
Packages Mall
Tel: (+92-42) 38303560-69
Fax: (+92-42) 38303559

Islamabad Office

3rd Floor, Kamran Centre,
Block- B, Jinnah Avenue, Blue Area
Tel: (+92-51) 2604861-2, 2604864,
2273439
Fax: (+92-51) 2273861

Faisalabad Office

Office No. 2, 5 & 8, Ground Floor, The
Regency International 949, The Mall
Faisalabad
Tel: (+92-41) 2540843-45

Rahim Yar Khan Office

Plot # 12, Basement of Khalid Market,
Model Town, Town Hall Road
Tel: (+92-68) 5871652-3
Fax: (+92-68) 5871651

Multan Office

Mezzanine Floor, Abdali Tower,
Abdali Road
Tel: (92-61) 4512003, 4571183