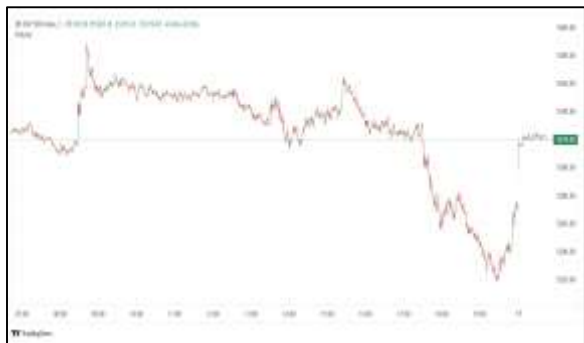


Commodities and Indices Market View

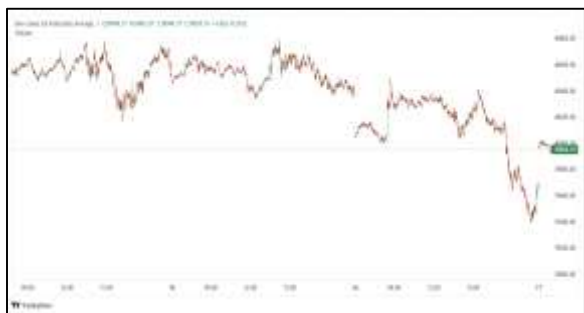
Friday, December 12, 2025



Technicals



S&P 500	RSI (20:80)	Sto Fast
	61.47	90.50% 93.63%



Dow Jones	RSI (20:80)	Sto Fast
	65.54	86.11% 89.58%

US Stock Market

DJIA	S&P 500	NASDAQ
48,704.01	6,901.00	23,593.86
+1.34%	+0.21%	-0.25%

Wall Street ended higher on Wednesday, after the Federal Reserve cut interest rates by a quarter percentage point as expected and investors bet on further easing down the road even as the central bank signaled that it will put further cuts on pause for now.

The Dow Jones Industrial Average (.DJI), rose 646.26 points, or 1.34%, to 48,704.01, vaulting above its November 12 closing record. The S&P 500 (.SPX), gained 14.32 points, or 0.21%, to 6,901.00, breaching its October 28 record close. The Nasdaq Composite (.IXIC), lost 60.30 points, or 0.25%, to 23,593.86.

Advancing issues outnumbered decliners by a 2.2-to-1 ratio on the NYSE, where there were 673 new highs and 69 new lows. On the Nasdaq, 2,667 stocks rose and 2,087 fell as advancing issues outnumbered decliners by a 1.28-to-1 ratio.

The S&P 500 posted 52 new 52-week highs and 3 new lows while the Nasdaq Composite recorded 185 new highs and 81 new lows.

On U.S. exchanges, 17.05 billion shares changed hands, compared with the 17.39 billion 20-day moving average.

Major Economic Releases for Today

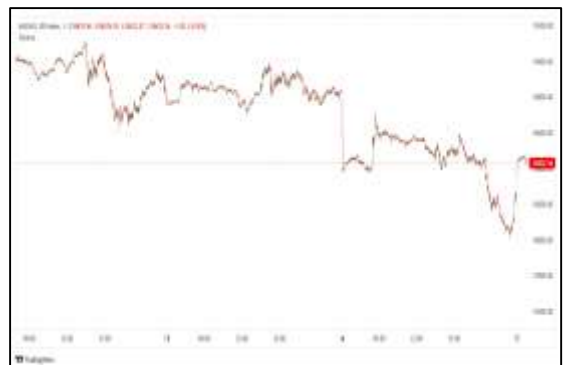
Period	Event	GMT	Forecast	Previous
NOV	Harmonized Index of Consumer Prices (MoM)	12:00	-0.50%	-0.50%
NOV	Harmonized Index of Consumer Prices (YoY)	12:00	2.60%	2.60%
DEC	Consumer Inflation Expectations	2:30	--	3.60%
NOV	Retail Sales (YoY)	7:00	5.00%	4.90%
NOV	SNB Interest Rate Decision	7:00	2.90%	2.90%

Dow Jones Industrial Average

At the close in NYSE, the Dow Jones Industrial Average gained 1.34% to hit a new all time high. The best performers of the session on the Dow Jones Industrial Average were Visa Inc Class A (NYSE:V), which rose 6.11% or 19.90 points to trade at 345.63 at the close. Meanwhile, Nike Inc (NYSE:NKE) added 2.96% or 1.95 points to end at 67.74 and Unitedhealth Group (NYSE:UNH) was up 2.57% or 8.44 points to 336.81 in late trade.



The worst performers of the session were Coca-Cola Co (NYSE:KO), which fell 1.57% or 1.10 points to trade at 69.11 at the close. NVIDIA Corporation (NASDAQ:NVDA) declined 1.55% or 2.85 points to end at 180.93 and Cisco Systems Inc (NASDAQ:CSCO) was down 1.22% or 0.98 points to 79.27.



NASDAQ 100

At the close in NYSE, the NASDAQ Composite index fell 0.26%. The top performers on the NASDAQ Composite were Agape ATP Corp (NASDAQ:ATPC) which rose 162.21% to 0.18, PetMed Express Inc (NASDAQ:PETS) which was up 68.36% to settle at 2.98 and Velo3D Inc (NASDAQ:VELO) which gained 55.58% to close at 13.38.



The worst performers were Oriental Culture Holding Ltd (NASDAQ:OCG) which was down 89.16% to 0.94 in late trade, Rezolute Inc (NASDAQ:RZLT) which lost 87.25% to settle at 1.39 and C3is Inc (NASDAQ:CISS) which was down 80.81% to 0.33 at the close.



OIL

Oil prices rose on Friday as the prospect of the U.S. intercepting more Venezuelan oil tankers deepened supply concerns, but remained on track for a weekly decline amid optimism over a possible Russia-Ukraine peace agreement.

Brent crude futures rose 29 cents, or 0.5%, to \$61.57 a barrel by 0115 GMT, and U.S. West Texas Intermediate crude was at \$57.91 a barrel, up 31 cents, or 0.5%. Both benchmarks fell about 1.5% on Thursday.

Precious and Base Metals

Gold prices held near a seven-week high on Friday, supported by expectations of more interest rate cuts next year after the U.S. Federal Reserve pushed back against hawkish market bets, while silver hovered just below Thursday's record peak.

Spot gold dipped 0.2% to \$4,275.44 per ounce by 0236 GMT, but was on track for a 1.8% weekly gain after hitting its highest since October 21 on Thursday. U.S. gold futures slipped 0.2% to \$4,306.20.

Spot silver was up 0.4% at \$63.84 per ounce after hitting a record \$64.31 on Thursday, heading for a 9.2% weekly gain.

Elsewhere, platinum was up 0.2% at \$1,698.45, while palladium rose 1.9% to \$1,512.0. Both were headed for a weekly rise.



Traditional Agricultures

Soybeans saw slight gains of 1 to 2 1/4 cents in the nearbys on Thursday. The cmdtyView national average Cash Bean price was 1 3/4 cents higher at \$10.22 1/2.

Corn futures posted higher Thursday trade, with contracts up fractionally to 2 1/2 cents in the nearby contracts. December futures expire on Friday. The CmdtyView national average Cash Corn price was up 1 1/2 cents at \$4.01 1/2.

Wheat saw mixed action on Thursday, with the hard red contracts the weakest. December futures expire on Friday. Chicago SRW futures were up 3 to 4 cents Thursday. KC HRW futures saw penny losses in the front months. MPLS spring wheat was slightly higher in the front months.



Future Settlement Price Friday, December 12th , 2 0 2 5					
Instrument	Last	Net Change	High	Low	Volume
S & P 500	6,904.00	-3.25	6,915.50	6,898.50	43,353.00
NASDAQ 100	25,657.75	-55.75	25,733.25	25,640.75	23,124.00
Dow Jones	48,838.00	92.00	48,883.00	48,772.00	3,937.00
Gold	4,298.60	-14.40	4,313.10	4,295.50	21,901.00
Silver	63.81	-0.79	64.38	63.13	17,362.00
Copper	5.50	0.15	5.52	5.36	46,914.00
Crude Oil	58.03	0.43	58.19	57.88	10,943.00
Platinum	1,713.20	66.00	1,724.50	1,665.40	35,117.00
Palladium	1,542.90	55.40	1,549.00	1,503.00	5,626.00
Natural Gas	4.22	-0.01	4.24	4.21	4,385.00
Wheat	533-6	-2.00	536-0	533-6	2,492.00
Soy Beans	1091-6	-7.00	1094-4	1091-2	6,616.00
Corn	446-0	-4.00	447-0	446-0	5,261.00

Daily Swings (The Pivot Levels)							
		Trading Range					
Instrument	S3	S2	S1	Pivot	R1	R2	R3
Dow Jones	46,880.34	47,171.64	47,614.70	47906.00	48,349.06	48,640.36	49,083.42
S & P 500	6,764.71	6,794.70	6,840.69	6870.68	6,916.67	6,946.66	6,992.65
NASDAQ 100	25,244.77	25,374.54	25,575.49	25705.26	25,906.22	26,035.98	26,236.94
Gold	4,170.94	4,201.07	4,257.04	4287.17	4,343.14	4,373.27	4,429.24
Silver	59.73	60.76	62.67	63.70	65.61	66.64	68.55
Copper	5.25	5.30	5.40	5.46	5.56	5.62	5.71
Crude Oil	54.83	55.92	56.76	57.85	58.69	59.78	60.62
Platinum	1,643.24	1,661.27	1,691.14	1709.1	1,739.04	1,757.07	1,786.94
Palladium	1,468.26	1,485.63	1,514.26	1,531.6	1,560.26	1,577.63	1,606.26
Natural Gas	3.64	3.92	4.08	4.35	4.51	4.79	4.95
Wheat	524.75	527.00	530.25	532.50	535.75	538.00	541.25
Cotton	63.33	63.61	63.79	64.07	64.25	64.53	64.71
Corn	439.50	441.50	444.00	446.00	448.50	450.50	453.00

Source: - News & Quotes (Reuters, Investing, Bloomberg, FXStreet, Barchart)

Disclaimer: This document has been prepared by IGI Finex Securities Limited and is for information purposes only. Whilst every effort has been made to ensure that all the information (including any recommendations or opinions expressed) contained in this document (the information) is not misleading or unreliable, IGI Finex Securities Limited makes no representation as to the accuracy or completeness of the information. Neither IGI Finex Securities Limited nor any director, officer or employee of IGI Finex Securities Limited shall in any manner be liable or responsible for any loss that may be occasioned as consequence of a party relying on the information. This document takes no account of the investment objectives, financial situation and particular needs of investors, who shall seek further professional advice before making any investment decision. This document and the information may not be reproduced, distributed or published by any recipient for any purpose.

Contact Details

Commodity Team

Zaeem Haider Khan	Head of Commodities	Tel: (+92-21) 35301405	zaeem.haider@igi.com.pk
Shakeel Ahmad	Branch Manager – Faisalabad	Tel: (+92-41) 2540843-45	shakeel.ahmad1@igi.com.pk
Ehsan Ul Haq	Trader – Lahore	Tel: (+92-42) 3830559-68	ehsan.haq@igi.com.pk
Dil Muhammad	Trader – Lahore	Tel: (+92-41) 2540843-45	dil.muhammad@igi.com.pk
Inamullah Shakir	Trader – Islamabad	Tel: (+92-21) 32429613-14	inam.ullah@igi.com.pk
Sheikh Muhammad Imran	Trader – Karachi	Tel: (+92-21) 35301684	imran.ahmed@igi.com.pk
Asif Saleem	Branch Manager – Rahim Yar Khan	Tel: (+92-68) 5871652-6	asif.saleem@igi.com.pk
Mahtab Ali	Branch Manager – Multan	Tel: (+92-61) 4512003	mahtab.ali@igi.com.pk

Research Team

Abdullah Farhan	Head of Research	Tel: (+92-21) 111-234-234 Ext: 912	abdullah.farhan@igi.com.pk
Sakina Makati	Research Analyst	Tel: (+92-21) 111-234-234 Ext: 810	sakina.makati@igi.com.pk
Laraib Nisar	Research Analyst	Tel: (+92-21) 111-234-234 Ext: 974	laraib.nisar@igi.com.pk
Sania Bajwa	Research Analyst	Tel: (+92-21) 111-234-234 Ext: 569	sania.bajwa@igi.com.pk
Sufyan Siddiqui	Database Officer	Tel: (+92-21) 111-234-234 Ext: 888	sufyan.siddiqui@igi.com.pk

IGI Finex Securities Limited

Trading Rights Entitlement Certificate (TREC) Holder of Pakistan Stock Exchange Limited |

Corporate member of Pakistan Mercantile Exchange Limited

Website: www.igisecurities.com.pk

Head Office

Suite No 701-713, 7th Floor, The Forum, G-20,
Khayaban-e-Jami Block-09, Clifton, Karachi-75600

UAN: (+92-21) 111-444-001 | (+92-21) 111-234-234

Fax: (+92-21) 35309169, 35301780

Lahore Office

Shop # G-009, Ground Floor,
Packages Mall

Tel: (+92-42) 38303560-69

Fax: (+92-42) 38303559

Islamabad Office

3rd Floor, Kamran Centre,
Block- B, Jinnah Avenue, Blue Area
Tel: (+92-51) 2604861-2, 2604864,
2273439

Fax: (+92-51) 2273861

Faisalabad Office

Office No. 2, 5 & 8, Ground Floor, The
Regency International 949, The Mall
Faisalabad

Tel: (+92-41) 2540843-45

Rahim Yar Khan Office

Plot # 12, Basement of Khalid Market,
Model Town, Town Hall Road

Tel: (+92-68) 5871652-3

Fax: (+92-68) 5871651

Multan Office

Mezzanine Floor, Abdali Tower,
Abdali Road

Tel: (92-61) 4512003, 4571183

IGI Finex Securities Limited

© Copyright 2024 IGI Finex Securities Limited