

Commodities and Indices Market View

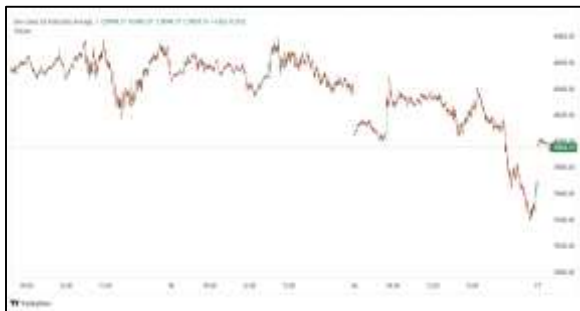
Monday, April 13, 2026



Technicals



S&P 500	RSI (20:80)	Sto Fast
	60.74	93.24% 96.84%



Dow Jones	RSI (20:80)	Sto Fast
	57.84	89.23% 93.31%

US Stock Market

DJIA	S&P 500	NASDAQ
47,916.57	6,816.89	22,902.89
-0.56%	-0.11%	+0.35%

U.S. stocks closed mixed on Friday, with investors pressing pause as they headed into the weekend and kept an eye on ongoing Middle East peace negotiations. A closely watched inflation report showed consumer price growth accelerated as expected, due to price pressures arising from the war on Iran.

The Dow Jones Industrial Average (.DJI), fell 269.23 points, or 0.56%, to 47,916.57, the S&P 500 (.SPX), lost 7.77 points, or 0.11%, to 6,816.89 and the Nasdaq Composite (.IXIC), gained 80.48 points, or 0.35%, to 22,902.89.

Declining issues outnumbered advancers by a 1.13-to-1 ratio on the NYSE. There were 165 new highs and 83 new lows on the NYSE.

On the Nasdaq, 1,874 stocks rose and 2,808 fell as declining issues outnumbered advancers by a 1.5-to-1 ratio.

The S&P 500 posted 23 new 52-week highs and 24 new lows while the Nasdaq Composite recorded 110 new highs and 144 new lows.

Volume on U.S. exchanges was 15.83 billion shares, compared with the 19.18 billion average for the full session over the last 20 trading days.

Major Economic Releases for Today

Period	Event	GMT	Forecast	Previous
APR	Core Personal Consumption Expenditures (QoQ) (Q4)	5:30	2.70%	2.70%
APR	Gross Domestic Product Annualized (Q4)	5:30	0.70%	0.70%
APR	Gross Domestic Product Price Index (Q4)	5:30	3.80%	3.80%
APR	Unemployment Rate	5:30	6.80%	6.80%
APR	Personal Income (MoM)	5:30	0.30%	0.40%

Dow Jones Industrial Average

At the close in NYSE, the Dow Jones Industrial Average fell 0.56%. The best performers of the session on the Dow Jones Industrial Average were NVIDIA Corporation (NASDAQ:NVDA), which rose 2.62% or 4.82 points to trade at 188.73 at the close. Meanwhile, Amazon.com Inc (NASDAQ:AMZN) added 2.02% or 4.73 points to end at 238.38 and Caterpillar Inc (NYSE:CAT) was up 0.46% or 3.59 points to 790.66 in late trade.

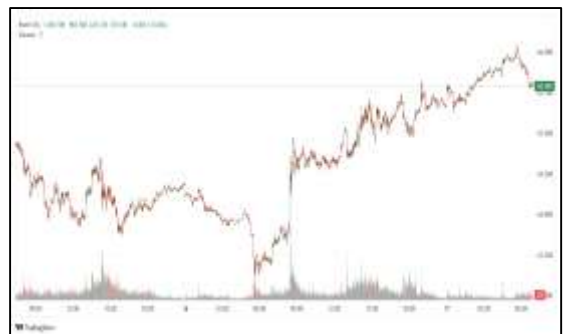


The worst performers of the session were Verizon Communications Inc (NYSE:VZ), which fell 3.64% or 1.74 points to trade at 46.04 at the close. Salesforce Inc (NYSE:CRM) declined 3.45% or 5.89 points to end at 164.96 and Nike Inc (NYSE:NKE) was down 3.14% or 1.38 points to 42.62.



NASDAQ 100

At the close in NYSE, the NASDAQ Composite index gained 0.35%. The top performers on the NASDAQ Composite were Scworx Corp (NASDAQ:WORX) which rose 1,299.91% to 1.53, Fusemachines Inc (NASDAQ:FUSE) which was up 115.29% to settle at 1.83 and Erayak Power Solution Group Inc (NASDAQ:RAYA) which gained 107.77% to close at 0.95.



The worst performers were One and One Green Tech Ltd (NASDAQ:YDDL) which was down 62.90% to 5.16 in late trade, K Wave Media Ltd (NASDAQ:KWM) which lost 33.83% to settle at 0.45 and DarkIris Inc (NASDAQ:DKI) which was down 33.50% to 0.64 at the close.

OIL

Oil prices jumped above \$100 a barrel on Monday as the U.S. Navy prepared to block ships from reaching Iran via the Strait of Hormuz, a move that could restrict Iranian oil exports, after Washington and Tehran failed to reach a deal to end the war.



Brent crude futures rose \$6.71, or 7.05%, to \$101.91 a barrel by 0104 GMT after settling 0.75% lower on Friday. U.S. WTI was at \$104.16 a barrel, up \$7.59, or 7.86%, following a 1.33% loss in the previous session.

Precious and Base Metals

Gold prices fell to a near one-week low on Monday, pressured by a stronger dollar, while a surge in oil prices following failed U.S.-Iran peace talks fuelled inflation worries and dampened expectations for Federal Reserve interest rate cuts this year.

Spot gold was down 0.6% at \$4,718.98 per ounce, as of 0222 GMT, after hitting its lowest level since April 7 earlier in the session. U.S. gold futures for June delivery fell 1% to \$4,742.

Spot gold has fallen more than 11% since the U.S.-Israeli war on Iran began on February 28.

Among other metals, spot silver fell 2.2% to \$74.23 per ounce, platinum lost 0.5% to \$2,034.95, while palladium gained 1% to \$1,535.77.



Traditional Agricultures

Soybeans closed the Friday session with contracts 5 to 10 ½ cents higher, as meal took control. May was up 12 ¼ cents on the week, with November up 3 ¾ cents. The cmdtyView national average Cash Bean price was up 11 cents at \$11.08.

Corn futures closed out the Friday session with contracts down 1 ¼ to 3 ¾ cents at the close. May settled Friday, with the weekly loss at 11 ¼ cents, as December fell 9 cents on the week. The CmdtyView national average Cash Corn price was down 2 cents at \$4.02 1/2.

The wheat complex is showing mixed trade on Friday. Chicago SRW futures were down 3 ½ to 6 cents higher on the Friday session, with May 27 ¼ cents lower on the week. KC HRW futures were down ¾ to 3 cents on the day, with front month May the lone exception, up ¼ cent.



Future Settlement Price Monday, April 13th, 2026

Instrument	Last	Net Change	High	Low	Volume
S & P 500	6,801.00	-54.25	6,807.75	6,767.00	98,926.00
NASDAQ 100	25,055.50	-225.75	25,093.75	24,904.50	56,876.00
Dow Jones	47,732.00	-397.00	47,772.00	47,534.00	8,374.00
Gold	4,736.60	-50.80	4,749.50	4,626.00	31,113.00
Silver	74.35	-2.13	74.85	72.55	9,147.00
Copper	5.89	0.12	5.94	5.74	59,876.00
Crude Oil	104.89	8.32	105.63	101.92	42,415.00
Platinum	2,065.20	-46.90	2,122.80	2,050.70	12,006.00
Palladium	1,540.20	-26.80	1,576.00	1,526.00	2,532.00
Natural Gas	2.67	0.02	2.72	2.67	5,309.00
Wheat	579-4	4.00	584-0	578-0	5,408.00
Soy Beans	1176-4	-6.00	1183-6	1174-4	19,687.00
Corn	444-2	1.00	446-0	444-0	21,342.00

Daily Swings (The Pivot Levels)

Instrument	Trading Range						
	S3	S2	S1	Pivot	R1	R2	R3
Dow Jones	47,175.71	47,432.99	47,809.39	48066.67	48,443.07	48,700.35	49,076.75
S & P 500	6,705.27	6,733.41	6,779.03	6807.17	6,852.79	6,880.93	6,926.55
NASDAQ 100	24,573.00	24,680.96	24,881.53	24989.49	25,190.06	25,298.02	25,498.60
Gold	4,554.00	4,590.00	4,641.65	4677.65	4,729.30	4,765.30	4,816.95
Silver	70.80	71.81	72.81	73.82	74.82	75.83	76.84
Copper	5.72	5.74	5.77	5.79	5.82	5.85	5.87
Crude Oil	99.00	100.50	102.62	104.12	106.24	107.74	109.86
Platinum	1,919.60	1,953.30	1,983.70	2017.4	2,047.80	2,081.50	2,111.90
Palladium	1,467.41	1,483.08	1,500.41	1516.0	1,533.41	1,549.08	1,566.41
Natural Gas	2.66	2.68	2.69	2.70	2.71	2.73	2.74
Wheat	556.16	561.83	566.41	572.08	576.66	582.33	586.91
Cotton	74.12	74.48	74.90	75.26	75.68	76.04	76.46
Corn	429.00	433.50	437.25	441.75	445.50	450.00	453.75

Source: - News & Quotes (Reuters, Investing, Bloomberg, FXStreet, Barchart)

Disclaimer: This document has been prepared by IGI Finex Securities Limited and is for information purposes only. Whilst every effort has been made to ensure that all the information (including any recommendations or opinions expressed) contained in this document (the information) is not misleading or unreliable, IGI Finex Securities Limited makes no representation as to the accuracy or completeness of the information. Neither IGI Finex Securities Limited nor any director, officer or employee of IGI Finex Securities Limited shall in any manner be liable or responsible for any loss that may be occasioned as consequence of a party relying on the information. This document takes no account of the investment objectives, financial situation and particular needs of investors, who shall seek further professional advice before making any investment decision. This document and the information may not be reproduced, distributed or published by any recipient for any purpose.

Contact Details

Commodity Team

Zaeem Haider Khan	Head of Commodities	Tel: (+92-21) 35301405	zaeem.haider@igi.com.pk
Shakeel Ahmad	Branch Manager – Faisalabad	Tel: (+92-41) 2540843-45	shakeel.ahmad1@igi.com.pk
Ehsan Ul Haq	Trader – Lahore	Tel: (+92-42) 3830559-68	ehsan.haq@igi.com.pk
Dil Muhammad	Trader – Lahore	Tel: (+92-41) 2540843-45	dil.muhammad@igi.com.pk
Inamullah Shakir	Trader – Islamabad	Tel: (+92-21) 32429613-14	inam.ullah@igi.com.pk
Sheikh Muhammad Imran	Trader – Karachi	Tel: (+92-21) 35301684	imran.ahmed@igi.com.pk
Asif Saleem	Branch Manager – Rahim Yar Khan	Tel: (+92-68) 5871652-6	asif.saleem@igi.com.pk
Mahtab Ali	Branch Manager – Multan	Tel: (+92-61) 4512003	mahtab.ali@igi.com.pk

Research Team

Abdullah Farhan	Head of Research	Tel: (+92-21) 111-234-234 Ext: 912	abdullah.farhan@igi.com.pk
Sakina Makati	Research Analyst	Tel: (+92-21) 111-234-234 Ext: 810	sakina.makati@igi.com.pk
Syed Muzammil Hassan Rizvi	Research Analyst	Tel: (+92-21) 111-234-234 Ext: 569	muzammil.rizvi@igi.com.pk
Sufyan Siddiqui	Database Officer	Tel: (+92-21) 111-234-234 Ext: 888	sufyan.siddiqui@igi.com.pk

IGI Finex Securities Limited

Trading Rights Entitlement Certificate (TREC) Holder of Pakistan Stock Exchange Limited |
Corporate member of Pakistan Mercantile Exchange Limited
Website: www.igisecurities.com.pk

Head Office

Suite No 701-713, 7th Floor, The Forum, G-20,
Khayaban-e-Jami Block-09, Clifton, Karachi-75600
UAN: (+92-21) 111-444-001 | (+92-21) 111-234-234
Fax: (+92-21) 35309169, 35301780

Lahore Office

Shop # G-009, Ground Floor,
Packages Mall
Tel: (+92-42) 38303560-69
Fax: (+92-42) 38303559

Islamabad Office

3rd Floor, Kamran Centre,
Block- B, Jinnah Avenue, Blue Area
Tel: (+92-51) 2604861-2, 2604864,
2273439
Fax: (+92-51) 2273861

Faisalabad Office

Office No. 2, 5 & 8, Ground Floor, The
Regency International 949, The Mall
Faisalabad
Tel: (+92-41) 2540843-45

Rahim Yar Khan Office

Plot # 12, Basement of Khalid Market,
Model Town, Town Hall Road
Tel: (+92-68) 5871652-3
Fax: (+92-68) 5871651

Multan Office

Mezzanine Floor, Abdali Tower,
Abdali Road
Tel: (92-61) 4512003, 4571183