

Commodities and Indices Market View

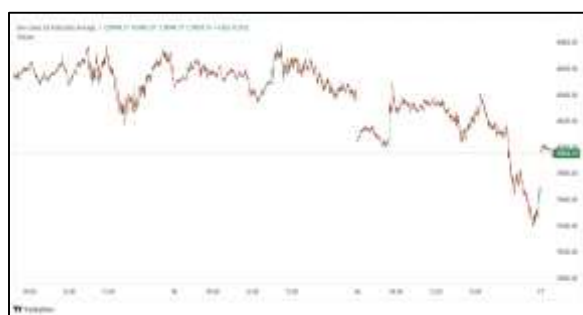
Monday, September 15, 2025



Technicals



S&P 500	RSI (20:80)	Sto Fast
	67.24%	90.25% 93.08%



Dow Jones	RSI (20:80)	Sto Fast
	59.99%	85.39% 82.89%

US Stock Market

DJIA	S&P 500	NASDAQ
45,834.22	6,584.29	22,141.10
-0.59%	-0.05%	+0.44%

The Nasdaq notched a record high close on Friday in a mixed trading session, lifted by Microsoft as investors looked ahead to the Federal Reserve's policy meeting next week, when it is widely expected to cut interest rates to counter a slowdown in the jobs market.

The S&P 500 declined 0.05% to end the session at 6,584.29 points. The Nasdaq gained 0.45% to 22,141.10 points, while the Dow Jones Industrial Average declined 0.59% to 45,834.22 points.

Seven of the 11 S&P 500 sector indexes declined, led lower by health care (.SPXHC), down 1.13%, followed by a 0.97% loss in materials (.SPLRCM).

Declining stocks outnumbered rising ones within the S&P 500 (.AD.SPX), by a 3.3-to-one ratio.

The S&P 500 posted 22 new highs and 3 new lows; the Nasdaq recorded 106 new highs and 43 new lows.

For the week, the S&P 500 rose 1.6%, the Dow climbed almost 1% and the Nasdaq added 2%, helped by a revival in artificial intelligence trade after cloud computing giant Oracle's (ORCL.N), strong forecast on Tuesday.

Major Economic Releases for Today

Period	Event	GMT	Forecast	Previous
AUG	BoC Consumer Price Index Core (YoY) (Aug)	12:30	--	2.60%
AUG	Consumer Price Index (YoY) (Aug)	12:30	--	1.70%
AUG	Retail Sales (MoM) (Aug)	12:30	0.30%	0.50%
AUG	Retail Sales Control Group (Aug)	12:30	--	0.50%
JUL	ILO Unemployment Rate (3M) (Jul)	6:00	4.70%	4.70%

Dow Jones Industrial Average

At the close in NYSE, the Dow Jones Industrial Average lost 0.59%. The best performers of the session on the Dow Jones Industrial Average were Microsoft Corporation (NASDAQ:MSFT), which rose 1.76% or 8.84 points to trade at 509.85 at the close. Meanwhile, Apple Inc (NASDAQ:AAPL) added 1.75% or 4.02 points to end at 234.05 and Walmart Inc (NYSE:WMT) was up 0.82% or 0.84 points to 103.49 in late trade.

The worst performers of the session were Merck & Company Inc (NYSE:MRK), which fell 2.75% or 2.34 points to trade at 82.81 at the close. Sherwin-Williams Co (NYSE:SHW) declined 2.33% or 8.59 points to end at 360.10 and Amgen Inc (NASDAQ:AMGN) was down 2.25% or 6.37 points to 276.36.



NASDAQ 100

At the close in NYSE, the NASDAQ Composite index added 0.45%. The top performers on the NASDAQ Composite were GlucoTrack Inc (NASDAQ:GCTK) which rose 117.45% to 10.59, Office Properties Income Trust (NASDAQ:OPI) which was up 78.62% to settle at 0.55 and HCW Biologics Inc (NASDAQ:HCWB) which gained 68.40% to close at 5.59.



The worst performers were Next Technology Holding Inc (NASDAQ:NXTT) which was down 57.41% to 0.15 in late trade, VCI Global Ltd (NASDAQ:VCIG) which lost 42.79% to settle at 0.44 and Rent the Runway Inc (NASDAQ:RENT) which was down 36.29% to 5.03 at the close.



OIL

Oil prices were little changed on Monday as investors assessed the impact of Ukrainian drone attacks on Russian refineries that could disrupt its crude and fuel exports, while also eyeing U.S. fuel-demand growth.

Brent crude futures edged up 3 cents to \$67.02 a barrel by 0009 GMT while U.S. West Texas Intermediate crude was at \$62.77 a barrel, up 8 cents.

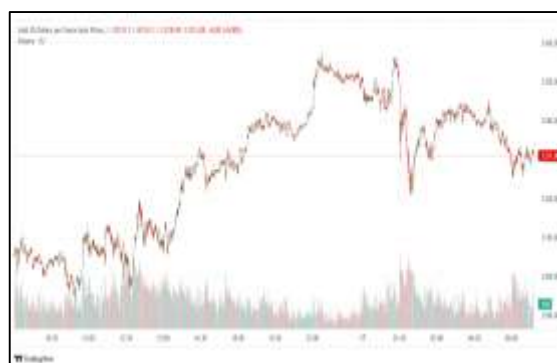
Precious and Base Metals

Gold prices were little changed on Monday as investors awaited a widely expected rate cut by the Federal Reserve this week, with profit-taking and an uptick in the U.S. dollar keeping gains in check.

Spot gold was up 0.1% at \$3,644.98 per ounce, as of 0349 GMT. Bullion climbed about 1.6% last week, reaching a record high of \$3,673.95 on Tuesday.

Non-yielding bullion, often considered a safe-haven asset during broader uncertainty, tends to perform well in low-interest rate environment.

Elsewhere, spot silver was up 0.3% at \$42.29 per ounce, platinum gained 0.9% to \$1,403.77 and palladium rose 0.2% to \$1,199.35.



Traditional Agricultures

Soybeans posted 12 to 13 cent gains in the front months on Friday, as November was up 19 ¼ cents since last Friday. The cmdtyView national average Cash Bean price was up 13 cents at \$9.70 1/4.

Corn futures closed with strength on Friday, as contracts were up 10 to 11 cents in the front months. December managed to close with a 12 cent gain this week. The CmdtyView national average Cash Corn price as up 10 1/2 cents at \$3.85 1/2.

The wheat complex saw Friday gains, as USDA gave a friendlier US number. CBT soft red wheat futures were 2 to 3 cents in the higher at the close, with December up 4 ¼ cents this week. MPLS spring wheat was fractionally higher, with December up 5 ¾ cents this week.



Future Settlement Price Monday, September 15th , 2 0 2 5

Instrument	Last	Net Change	High	Low	Volume
S & P 500	6,593.75	5.50	6,594.00	6,585.25	19,638.00
NASDAQ 100	24,130.00	16.75	24,133.00	24,092.00	13,357.00
Dow Jones	45,897.00	43.00	45,913.00	45,825.00	1,379.00
Gold	3,681.60	-4.80	3,684.30	3,662.80	30,618.00
Silver	42.79	-0.05	42.84	42.50	6,933.00
Copper	4.65	-0.01	4.70	4.64	26,275.00
Crude Oil	63.01	0.32	63.13	62.52	7,087.00
Platinum	1,411.70	11.90	1,422.10	1,385.50	31,159.00
Palladium	1,250.70	12.80	1,277.50	1,225.50	7,565.00
Natural Gas	2.97	0.03	3.00	2.95	5,240.00
Wheat	523-4	-3.00	524-2	521-2	2,515.00
Soy Beans	1043-0	-5.00	1045-4	1041-2	10,642.00
Corn	426-4	-7.00	428-4	425-0	15,498.00

Daily Swings (The Pivot Levels)

Instrument	Trading Range						
	S3	S2	S1	Pivot	R1	R2	R3
Dow Jones	45,184.21	45,380.65	45,744.32	45940.7	46,304.43	46,500.87	46,864.54
S & P 500	6,510.80	6,528.30	6,557.89	6575.39	6,604.98	6,622.48	6,652.07
NASDAQ 100	23,778.02	23,830.51	23,911.53	23964.03	24,045.05	24,097.55	24,178.57
Gold	3,660.68	3,667.19	3,671.15	3677.66	3,681.62	3,688.13	3,692.09
Silver	42.32	42.45	42.59	42.72	42.86	42.99	43.13
Copper	4.63	4.63	4.64	4.65	4.66	4.67	4.67
Crude Oil	61.94	62.10	62.39	62.55	62.84	63.00	63.29
Platinum	1,392.70	1,396.90	1,404.25	1,408.4	1,415.80	1,420.00	1,427.35
Palladium	1,203.16	1,209.83	1,219.41	1,226.0	1,235.66	1,242.33	1,251.91
Natural Gas	2.92	2.94	2.96	2.98	3.00	3.02	3.04
Wheat	503.00	503.00	503.00	503.00	503.00	503.00	503.00
Cotton	65.86	66.09	66.46	66.69	67.06	67.29	67.66
Corn	389.84	394.17	396.59	400.92	403.34	407.67	410.09

Source: - News & Quotes (Reuters, Investing, Bloomberg, FXStreet, Barchart)

Disclaimer: This document has been prepared by IGI Finex Securities Limited and is for information purposes only. Whilst every effort has been made to ensure that all the information (including any recommendations or opinions expressed) contained in this document (the information) is not misleading or unreliable, IGI Finex Securities Limited makes no representation as to the accuracy or completeness of the information. Neither IGI Finex Securities Limited nor any director, officer or employee of IGI Finex Securities Limited shall in any manner be liable or responsible for any loss that may be occasioned as consequence of a party relying on the information. This document takes no account of the investment objectives, financial situation and particular needs of investors, who shall seek further professional advice before making any investment decision. This document and the information may not be reproduced, distributed or published by any recipient for any purpose.

Contact Details

Commodity Team

Zaeem Haider Khan	Head of Commodities	Tel: (+92-21) 35301405	zaeem.haider@igi.com.pk
Shakeel Ahmad	Branch Manager – Faisalabad	Tel: (+92-41) 2540843-45	shakeel.ahmad1@igi.com.pk
Ehsan Ul Haq	Trader – Lahore	Tel: (+92-42) 3830559-68	ehsan.haq@igi.com.pk
Dil Muhammad	Trader – Lahore	Tel: (+92-41) 2540843-45	dil.muhammad@igi.com.pk
Inamullah Shakir	Trader – Islamabad	Tel: (+92-21) 32429613-14	inam.ullah@igi.com.pk
Sheikh Muhammad Imran	Trader – Karachi	Tel: (+92-21) 35301684	imran.ahmed@igi.com.pk
Asif Saleem	Branch Manager – Rahim Yar Khan	Tel: (+92-68) 5871652-6	asif.saleem@igi.com.pk
Mahtab Ali	Branch Manager – Multan	Tel: (+92-61) 4512003	mahtab.ali@igi.com.pk

Research Team

Abdullah Farhan	Head of Research	Tel: (+92-21) 111-234-234 Ext: 912	abdullah.farhan@igi.com.pk
Sakina Makati	Research Analyst	Tel: (+92-21) 111-234-234 Ext: 810	sakina.makati@igi.com.pk
Laraib Nisar	Research Analyst	Tel: (+92-21) 111-234-234 Ext: 974	laraib.nisar@igi.com.pk
Sania Bajwa	Research Analyst	Tel: (+92-21) 111-234-234 Ext: 569	sania.bajwa@igi.com.pk
Sufyan Siddiqui	Database Officer	Tel: (+92-21) 111-234-234 Ext: 888	sufyan.siddiqui@igi.com.pk

IGI Finex Securities Limited

Trading Rights Entitlement Certificate (TREC) Holder of Pakistan Stock Exchange Limited |

Corporate member of Pakistan Mercantile Exchange Limited

Website: www.igisecurities.com.pk

Head Office

Suite No 701-713, 7th Floor, The Forum, G-20,
Khayaban-e-Jami Block-09, Clifton, Karachi-75600

UAN: (+92-21) 111-444-001 | (+92-21) 111-234-234

Fax: (+92-21) 35309169, 35301780

Lahore Office

Shop # G-009, Ground Floor,
Packages Mall

Tel: (+92-42) 38303560-69

Fax: (+92-42) 38303559

Islamabad Office

3rd Floor, Kamran Centre,
Block- B, Jinnah Avenue, Blue Area
Tel: (+92-51) 2604861-2, 2604864,
2273439

Fax: (+92-51) 2273861

Faisalabad Office

Office No. 2, 5 & 8, Ground Floor, The
Regency International 949, The Mall
Faisalabad

Tel: (+92-41) 2540843-45

Rahim Yar Khan Office

Plot # 12, Basement of Khalid Market,
Model Town, Town Hall Road

Tel: (+92-68) 5871652-3

Fax: (+92-68) 5871651

Multan Office

Mezzanine Floor, Abdali Tower,
Abdali Road

Tel: (92-61) 4512003, 4571183

IGI Finex Securities Limited

© Copyright 2024 IGI Finex Securities Limited