

Commodities and Indices Market View

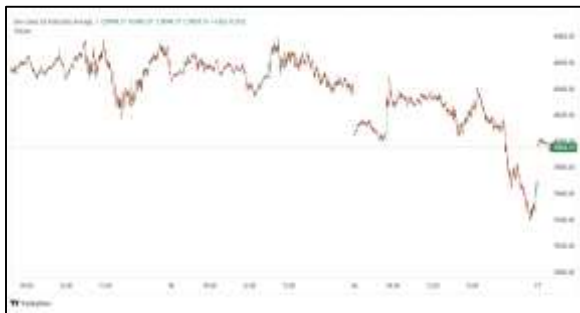
Tuesday, June 23, 2026



Technicals



S&P 500	RSI (20:80)	Sto Fast
	53.11	63.63% 66.96%



Dow Jones	RSI (20:80)	Sto Fast
	60.14	72.24% 71.88%

US Stock Market

DJIA	S&P 500	NASDAQ
51,712.71	7,472.79	26,166.60
+0.29%	-0.37%	-1.32%

The S&P 500 and the Nasdaq closed down on Monday, dragged by declines in the megacap technology stocks including Alphabet, while investors assessed developments in U.S.-Iran negotiations. The Dow closed higher, boosted by the healthcare and industrial sectors.

The Dow Jones Industrial Average (.DJI), rose 148.01 points, or 0.29%, to 51,712.71, the S&P 500 (.SPX), lost 27.79 points, or 0.37%, to 7,472.79 and the Nasdaq Composite (.IXIC), lost 351.33 points, or 1.32%, to 26,166.60.

Declining issues outnumbered advancers by a 1.32-to-1 ratio on the NYSE. There were 345 new highs and 200 new lows on the NYSE.

On the Nasdaq, 2,078 stocks rose and 2,773 fell as declining issues outnumbered advancers by a 1.33-to-1 ratio.

The S&P 500 posted 29 new 52-week highs and 33 new lows while the Nasdaq Composite recorded 144 new highs and 186 new lows.

Volume on U.S. exchanges was 22.97 billion shares, compared with the 22.12 billion average for the full session over the last 20 trading days.

Major Economic Releases for Today

Period	Event	GMT	Forecast	Previous
JUNE	Consumer Price Index (MoM)	6:30	-0.30%	0.40%
JUNE	Consumer Price Index (YoY)	6:30	4.40%	4.20%
JUNE	Trimmed Mean CPI (MoM)	6:30	0.30%	0.30%
JUNE	Trimmed Mean CPI (YoY)	6:30	3.50%	3.40%
JUNE	New Home Sales Change (MoM)	7:00	--	-6.20%

Dow Jones Industrial Average

At the close in NYSE, the Dow Jones Industrial Average rose 0.29%. The best performers of the session on the Dow Jones Industrial Average were Caterpillar Inc (NYSE:CAT), which rose 3.70% or 36.44 points to trade at 1,022.26 at the close. Meanwhile, Amgen Inc (NASDAQ:AMGN) added 2.11% or 7.12 points to end at 344.72 and JPMorgan Chase & Co (NYSE:JPM) was up 2.01% or 6.54 points to 331.76 in late trade.

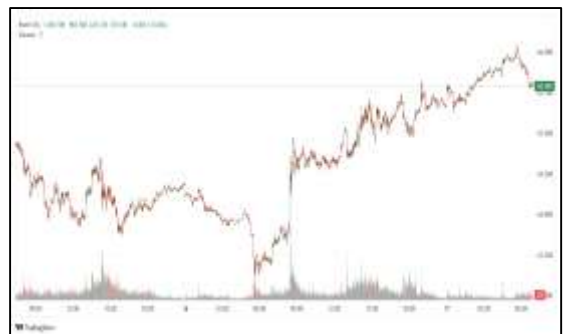


The worst performers of the session were Amazon.com Inc (NASDAQ:AMZN), which fell 4.75% or 11.60 points to trade at 232.79 at the close. Nike Inc (NYSE:NKE) declined 4.42% or 2.00 points to end at 43.20 and Microsoft Corporation (NASDAQ:MSFT) was down 3.20% or 12.14 points to 367.26.



NASDAQ 100

At the close in NYSE, the NASDAQ Composite index lost 1.33%. The top performers on the NASDAQ Composite were Basel Medical Group (NASDAQ:BMGL) which rose 1,095.16% to 7.41, Boxlight Corp Class A (NASDAQ:BOXL) which was up 500.00% to settle at 3.58 and Nexentis Technologies Inc (NASDAQ:NXTS) which gained 155.91% to close at 13.00.



The worst performers were Xiao I Corp ADR (NASDAQ:AIXI) which was down 51.12% to 3.06 in late trade, Lichen China Ltd (NASDAQ:LICN) which lost 44.24% to settle at 1.21 and Sadot Group Inc (NASDAQ:SDOT) which was down 42.83% to 9.25 at the close.

OIL

Oil prices inched down on Tuesday, extending losses from the previous session, as investors looked for clearer signs of progress in restoring crude flows through the Strait of Hormuz following U.S.-Iran peace talks.



Brent crude futures fell 20 cents, or 0.3%, to \$77.70 a barrel and U.S. West Texas Intermediate declined to \$73.74 a barrel, down 12 cents, or 0.2%, as of 0323 GMT.

Precious and Base Metals

Gold prices fell on Tuesday, pressured by a firmer U.S. dollar on expectations of a Federal Reserve interest rate hike this year, while investors assessed U.S.-Iran peace talks.

Spot gold was down 0.7% at \$4,162.60 per ounce, as of 0228 GMT, after falling nearly 1% earlier in the session. U.S. gold futures for August delivery fell 0.5% to \$4,180.50.



Bullion loses appeal in a high-interest-rate environment as it is a non-yielding asset.

Spot silver fell 1.8% to \$64.02 per ounce, platinum lost 1.6% to \$1,651.79, and palladium was down 0.7% at \$1,256.27.



Traditional Agricultures

Soybeans closed mixed on Monday, with most front months steady to down 7 cents. Deferred contracts were fractional to 1 ¼ cents in the green. The cmdtyView national average Cash Bean price was down 6 ¾ cents at \$10.64 ¼.



Corn futures closed the Monday session with contracts down 2 ½ to 6 cents across the board. The CmdtyView national average Cash Corn price was down 5 ¾ cents at \$3.81 ¾.



The wheat complex were under pressure across the three markets to kick off the Monday session. Chicago SRW contracts were 6 to 8 1/4 cents in the red at the close. KC HRW futures saw 10 1/2 to 11 1/2 cent losses across the board. MPLS spring wheat were down 3 ¾ to 10 ¼ cents on the day.

Future Settlement Price Tuesday, June 23rd, 2026

Instrument	Last	Net Change	High	Low	Volume
S & P 500	7,501.00	-40.25	7,549.50	7,496.50	74,694.00
NASDAQ 100	30,352.00	-301.50	30,701.25	30,301.00	60,163.00
Dow Jones	52,064.00	-55.00	52,260.00	52,046.00	6,464.00
Gold	4,157.90	-44.80	4,216.00	4,148.40	18,803.00
Silver	63.22	-2.37	65.32	62.72	9,712.00
Copper	6.43	-0.02	6.47	6.33	25,454.00
Crude Oil	73.64	-0.22	74.45	73.57	10,280.00
Platinum	1,672.20	-35.10	1,707.10	1,646.80	24,063.00
Palladium	1,270.90	-18.20	1,296.50	1,245.00	4,186.00
Natural Gas	3.26	-0.02	3.27	3.25	2,308.00
Wheat	607-4	0.00	611-4	606-4	3,801.00
Soy Beans	1144-4	3.00	1147-4	1141-4	3,898.00
Corn	440-4	1.00	441-2	439-4	4,581.00

Daily Swings (The Pivot Levels)

Instrument	Trading Range						
	S3	S2	S1	Pivot	R1	R2	R3
Dow Jones	51,035.01	51,294.77	51,429.74	51,689.50	51,824.47	52,084.23	52,219.20
S & P 500	7,432.82	7,450.57	7,475.57	7,493.32	7,518.32	7,536.07	7,561.07
NASDAQ 100	29,801.34	29,945.35	30,175.77	30,319.77	30,550.19	30,694.19	30,924.61
Gold	4,050.56	4,094.63	4,149.96	4,194.03	4,249.36	4,293.43	4,348.76
Silver	59.29	61.32	63.17	65.20	67.04	69.07	70.92
Copper	6.15	6.21	6.28	6.34	6.41	6.48	6.55
Crude Oil	67.32	70.28	72.22	75.18	77.12	80.08	82.02
Platinum	1,584.00	1,615.50	1,644.10	1,675.6	1,704.20	1,735.70	1,764.30
Palladium	1,192.00	1,218.50	1,243.50	1,270.0	1,295.00	1,321.50	1,346.50
Natural Gas	3.06	3.14	3.20	3.29	3.35	3.44	3.50
Wheat	586.00	595.25	602.00	611.25	618.00	627.25	634.00
Cotton	77.70	78.44	78.92	79.66	80.14	80.88	81.36
Corn	402.41	406.83	409.16	413.58	415.91	420.33	422.66

Source: - News & Quotes (Reuters, Investing, Bloomberg, FXStreet, Barchart)

Disclaimer: This document has been prepared by IGI Finex Securities Limited and is for information purposes only. Whilst every effort has been made to ensure that all the information (including any recommendations or opinions expressed) contained in this document (the information) is not misleading or unreliable, IGI Finex Securities Limited makes no representation as to the accuracy or completeness of the information. Neither IGI Finex Securities Limited nor any director, officer or employee of IGI Finex Securities Limited shall in any manner be liable or responsible for any loss that may be occasioned as consequence of a party relying on the information. This document takes no account of the investment objectives, financial situation and particular needs of investors, who shall seek further professional advice before making any investment decision. This document and the information may not be reproduced, distributed or published by any recipient for any purpose.

Contact Details

Commodity Team

Zaeem Haider Khan	Head of Commodities	Tel: (+92-21) 35301405	zaeem.haider@igi.com.pk
Shakeel Ahmad	Branch Manager – Faisalabad	Tel: (+92-41) 2540843-45	shakeel.ahmad1@igi.com.pk
Ehsan Ul Haq	Trader – Lahore	Tel: (+92-42) 3830559-68	ehsan.haq@igi.com.pk
Dil Muhammad	Trader – Lahore	Tel: (+92-41) 2540843-45	dil.muhammad@igi.com.pk
Inamullah Shakir	Trader – Islamabad	Tel: (+92-21) 32429613-14	inam.ullah@igi.com.pk
Sheikh Muhammad Imran	Trader – Karachi	Tel: (+92-21) 35301684	imran.ahmed@igi.com.pk
Asif Saleem	Branch Manager – Rahim Yar Khan	Tel: (+92-68) 5871652-6	asif.saleem@igi.com.pk
Mahtab Ali	Branch Manager – Multan	Tel: (+92-61) 4512003	mahtab.ali@igi.com.pk

Research Team

Abdullah Farhan	Head of Research	Tel: (+92-21) 111-234-234 Ext: 912	abdullah.farhan@igi.com.pk
Sakina Makati	Research Analyst	Tel: (+92-21) 111-234-234 Ext: 810	sakina.makati@igi.com.pk
Syed Muzammil Hassan Rizvi	Research Analyst	Tel: (+92-21) 111-234-234 Ext: 569	muzammil.rizvi@igi.com.pk
Sufyan Siddiqui	Database Officer	Tel: (+92-21) 111-234-234 Ext: 888	sufyan.siddiqui@igi.com.pk

IGI Finex Securities Limited

Trading Rights Entitlement Certificate (TREC) Holder of Pakistan Stock Exchange Limited |
Corporate member of Pakistan Mercantile Exchange Limited
Website: www.igisecurities.com.pk

Head Office

Suite No 701-713, 7th Floor, The Forum, G-20,
Khayaban-e-Jami Block-09, Clifton, Karachi-75600
UAN: (+92-21) 111-444-001 | (+92-21) 111-234-234
Fax: (+92-21) 35309169, 35301780

Lahore Office

Shop # G-009, Ground Floor,
Packages Mall
Tel: (+92-42) 38303560-69
Fax: (+92-42) 38303559

Islamabad Office

3rd Floor, Kamran Centre,
Block- B, Jinnah Avenue, Blue Area
Tel: (+92-51) 2604861-2, 2604864,
2273439
Fax: (+92-51) 2273861

Faisalabad Office

Office No. 2, 5 & 8, Ground Floor, The
Regency International 949, The Mall
Faisalabad
Tel: (+92-41) 2540843-45

Rahim Yar Khan Office

Plot # 12, Basement of Khalid Market,
Model Town, Town Hall Road
Tel: (+92-68) 5871652-3
Fax: (+92-68) 5871651

Multan Office

Mezzanine Floor, Abdali Tower,
Abdali Road
Tel: (92-61) 4512003, 4571183