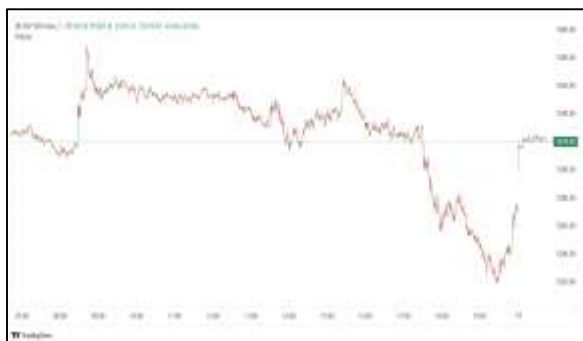


# Commodities and Indices Market View

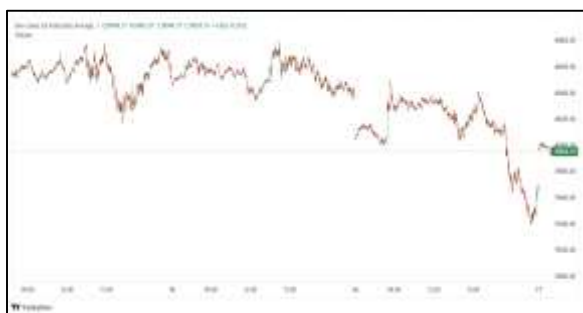
Wednesday, June 24, 2026



## Technicals



S&P 500	RSI (20:80)	Sto Fast
	46.22	61.44% 55.87%



Dow Jones	RSI (20:80)	Sto Fast
	59.56	71.32% 73.31%

## US Stock Market

DJIA	S&P 500	NASDAQ
51,666.84	7,365.46	25,587.04
-0.09%	-1.44%	-2.21%

The Nasdaq and the S&P 500 closed at more than one-week lows on Tuesday, dragged down by sharp losses in semiconductor stocks as investors scrutinized growing debt-funded AI spending and braced for a more hawkish U.S. Federal Reserve. The Dow ended slightly lower.

The Dow Jones Industrial Average (.DJI), fell 47.22 points, or 0.09%, to 51,665.49, the S&P 500 (.SPX), lost 107.32 points, or 1.44%, to 7,365.47 and the Nasdaq Composite (.IXIC), lost 579.56 points, or 2.21%, to 25,587.04.

Declining issues outnumbered advancers by a 1.31-to-1 ratio on the NYSE. There were 120 new highs and 187 new lows on the NYSE.

On the Nasdaq, 2,181 stocks rose and 2,636 fell as declining issues outnumbered advancers by a 1.21-to-1 ratio.

The S&P 500 posted 12 new 52-week highs and five new lows while the Nasdaq Composite recorded 132 new highs and 182 new lows.

Volume on U.S. exchanges was 24.1 billion shares, compared with the 22.53 billion average for the full session over the last 20 trading days.

## Major Economic Releases for Today

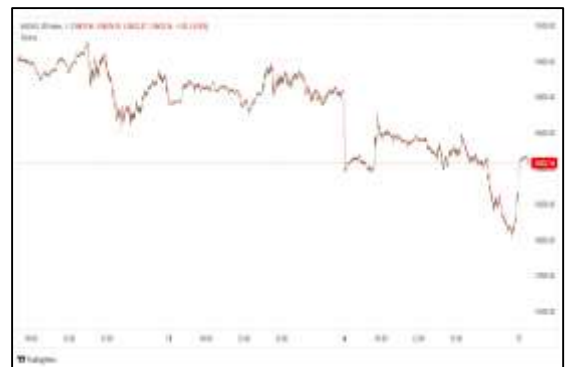
Period	Event	GMT	Forecast	Previous
JUN	Interest Rate Projections - 1st year	11:00	--	3.10%
JUN	Interest Rate Projections - 2nd year	11:00	--	3.10%
JUN	Interest Rate Projections - Current	11:00	--	3.40%
JUN	Interest Rate Projections - Longer	11:00	--	3.10%
JUN	Retail Sales (MoM)	5:30	0.50%	0.50%

## Dow Jones Industrial Average

At the close in NYSE, the Dow Jones Industrial Average declined 0.09%. The best performers of the session on the Dow Jones Industrial Average were International Business Machines (NYSE:IBM), which rose 5.04% or 12.72 points to trade at 264.94 at the close. Meanwhile, Merck & Company Inc (NYSE:MRK) added 3.54% or 4.09 points to end at 119.57 and Johnson & Johnson (NYSE:JNJ) was up 3.36% or 7.78 points to 239.07 in late trade.



The worst performers of the session were NVIDIA Corporation (NASDAQ:NVDA), which fell 4.15% or 8.65 points to trade at 200.00 at the close. Caterpillar Inc (NYSE:CAT) declined 3.73% or 38.08 points to end at 984.20 and Honeywell International Inc (NASDAQ:HON) was down 2.50% or 5.71 points to 222.40.



## NASDAQ 100

At the close in NYSE, the NASDAQ Composite index declined 2.22%. The top performers on the NASDAQ Composite were Atlantic International Corp (NASDAQ:ATLN) which rose 202.41% to 1.33, Aditx Therapeutics Inc (NASDAQ:ADTX) which was up 117.19% to settle at 0.04 and Focus Universal Inc (NASDAQ:FCUV) which gained 89.23% to close at 4.11.



The worst performers were Nexentis Technologies Inc (NASDAQ:NXTS) which was down 55.31% to 5.81 in late trade, Triller Group Inc (NASDAQ:ILLR) which lost 50.49% to settle at 0.73 and INLIF Ltd (NASDAQ:INLF) which was down 49.28% to 0.06 at the close.

## OIL

Oil prices fell on Wednesday, extending this week's losses and trading near four-month lows hit in the previous session, on signs that more oil tankers stranded in the Gulf since the start of the Iran war are set to move out of the Strait of Hormuz.



Brent crude futures were down 37 cents, or 0.5%, at \$76.71 a barrel as of 0043 GMT, and U.S. West Texas Intermediate slipped 36 cents, or 0.5%, to \$72.85 a barrel.

## Precious and Base Metals

Gold extended losses on Wednesday, touching its lowest level in almost two weeks as the dollar climbed amid rising bets on U.S. interest rate hikes, while investors assessed conflicting signals on the U.S.-Iran peace talks.

Spot gold fell 1% to \$4,067.51 per ounce by 0236 GMT, having earlier hit its lowest level since June 11. U.S. gold futures for August delivery declined 1.6% to \$4,083.90.

While gold is traditionally seen as an inflation hedge, it loses its appeal as a non-yielding asset in a high-interest-rate environment.

Spot silver fell 0.9% to \$61.44 per ounce, platinum lost 0.8% to \$1,638, and palladium was down 0.8% at \$1,227.41.



## Traditional Agricultures

Soybeans closed mixed on Tuesday, with front months steady to 1 ½ cents higher and deferreds up 1 to down 1 ¼ cents. The cmdtyView national average Cash Bean price was up 1 1/2 cents at \$10.66 ¾.

Corn futures were mixed on Tuesday, with nearbys through September 2027 down 1 to 2 ¼ cents lower and deferreds fractionally to 2 ¼ cents higher. The CmdtyView national average Cash Corn price was down 1 3/4 cents at \$3.79 1/4.

The wheat complex was pressure across the three markets on Tuesday, with spring wheat leading the bears. Chicago SRW contracts were 8 1/4 to 10 3/4 cents in the red at the close. KC HRW futures posted 13 to 15 1/4 cent losses across the board. MPLS spring wheat was 14 to 24 3/4 cents to lead the bears.



**Future Settlement Price Wednesday, June 24th, 2026**

Instrument	Last	Net Change	High	Low	Volume
S & P 500	7,447.50	10.00	7,459.75	7,420.25	84,157.00
NASDAQ 100	29,748.00	82.00	29,891.75	29,585.50	66,076.00
Dow Jones	52,068.00	-14.00	52,125.00	51,970.00	5,594.00
Gold	4,077.50	-71.90	4,132.40	4,067.00	25,008.00
Silver	61.49	-0.59	62.09	60.75	9,881.00
Copper	6.21	-0.22	6.43	6.17	33,491.00
Crude Oil	72.34	-0.87	73.18	72.07	12,767.00
Platinum	1,662.00	-10.20	1,682.60	1,621.10	18,562.00
Palladium	1,243.90	-27.00	1,282.50	1,226.00	4,100.00
Natural Gas	3.18	-0.01	3.21	3.18	2,251.00
Wheat	595-0	-2.00	598-2	594-4	2,188.00
Soy Beans	1141-6	0.00	1144-6	1140-4	3,210.00
Corn	437-2	0.00	438-2	436-6	3,977.00

**Daily Swings (The Pivot Levels)**

Instrument	Trading Range						
	S3	S2	S1	Pivot	R1	R2	R3
Dow Jones	51,216.65	51,385.92	51,549.31	51,718.58	51,881.97	52,051.24	52,214.63
S & P 500	7,375.19	7,417.60	7,445.19	7,487.60	7,515.19	7,557.60	7,585.19
NASDAQ 100	29,698.37	29,946.31	30,146.69	30,394.63	30,595.01	30,842.95	31,043.33
Gold	3,953.94	4,025.97	4,071.16	4,143.19	4,188.38	4,260.41	4,305.60
Silver	55.55	58.20	59.94	62.59	64.33	66.98	68.72
Copper	6.11	6.19	6.34	6.20	6.29	6.45	6.54
Crude Oil	91.86	94.01	96.05	73.16	73.82	74.96	75.62
Platinum	1,566.76	1,594.03	1,622.01	1,649.2	1,677.26	1,704.53	1,732.51
Palladium	1,164.25	1,195.25	1,216.00	1,247.0	1,267.75	1,298.75	1,319.50
Natural Gas	3.00	3.09	3.14	3.22	3.28	3.36	3.41
Wheat	606.95	613.41	626.33	602.16	607.72	617.19	622.75
Cotton	81.27	82.76	85.27	78.53	79.65	80.56	81.68
Corn	467.49	469.44	472.22	410.59	413.80	417.61	420.83

**Source:** - News & Quotes (Reuters, Investing, Bloomberg, FXStreet, Barchart)

**Disclaimer:** This document has been prepared by IGI Finex Securities Limited and is for information purposes only. Whilst every effort has been made to ensure that all the information (including any recommendations or opinions expressed) contained in this document (the information) is not misleading or unreliable, IGI Finex Securities Limited makes no representation as to the accuracy or completeness of the information. Neither IGI Finex Securities Limited nor any director, officer or employee of IGI Finex Securities Limited shall in any manner be liable or responsible for any loss that may be occasioned as consequence of a party relying on the information. This document takes no account of the investment objectives, financial situation and particular needs of investors, who shall seek further professional advice before making any investment decision. This document and the information may not be reproduced, distributed or published by any recipient for any purpose.

# Contact Details

## Commodity Team

Zaeem Haider Khan	Head of Commodities	Tel: (+92-21) 35301405	zaeem.haider@igi.com.pk
Shakeel Ahmad	Branch Manager – Faisalabad	Tel: (+92-41) 2540843-45	shakeel.ahmad1@igi.com.pk
Ehsan Ul Haq	Trader – Lahore	Tel: (+92-42) 3830559-68	ehsan.haq@igi.com.pk
Dil Muhammad	Trader – Lahore	Tel: (+92-41) 2540843-45	dil.muhammad@igi.com.pk
Inamullah Shakir	Trader – Islamabad	Tel: (+92-21) 32429613-14	inam.ullah@igi.com.pk
Sheikh Muhammad Imran	Trader – Karachi	Tel: (+92-21) 35301684	imran.ahmed@igi.com.pk
Asif Saleem	Branch Manager – Rahim Yar Khan	Tel: (+92-68) 5871652-6	asif.saleem@igi.com.pk
Mahtab Ali	Branch Manager – Multan	Tel: (+92-61) 4512003	mahtab.ali@igi.com.pk

## Research Team

Abdullah Farhan	Head of Research	Tel: (+92-21) 111-234-234 Ext: 912	abdullah.farhan@igi.com.pk
Sakina Makati	Research Analyst	Tel: (+92-21) 111-234-234 Ext: 810	sakina.makati@igi.com.pk
Syed Muzammil Hassan Rizvi	Research Analyst	Tel: (+92-21) 111-234-234 Ext: 569	muzammil.rizvi@igi.com.pk
Sufyan Siddiqui	Database Officer	Tel: (+92-21) 111-234-234 Ext: 888	sufyan.siddiqui@igi.com.pk

## IGI Finex Securities Limited

Trading Rights Entitlement Certificate (TREC) Holder of Pakistan Stock Exchange Limited |  
Corporate member of Pakistan Mercantile Exchange Limited  
Website: [www.igisecurities.com.pk](http://www.igisecurities.com.pk)

### Head Office

Suite No 701-713, 7th Floor, The Forum, G-20,  
Khayaban-e-Jami Block-09, Clifton, Karachi-75600  
UAN: (+92-21) 111-444-001 | (+92-21) 111-234-234  
Fax: (+92-21) 35309169, 35301780

### Lahore Office

Shop # G-009, Ground Floor,  
Packages Mall  
Tel: (+92-42) 38303560-69  
Fax: (+92-42) 38303559

### Islamabad Office

3<sup>rd</sup> Floor, Kamran Centre,  
Block- B, Jinnah Avenue, Blue Area  
Tel: (+92-51) 2604861-2, 2604864,  
2273439  
Fax: (+92-51) 2273861

### Faisalabad Office

Office No. 2, 5 & 8, Ground Floor, The  
Regency International 949, The Mall  
Faisalabad  
Tel: (+92-41) 2540843-45

### Rahim Yar Khan Office

Plot # 12, Basement of Khalid Market,  
Model Town, Town Hall Road  
Tel: (+92-68) 5871652-3  
Fax: (+92-68) 5871651

### Multan Office

Mezzanine Floor, Abdali Tower,  
Abdali Road  
Tel: (92-61) 4512003, 4571183