

# Commodities and Indices Market View

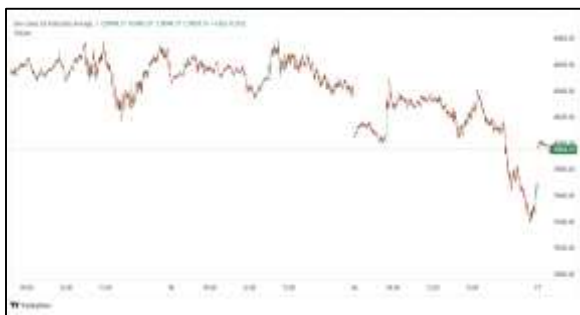
Wednesday, April 29, 2026



## Technicals



S&P 500	RSI (20:80)	Sto Fast
	67.39	96.90% 96.26%



Dow Jones	RSI (20:80)	Sto Fast
	61.93	80.21% 74.56%

## US Stock Market

DJIA	S&P 500	NASDAQ
49,141.93	7,138.80	24,663.80
-0.05%	-0.49%	-0.90%

U.S. stocks closed lower on Tuesday, backing away from record closing highs as renewed concerns over the artificial intelligence boom weighed on technology stocks days before five of the sector's most high-profile companies were due to post quarterly results.

The Dow Jones Industrial Average (.DJI), fell 25.86 points, or 0.05%, to 49,141.93, the S&P 500 (.SPX), lost 35.11 points, or 0.49%, to 7,138.80 and the Nasdaq Composite (.IXIC), lost 223.30 points, or 0.90%, to 24,663.80.

Declining issues outnumbered advancers by a 1.66-to-1 ratio on the NYSE. There were 179 new highs and 42 new lows on the NYSE.

On the Nasdaq, 1,707 stocks rose and 3,004 fell as declining issues outnumbered advancers by a 1.76-to-1 ratio.

The S&P 500 posted three new 52-week highs and 14 new lows while the Nasdaq Composite recorded 104 new highs and 95 new lows.

Volume on U.S. exchanges was 15.48 billion shares, compared with the 18.11 billion average for the full session over the last 20 trading days.

## Major Economic Releases for Today

Period	Event	GMT	Forecast	Previous
APR	Consumer Price Index (MoM)	5:00	0.60%	1.10%
APR	Consumer Price Index (YoY)	5:00	3.00%	2.70%
APR	Harmonized Index of Consumer Prices (MoM)	5:00	0.70%	1.20%
APR	Harmonized Index of Consumer Prices (YoY)	5:00	3.00%	2.80%
APR	BoC Interest Rate Decision	6:45	2.25%	2.25%

## Dow Jones Industrial Average

At the close in NYSE, the Dow Jones Industrial Average declined 0.06%. The best performers of the session on the Dow Jones Industrial Average were Coca-Cola Co (NYSE:KO), which rose 3.86% or 2.91 points to trade at 78.35 at the close. Meanwhile, Unitedhealth Group (NYSE:UNH) added 3.41% or 12.08 points to end at 366.77 and International Business Machines (NYSE:IBM) was up 2.19% or 4.99 points to 233.04 in late trade.

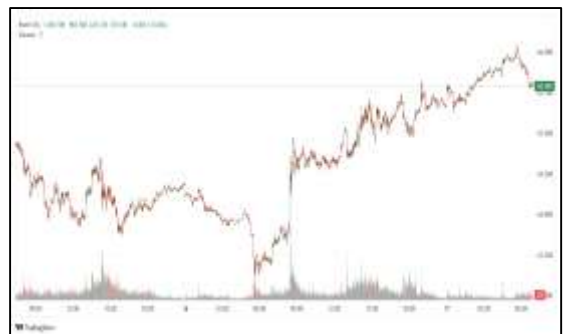


The worst performers of the session were Sherwin-Williams Co (NYSE:SHW), which fell 3.52% or 11.83 points to trade at 324.27 at the close. NVIDIA Corporation (NASDAQ:NVDA) declined 1.61% or 3.48 points to end at 213.13 and Cisco Systems Inc (NASDAQ:CSCO) was down 1.59% or 1.40 points to 86.86.



## NASDAQ 100

At the close in NYSE, the NASDAQ Composite index declined 0.90%. The top performers on the NASDAQ Composite were Baiya International Group Inc (NASDAQ:BIYA) which rose 96.53% to 1.53, Aterian Inc (NASDAQ:ATER) which was up 70.60% to settle at 1.12 and Sports Entertainment Gaming Global Corp (NASDAQ:SEGG) which gained 56.40% to close at 1.46.



The worst performers were High Trend International Group (NASDAQ:HTCO) which was down 78.83% to 8.09 in late trade, Soligenix Inc (NASDAQ:SNGX) which lost 70.25% to settle at 0.42 and Erasca Inc (NASDAQ:ERAS) which was down 48.30% to 9.90 at the close.

## OIL

Oil prices eased on Wednesday from a multi-day rally as investors digested the ramifications of the United Arab Emirates' surprise decision to quit OPEC, though supply disruptions from the stalemated Iran war support the market.



Brent crude futures for June dipped 1 cent to \$111.25 a barrel by 0413 GMT, having climbed for previous seven sessions. The June contract expires on Thursday and the more active July contract down 28 cents at \$104.12.

## Precious and Base Metals

Gold was largely steady in choppy trade on Wednesday as investors awaited U.S. Federal Reserve Chair Jerome Powell's comments to gauge the impact of the Iran war on the economy amid stalled peace talks.

Spot gold was up 0.1% at \$4,597.07 per ounce, as of 0243 GMT, after falling to its lowest level since April 2 in the previous session. U.S. gold futures for June delivery were steady at \$4,610.20.

While gold is considered an inflation hedge, high interest rates make yield-bearing assets more attractive, weighing on bullion's appeal.

Spot silver rose 0.8% to \$73.64 per ounce, platinum fell 0.4% to \$1,930, and palladium was down 0.4% at \$1,453.91.



## Traditional Agricultures

Soybeans closed the Tuesday session with front months down 1 to 4 ¼ cents in the front months and fractionally to 1 ¼ cents higher in the deferreds. The cmdtyView national average Cash Bean price was down 1 1/4 cents at \$11.15.

Corn futures closed the Tuesday session with contracts 3 ¼ to 6 ½ cents higher, as spillover support from the wheat market is supportive. The CmdtyView national average Cash Corn price was up 7 cents at \$4.32 1/4.

The wheat complex posted a double digit rally across the three exchanges on Tuesday. Chicago SRW futures were 17 to 28 1/4 cents higher on Tuesday. KC HRW futures were up 18 to 29 ½ cents across most contracts. MPLS spring wheat was 12 1/2 to 21 1/2 cents higher across the board.



**Future Settlement Price Wednesday, April 29th, 2026**

Instrument	Last	Net Change	High	Low	Volume
S & P 500	7,184.75	13.75	7,188.00	7,169.00	41,380.00
NASDAQ 100	27,298.00	129.25	27,312.25	27,191.75	36,638.00
Dow Jones	49,381.00	84.00	49,417.00	49,340.00	3,318.00
Gold	4,616.90	8.50	4,624.30	4,589.10	16,069.00
Silver	74.26	0.52	74.36	73.27	4,066.00
Copper	5.97	-0.11	6.10	5.93	54,053.00
Crude Oil	99.65	-0.28	100.74	98.42	25,708.00
Platinum	1,958.80	-38.80	2,012.50	1,917.40	12,664.00
Palladium	1,469.70	-16.70	1,489.00	1,434.50	3,728.00
Natural Gas	2.67	-0.02	2.69	2.66	3,216.00
Wheat	655-0	-8.00	661-4	653-2	8,183.00
Soy Beans	1191-2	2.00	1192-6	1187-0	8,242.00
Corn	475-4	-4.00	476-4	474-0	17,251.00

**Daily Swings (The Pivot Levels)**

Instrument	Trading Range						
	S3	S2	S1	Pivot	R1	R2	R3
Dow Jones	48,689.39	48,859.43	49,013.61	49,183.65	49,337.83	49,507.87	49,662.05
S & P 500	7,122.16	7,134.44	7,154.18	7,166.46	7,186.20	7,198.48	7,218.22
NASDAQ 100	27,048.27	27,103.57	27,204.63	27,259.93	27,360.99	27,416.29	27,517.34
Gold	4,397.65	4,482.70	4,546.25	4,631.30	4,694.85	4,779.90	4,843.45
Silver	67.19	69.56	71.41	73.78	75.64	78.01	79.86
Copper	5.74	5.84	5.91	6.00	6.08	6.17	6.24
Crude Oil	90.98	93.62	96.53	99.17	102.08	104.72	107.63
Platinum	1,815.20	1,866.55	1,909.85	1,961.2	2,004.50	2,055.85	2,099.15
Palladium	1,387.75	1,411.50	1,441.50	1,465.2	1,495.25	1,519.00	1,549.00
Natural Gas	2.26	2.47	2.57	2.78	2.89	3.10	3.28
Wheat	603.80	615.40	636.20	647.80	668.60	680.20	701.00
Cotton	77.58	78.24	78.96	79.62	80.34	81.00	81.72
Corn	463.78	466.33	470.53	473.08	477.28	479.83	484.03

**Source:** - News & Quotes (Reuters, Investing, Bloomberg, FXStreet, Barchart)

**Disclaimer:** This document has been prepared by IGI Finex Securities Limited and is for information purposes only. Whilst every effort has been made to ensure that all the information (including any recommendations or opinions expressed) contained in this document (the information) is not misleading or unreliable, IGI Finex Securities Limited makes no representation as to the accuracy or completeness of the information. Neither IGI Finex Securities Limited nor any director, officer or employee of IGI Finex Securities Limited shall in any manner be liable or responsible for any loss that may be occasioned as consequence of a party relying on the information. This document takes no account of the investment objectives, financial situation and particular needs of investors, who shall seek further professional advice before making any investment decision. This document and the information may not be reproduced, distributed or published by any recipient for any purpose.

# Contact Details

## Commodity Team

Zaeem Haider Khan	Head of Commodities	Tel: (+92-21) 35301405	zaeem.haider@igi.com.pk
Shakeel Ahmad	Branch Manager – Faisalabad	Tel: (+92-41) 2540843-45	shakeel.ahmad1@igi.com.pk
Ehsan Ul Haq	Trader – Lahore	Tel: (+92-42) 3830559-68	ehsan.haq@igi.com.pk
Dil Muhammad	Trader – Lahore	Tel: (+92-41) 2540843-45	dil.muhammad@igi.com.pk
Inamullah Shakir	Trader – Islamabad	Tel: (+92-21) 32429613-14	inam.ullah@igi.com.pk
Sheikh Muhammad Imran	Trader – Karachi	Tel: (+92-21) 35301684	imran.ahmed@igi.com.pk
Asif Saleem	Branch Manager – Rahim Yar Khan	Tel: (+92-68) 5871652-6	asif.saleem@igi.com.pk
Mahtab Ali	Branch Manager – Multan	Tel: (+92-61) 4512003	mahtab.ali@igi.com.pk

## Research Team

Abdullah Farhan	Head of Research	Tel: (+92-21) 111-234-234 Ext: 912	abdullah.farhan@igi.com.pk
Sakina Makati	Research Analyst	Tel: (+92-21) 111-234-234 Ext: 810	sakina.makati@igi.com.pk
Syed Muzammil Hassan Rizvi	Research Analyst	Tel: (+92-21) 111-234-234 Ext: 569	muzammil.rizvi@igi.com.pk
Sufyan Siddiqui	Database Officer	Tel: (+92-21) 111-234-234 Ext: 888	sufyan.siddiqui@igi.com.pk

## IGI Finex Securities Limited

Trading Rights Entitlement Certificate (TREC) Holder of Pakistan Stock Exchange Limited |  
Corporate member of Pakistan Mercantile Exchange Limited  
Website: [www.igisecurities.com.pk](http://www.igisecurities.com.pk)

### Head Office

Suite No 701-713, 7th Floor, The Forum, G-20,  
Khayaban-e-Jami Block-09, Clifton, Karachi-75600  
UAN: (+92-21) 111-444-001 | (+92-21) 111-234-234  
Fax: (+92-21) 35309169, 35301780

### Lahore Office

Shop # G-009, Ground Floor,  
Packages Mall  
Tel: (+92-42) 38303560-69  
Fax: (+92-42) 38303559

### Islamabad Office

3<sup>rd</sup> Floor, Kamran Centre,  
Block- B, Jinnah Avenue, Blue Area  
Tel: (+92-51) 2604861-2, 2604864,  
2273439  
Fax: (+92-51) 2273861

### Faisalabad Office

Office No. 2, 5 & 8, Ground Floor, The  
Regency International 949, The Mall  
Faisalabad  
Tel: (+92-41) 2540843-45

### Rahim Yar Khan Office

Plot # 12, Basement of Khalid Market,  
Model Town, Town Hall Road  
Tel: (+92-68) 5871652-3  
Fax: (+92-68) 5871651

### Multan Office

Mezzanine Floor, Abdali Tower,  
Abdali Road  
Tel: (92-61) 4512003, 4571183