

Commodities and Indices Market View

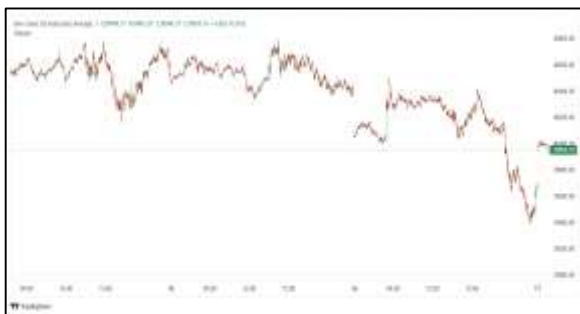
Monday, June 29, 2026



Technicals



S&P 500	RSI (20:80)	Sto Fast
	45.50	38.26% 34.80%



Dow Jones	RSI (20:80)	Sto Fast
	61.12	76.41% 75.54%

US Stock Market

DJIA	S&P 500	NASDAQ
51,876.11	7,354.02	25,297.62
-0.09%	-0.05%	-0.24%

The S&P 500 ended marginally lower on Friday, with a steep drop in AI-related chip stocks and sharp gains in Moderna and other healthcare stocks.

Eight of the 11 S&P 500 sector indexes declined, led lower by industrials (.SPLRCI), down 3.41%, followed by a 2.45% loss in materials (.SPLRCM).

The S&P 500 declined 0.05% to end the session at 7,353.95 points. The Nasdaq declined 0.24% to 25,297.62 points, while the Dow Jones Industrial Average declined 0.09% to 51,876.11 points. For the week, the S&P 500 fell 2.05% and the Nasdaq lost 4.7%.

Advancing issues outnumbered falling ones within the S&P 500 (.AD.SPX), by a 1.8-to-one ratio.

The S&P 500 posted 35 new highs and 5 new lows; the Nasdaq recorded 263 new highs and 169 new lows.

Volume on U.S. exchanges was relatively heavy, with 30.1 billion shares traded, compared with an average of 23.1 billion shares over the previous 20 sessions.

Major Economic Releases for Today

Period	Event	GMT	Forecast	Previous
JUNE	Consumer Price Index (MoM)	5:00	0.10%	-0.20%
JUNE	Consumer Price Index (YoY)	5:00	2.50%	2.60%
JUNE	Harmonized Index of Consumer Prices (MoM)	5:00	--	-0.10%
JUNE	Harmonized Index of Consumer Prices (YoY)	5:00	2.70%	2.70%
JUNE	Building Permits (MoM)	6:30	1.10%	-3.40%

Dow Jones Industrial Average

At the close in NYSE, the Dow Jones Industrial Average declined 0.11%. The best performers of the session on the Dow Jones Industrial Average were Microsoft Corporation (NASDAQ:MSFT), which rose 5.71% or 20.14 points to trade at 372.97 at the close. Meanwhile, Salesforce Inc (NYSE:CRM) added 5.45% or 8.18 points to end at 158.37 and International Business Machines (NYSE:IBM) was up 5.17% or 13.36 points to 271.63 in late trade.

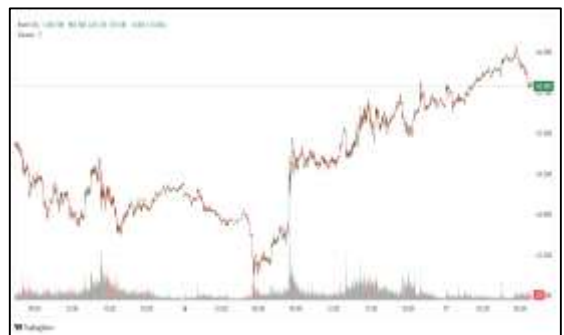


The worst performers of the session were Caterpillar Inc (NYSE:CAT), which fell 5.58% or 58.99 points to trade at 998.02 at the close. Cisco Systems Inc (NASDAQ:CSCO) declined 4.46% or 5.31 points to end at 113.66 and Goldman Sachs Group Inc (NYSE:GS) was down 4.37% or 46.59 points to 1,018.50.



NASDAQ 100

At the close in NYSE, the NASDAQ Composite index fell 0.24%. The top performers on the NASDAQ Composite were Sadot Group Inc (NASDAQ:SDOT) which rose 247.09% to 21.45, Picocela Inc ADR (NASDAQ:PCLA) which was up 111.25% to settle at 6.59 and INVO Fertility Inc (NASDAQ:IVF) which gained 97.58% to close at 2.45.



The worst performers were PS International Group Ltd (NASDAQ:PSIG) which was down 87.71% to 1.45 in late trade, Creative Medical Technology Holdings Inc (NASDAQ:CELZ) which lost 40.00% to settle at 1.20 and Lichen China Ltd (NASDAQ:LICN) which was down 38.92% to 1.02 at the close.

OIL

Oil prices rose on Monday following days of tit-for-tat strikes by the U.S. and Iran that underscored the fragility of their interim peace deal and again slowed energy shipping through the Strait of Hormuz.



Brent crude futures climbed 58 cents, or 0.8%, to \$72.57 a barrel at 0207 GMT while U.S. West Texas Intermediate crude was at \$70.11 a barrel, up 88 cents, or 1.3%.

Precious and Base Metals

Gold prices eased on Monday as recent U.S.-Iran strikes in the Gulf pushed oil prices higher, while expectations of U.S. Federal Reserve interest rate hikes further weighed on the non-yielding metal.

Spot gold was down 0.7% at \$4,061.35 per ounce, as of 0242 GMT. U.S. gold futures for August delivery lost 0.5% to \$4,076.40. The metal was headed for a fourth consecutive monthly loss of 10.4%.

Bullion loses appeal in a high-interest-rate environment as it is a non-yielding asset.

Spot silver fell 1.1% to \$58.51 per ounce, while platinum gained 1% to \$1,630.13, and palladium rose 0.8% at \$1,218.92.



Traditional Agricultures

Soybeans closed the Friday session with contracts steady to 1 ½ cents lower, as September was ¼ cent higher. July options expired today, with FND on Tuesday. The cmdtyView national average Cash Bean price is down 2 1/2 cents at \$10.76 1/4.

Corn futures closed the Friday session mixed, with front months down ½ to 2 cents and deferred contracts for the 2027 crop steady to a penny higher. July options expired today, with first notice day on Tuesday.

The wheat complex posted losses across most contracts on Friday. Chicago SRW contracts were down 9 to 12 3/4 cents in the front months, with July 27 ½ cents lower on the week. KC HRW futures were 9 to 11 ¾ cents in the red on Friday, with the weekly loss for July at 33 cents. MPLS spring wheat was 8 ½ to 11 ¾ cents lower on the day, with the weekly mode of 47 ½ cents lower.



Future Settlement Price Monday, June 29th, 2026

Instrument	Last	Net Change	High	Low	Volume
S & P 500	7,443.50	41.75	7,455.75	7,398.00	79,039.00
NASDAQ 100	29,542.00	173.75	29,683.25	29,280.25	64,209.00
Dow Jones	52,350.00	141.00	52,450.00	52,179.00	5,861.00
Gold	4,077.10	-19.20	4,102.90	4,062.60	18,192.00
Silver	58.94	-0.74	59.93	58.49	4,825.00
Copper	6.21	0.07	6.24	6.02	46,469.00
Crude Oil	70.08	0.85	70.97	69.32	18,841.00
Platinum	1,647.30	28.50	1,654.70	1,576.20	15,541.00
Palladium	1,220.40	27.20	1,225.00	1,165.00	4,003.00
Natural Gas	3.30	0.02	3.31	3.28	4,177.00
Wheat	589-2	-4.00	593-4	586-0	3,504.00
Soy Beans	1148-2	-8.00	1155-2	1147-4	10,696.00
Corn	436-4	-5.00	441-0	436-0	20,741.00

Daily Swings (The Pivot Levels)

Instrument	Trading Range						
	S3	S2	S1	Pivot	R1	R2	R3
Dow Jones	50,835.84	51,346.81	51,633.72	52,144.69	52,431.60	52,942.57	53,229.48
S & P 500	7,218.72	7,271.11	7,314.30	7,366.69	7,409.88	7,462.27	7,505.46
NASDAQ 100	28,169.29	28,584.92	29,012.63	29,428.26	29,855.97	30,271.60	30,699.30
Gold	4,026.45	4,046.20	4,061.60	4,081.35	4,096.75	4,116.50	4,131.90
Silver	57.67	58.07	58.34	58.74	59.02	59.42	59.69
Copper	6.16	6.17	6.18	6.19	6.20	6.21	6.22
Crude Oil	68.22	68.94	69.35	70.07	70.48	71.20	71.61
Platinum	1,607.31	1,615.78	1,621.21	1,629.6	1,635.11	1,643.58	1,649.01
Palladium	1,194.50	1,200.75	1,205.50	1,211.7	1,216.50	1,222.75	1,227.50
Natural Gas	3.25	3.27	3.28	3.29	3.31	3.32	3.33
Wheat	567.09	575.92	582.84	591.67	598.59	607.42	614.34
Cotton	73.92	74.71	75.55	76.34	77.18	77.97	78.81
Corn	403.91	407.58	410.16	413.83	416.41	420.08	422.66

Source: - News & Quotes (Reuters, Investing, Bloomberg, FXStreet, Barchart)

Disclaimer: This document has been prepared by IGI Finex Securities Limited and is for information purposes only. Whilst every effort has been made to ensure that all the information (including any recommendations or opinions expressed) contained in this document (the information) is not misleading or unreliable, IGI Finex Securities Limited makes no representation as to the accuracy or completeness of the information. Neither IGI Finex Securities Limited nor any director, officer or employee of IGI Finex Securities Limited shall in any manner be liable or responsible for any loss that may be occasioned as consequence of a party relying on the information. This document takes no account of the investment objectives, financial situation and particular needs of investors, who shall seek further professional advice before making any investment decision. This document and the information may not be reproduced, distributed or published by any recipient for any purpose.

Contact Details

Commodity Team

Zaeem Haider Khan	Head of Commodities	Tel: (+92-21) 35301405	zaeem.haider@igi.com.pk
Shakeel Ahmad	Branch Manager – Faisalabad	Tel: (+92-41) 2540843-45	shakeel.ahmad1@igi.com.pk
Ehsan Ul Haq	Trader – Lahore	Tel: (+92-42) 3830559-68	ehsan.haq@igi.com.pk
Dil Muhammad	Trader – Lahore	Tel: (+92-41) 2540843-45	dil.muhammad@igi.com.pk
Inamullah Shakir	Trader – Islamabad	Tel: (+92-21) 32429613-14	inam.ullah@igi.com.pk
Sheikh Muhammad Imran	Trader – Karachi	Tel: (+92-21) 35301684	imran.ahmed@igi.com.pk
Asif Saleem	Branch Manager – Rahim Yar Khan	Tel: (+92-68) 5871652-6	asif.saleem@igi.com.pk
Mahtab Ali	Branch Manager – Multan	Tel: (+92-61) 4512003	mahtab.ali@igi.com.pk

Research Team

Abdullah Farhan	Head of Research	Tel: (+92-21) 111-234-234 Ext: 912	abdullah.farhan@igi.com.pk
Sakina Makati	Research Analyst	Tel: (+92-21) 111-234-234 Ext: 810	sakina.makati@igi.com.pk
Syed Muzammil Hassan Rizvi	Research Analyst	Tel: (+92-21) 111-234-234 Ext: 569	muzammil.rizvi@igi.com.pk
Sufyan Siddiqui	Database Officer	Tel: (+92-21) 111-234-234 Ext: 888	sufyan.siddiqui@igi.com.pk

IGI Finex Securities Limited

Trading Rights Entitlement Certificate (TREC) Holder of Pakistan Stock Exchange Limited |
Corporate member of Pakistan Mercantile Exchange Limited
Website: www.igisecurities.com.pk

Head Office

Suite No 701-713, 7th Floor, The Forum, G-20,
Khayaban-e-Jami Block-09, Clifton, Karachi-75600
UAN: (+92-21) 111-444-001 | (+92-21) 111-234-234
Fax: (+92-21) 35309169, 35301780

Lahore Office

Shop # G-009, Ground Floor,
Packages Mall
Tel: (+92-42) 38303560-69
Fax: (+92-42) 38303559

Islamabad Office

3rd Floor, Kamran Centre,
Block- B, Jinnah Avenue, Blue Area
Tel: (+92-51) 2604861-2, 2604864,
2273439
Fax: (+92-51) 2273861

Faisalabad Office

Office No. 2, 5 & 8, Ground Floor, The
Regency International 949, The Mall
Faisalabad
Tel: (+92-41) 2540843-45

Rahim Yar Khan Office

Plot # 12, Basement of Khalid Market,
Model Town, Town Hall Road
Tel: (+92-68) 5871652-3
Fax: (+92-68) 5871651

Multan Office

Mezzanine Floor, Abdali Tower,
Abdali Road
Tel: (92-61) 4512003, 4571183