

Fund Select

Friday, 20 September 2019



August 2019

Fund Select

Monthly AUMs of mutual fund industry increased by PKR 5.5bn to PKR 547.4bn

- As per data available at Mutual Funds of Pakistan (MUFAP) Asset Under Management (AUM)s of the industry increased by PKR 5.5bn (1.01% to PKR 547.43bn for the month of August 2019.
- AMC wise, in absolute terms Alfalah GHP Investment Management Limited witnessed the largest increase of PKR 7.8 bn to PKR 38.3bn.
- Asset Class, Money Market witnessed the largest increase of PKR 20.29 bn to PKR 211.6bn. While Equity witnessed a decline of PKR 19.17 bn to PKR 139.8bn.
- E&Ps sector remained top pick of the mutual fund, while script wise OGDC followed by ENGRO and PPL respectively were top preferred invested companies

Monthly AUMs of the industry increased by +1% (or PKR 5.5bn) to PKR 547.4bn

As per data available at Mutual Funds of Pakistan (MUFAP) Asset Under Management (AUM)s of the industry increased by PKR 5.5bn (1.01% to PKR 547.43bn for the month of August 2019.

Conventional fund size for the month increased by PKR 5.2bn to PKR 336.2bn or (1.6%), while Shariah Compliant fund size increased by PKR 0.3bn or (0.1%) to PKR 211.3bn.

By Asset Management Company (AMC) wise, in absolute terms Alfalah GHP Investment Management Limited witnessed the largest increase of PKR 7.8 bn to PKR 38.3bn. While National Investment Trust Limited witnessed a decline of PKR 3.15 bn to PKR 58.4bn.

Asset Class wise, Money Market witnessed the largest increase of PKR 20.29 bn to PKR 211.6bn. While Equity witnessed a decline of PKR 19.17 bn to PKR 139.8bn.

Exhibit: Asset Under Management

PKRbn	Aug-19	Share	Jul-19	Abs. Growth		Growth	
				m/m	y/y	m/m	y/y
Open Ended Funds	522.8	95.5%	516.5	6.2	-68.3	1%	-12%
VPS	24.6	4.5%	25.4	-0.7	-1.9	-3%	-7%
Conventional	336.2	64.3%	330.9	5.2	-54.0	2%	-14%
Shariah Compliant	211.3	40.4%	211.0	0.3	-16.2	0%	-7%
Money Market	211.6	38.6%	191.3	20.3	65.3	11%	45%
Equity	139.8	25.5%	159.0	-19.2	-110.5	-12%	-44%
Income	125.9	23.0%	115.3	10.7	25.1	9%	25%
CPPI & FOF	39.1	7.1%	42.3	-3.2	-24.0	-8%	-38%
Hybrid	28.6	5.2%	31.7	-3.1	-26.0	-10%	-48%
Other	2.4	0.4%	2.4	0.0	-0.1	-2%	-6%
Grand Total	547.4		541.9	5.5	-70.2	1%	-11%

Analyst

IGI Research
research@igi.com.pk
Tel: (+92-21) 111-234-234 Ext.: 974

Friday, 20 September 2019

Exhibit: Historical Asset Under Management (Asset Management Company & Asset Class Wise)

PKRbn	Aug-19	Jul-19	Jun-19	May-19	Apr-19	Mar-19	Feb-19	Jan-19	Dec-18	Nov-18	Oct-18	Sep-18	Aug-18
ALMEEZAN	98.4	99.4	91.3	95.8	95.0	94.6	93.7	94.8	88.0	91.0	93.2	91.6	93.4
NAFA	95.7	94.5	89.8	97.2	91.9	89.7	91.9	94.5	89.1	102.1	104.5	99.6	106.9
NIT	58.4	61.6	67.5	70.9	71.7	75.3	76.7	79.5	75.9	79.6	81.8	82.9	85.6
UBLFM	53.0	52.7	52.3	56.4	62.9	63.3	65.8	65.5	62.3	68.3	71.2	69.4	71.1
HBL	39.8	40.4	42.8	49.7	50.3	50.0	54.5	56.3	51.8	58.7	61.5	60.7	63.1
MCBAH	41.6	41.0	44.3	46.5	49.7	45.6	46.6	46.6	47.2	53.1	53.2	49.9	48.0
ABL	37.9	37.1	37.6	42.1	36.8	35.6	39.5	41.2	39.5	39.0	43.1	36.6	34.0
ALFALAH	38.3	30.5	31.6	32.7	34.5	34.4	34.2	33.2	31.4	31.5	31.4	29.3	28.0
ATLAS	24.8	25.8	25.7	28.7	27.5	28.4	30.5	28.3	29.1	32.6	32.3	30.1	31.5
JSIL	18.6	19.1	19.2	18.7	18.8	19.9	18.7	19.5	18.5	17.1	17.7	17.4	15.3
LAKSON	14.5	16.0	15.6	16.5	18.0	20.2	20.4	21.3	19.6	16.0	13.3	13.8	15.0
FAYSAL	10.9	11.0	8.5	9.5	11.0	9.4	9.2	8.1	9.3	7.3	7.6	7.8	8.1
AKD	3.2	3.4	3.1	3.1	3.4	3.6	3.7	4.0	3.7	3.9	4.1	4.1	4.3
PAKOMAN	3.8	3.3	3.3	3.3	4.2	4.9	6.3	5.4	5.1	4.9	5.1	5.2	5.1
HABIB	5.6	3.1	3.4	3.2	3.1	3.3	3.3	3.7	3.8	3.9	4.5	4.5	4.5
AWT	1.9	1.9	1.8	1.7	1.6	1.5	1.6	1.6	1.7	1.7	1.7	1.5	1.8
786	0.6	0.6	0.7	0.7	0.7	0.7	0.8	0.8	0.7	0.8	0.8	0.7	0.7
BMA	0.3	0.4	0.3	1.0	0.8	0.7	0.7	1.1	1.3	1.4	1.2	1.0	1.1
FCIL	0.1	0.1	0.1	0.1	0.1	0.1	0.1	0.1	0.1	0.2	0.2	0.1	0.1
	0.0	0.0	0.0	0.0	0.0	0.0	0.0	0.0	0.0	0.0	0.0	0.0	0.0
Open Ended Funds	522.8	516.5	512.9	552.1	556.4	555.1	572.0	578.3	552.1	586.4	601.4	579.8	591.1
VPS	24.6	25.4	25.9	25.7	25.7	26.1	26.3	27.0	25.8	26.7	27.1	26.4	26.5
Conventional	336.2	330.9	333.4	360.9	366.0	361.0	377.8	379.6	363.5	391.8	401.1	381.8	390.1
Shariah Compliant	211.3	211.0	205.3	216.9	216.1	220.1	220.4	225.7	214.4	221.3	227.4	224.4	227.5
Grand Total	547.4	541.9	538.7	577.8	582.1	581.2	598.3	605.3	578.0	613.1	628.5	606.2	617.6
Money Market	211.6	191.3	167.3	184.2	183.9	164.9	176.4	169.5	163.3	170.0	167.9	147.8	146.3
Equity	139.8	159.0	177.9	192.1	198.0	213.6	218.2	229.6	210.8	236.9	247.9	242.4	250.3
Income	125.9	115.3	109.5	109.6	100.9	97.0	95.4	93.6	93.0	92.3	92.6	95.4	100.8
CPPI & FOF	39.1	42.3	46.1	50.7	55.8	58.9	59.0	61.4	61.0	60.2	64.9	65.0	63.1
Hybrid	28.6	31.7	35.5	38.8	41.0	44.2	46.5	48.6	47.4	51.2	52.6	53.1	54.6
Other	2.4	2.4	2.5	2.5	2.5	2.6	2.7	2.6	2.4	2.5	2.6	2.5	2.5
Grand Total	547.4	541.9	538.7	577.8	582.1	581.2	598.3	605.3	578.0	613.1	628.5	606.2	617.6

Exhibit: Conventional and Shariah Compliant Funds

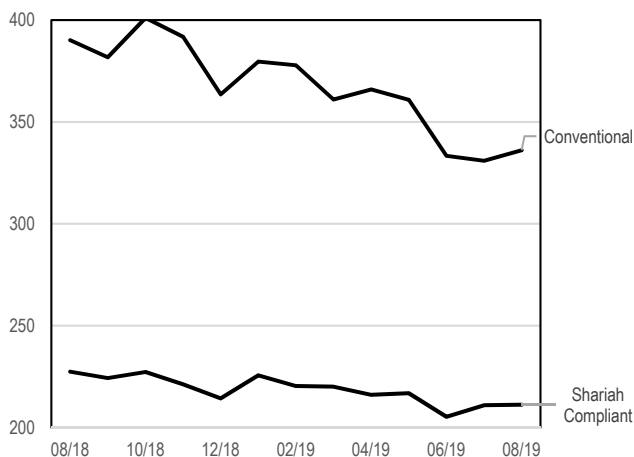
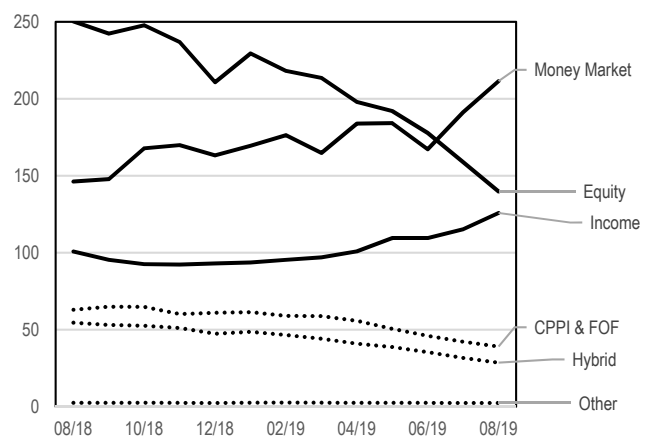


Exhibit: Asset Class wise Fund AUMs



Fund Performance Summary

Return wise, Money Market fund yielded the highest median return of 12.3% on 30days basis, with a maximum return of 13.01%. Equity fund showed a negative 8.44% median return with a minimum of 16.3%.

Exhibit: Category Wise Return

Median					
in %age	30D	90D	180D	270D	365D
Balanced & Asset Allocation	-3.77	-9.56	-14.88	-14.31	-16.45
Capital protected & Funds-of-Funds	-0.79	-2.28	-3.29	-2.27	-3.01
Equity	-8.44	-19.31	-27.29	-27.05	-31.70
Income	11.82	11.34	10.28	9.69	8.98
Money Market	12.27	11.99	10.76	10.51	9.78
Other	-7.10	-17.58	-25.16	-24.71	-29.80
Maximum					
in %age	30D	90D	180D	270D	365D
Balanced & Asset Allocation	32.94	20.42	9.65	11.64	14.07
Capital protected & Funds-of-Funds	20.39	12.09	6.41	7.41	7.10
Equity	-3.40	-12.48	-19.98	-18.01	-20.57
Income	20.98	16.59	12.12	12.21	10.79
Money Market	13.01	16.94	12.75	11.52	10.52
Other	2.81	18.31	25.69	30.27	47.80
Minimum					
in %age	30D	90D	180D	270D	365D
Balanced & Asset Allocation	-8.57	-17.11	-25.89	-25.08	-30.70
Capital protected & Funds-of-Funds	-6.59	-15.18	-23.14	-22.60	-26.94
Equity	-16.29	-34.65	-41.62	-47.31	-53.39
Income	-326.25	-111.32	-54.71	-35.41	-25.09
Money Market	10.78	10.42	9.38	9.13	8.33
Other	-8.71	-20.66	-30.53	-30.58	-35.91
Average					
in %age	30D	90D	180D	270D	365D
Balanced & Asset Allocation	-2.46	-7.53	-12.58	-11.97	-14.53
Capital protected & Funds-of-Funds	-0.60	-3.24	-6.24	-5.41	-6.81
Equity	-8.62	-19.80	-28.22	-28.21	-33.01
Income	6.55	9.10	8.96	8.95	8.40
Money Market	12.15	12.10	10.83	10.46	9.66
Other	-4.33	-6.64	-10.00	-8.34	-5.97

Sector Allocation

E&Ps sector remained top choice of Mutual Funds

E&Ps sector remained top pick of the mutual fund as it secured lion share of 29.4% of the total invested equity asset. In addition, script wise the OGDC followed by ENGRO and PPL respectively were top preferred invested companies.

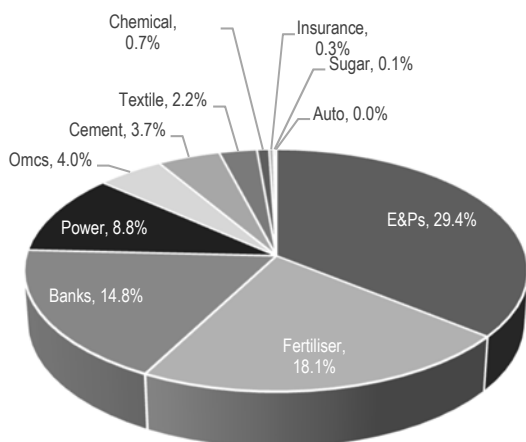


Exhibit: Sector-holding (as percentage of total assets)

SECTOR	ABL	ALFA	HBL	JSIL	MCB	MEEZ	NAFA	NIT	UBL	TOTAL
E&Ps	28.0%	31.0%	29.3%	24.5%	26.4%	35.8%	23.4%	30.2%	27.0%	29.4%
Fertiliser	21.1%	19.6%	10.5%	15.0%	20.0%	19.5%	18.9%	13.5%	15.9%	18.1%
Banks	23.3%	18.5%	22.8%	29.1%	20.5%		25.4%	0.3%	19.8%	14.8%
Power	8.0%	9.2%	10.0%	12.2%	6.3%	8.9%	8.3%	7.3%	11.4%	8.8%
Omcs	4.6%	2.8%	7.5%		2.1%	7.4%	1.4%	5.9%		4.0%
Cement						7.9%		13.1%	6.2%	3.7%
Textile	5.9%	3.4%	0.2%		5.8%		4.8%	0.1%	0.2%	2.2%
Chemical	3.8%		0.7%		3.2%				0.1%	0.7%
Insurance	1.3%						0.3%		0.9%	0.3%
Sugar				7.3%						0.1%
Auto										
Pharma	0.5%							0.1%		0.0%
Food										
Tobacco								0.2%		0.0%
Refinery							0.0%			0.0%
Engineering										

Symbol	Aug-19	Jul-19
OGDC	14.27%	11.77%
ENGRO	12.22%	9.15%
PPL	9.68%	8.63%
HUBC	9.26%	6.75%
MARI	8.14%	8.58%
EFERT	7.90%	3.93%
POL	6.57%	5.19%
BAFL	4.35%	3.22%
LUCK	3.81%	2.94%
FFC	3.69%	5.21%
MEBL	2.90%	2.02%
UBL	2.86%	2.42%
HBL	2.72%	2.38%
BAHL	2.27%	6.06%
SNGP	1.98%	3.10%
PKGS	1.00%	1.85%
PSO	0.93%	4.89%
NML	0.84%	0.58%
GATM	0.73%	0.08%
EPCL	0.64%	0.47%
KOHC	0.51%	0.21%
AICL	0.47%	0.18%
MCB	0.29%	0.95%
LOTCHEM	0.20%	0.00%
INDU	0.16%	0.11%
FFBL	0.10%	0.06%
APL	0.09%	0.06%
KEL	0.08%	0.09%
FABL	0.07%	0.07%
PKGP	0.05%	0.04%
HASCOL	0.04%	0.03%

Exhibit: Top 25 individual stock holding (as percentage of total equity asset)

SYMBOL	ABL	ALFA	HBL	JSIL	MCB	MEEZ	NAFA	NIT	UBL	TOTAL
OGDC	14.7%	14.4%	13.6%	11.6%	13.3%	16.4%	12.7%	17.5%	12.1%	14.3%
ENGRO	11.6%	13.7%	9.6%	4.1%	10.8%	14.9%	11.7%	9.7%	10.8%	12.2%
PPL	8.4%	13.1%	12.2%	10.8%	11.0%	10.8%	8.6%	13.6%	4.8%	9.7%
HUBC	10.3%	10.0%	11.6%	7.2%	7.6%	6.8%	11.4%	11.5%	11.7%	9.3%
MARI	11.9%	9.2%	11.9%	5.1%		10.6%	3.8%	5.8%	12.8%	8.1%
EFERT	3.7%	9.5%	6.4%	5.7%	9.2%	11.3%	9.2%	6.2%		7.9%
POL		4.8%	2.7%	1.6%	12.7%	9.2%	2.8%	10.7%	4.7%	6.6%
BAFL	6.7%	5.1%	7.2%	13.5%	8.9%		5.8%		5.1%	4.3%
LUCK						10.1%	1.0%	12.4%		3.8%
FFC	8.9%			4.7%	5.9%		7.0%	0.1%	6.9%	3.7%
MEBL	6.1%	3.0%	1.5%	2.2%	2.0%	1.3%	4.7%		4.9%	2.9%
UBL	4.5%	4.2%	6.1%	6.9%			6.7%		4.5%	2.9%
HBL	4.5%	4.4%	6.5%				5.8%		5.2%	2.7%
BAHL	4.2%			9.1%	5.9%		5.0%	0.2%	0.9%	2.3%
SNGP		2.3%	0.8%		2.5%	4.5%	0.2%			2.0%
PKGS						3.1%		0.1%		1.0%
PSO	1.6%		7.4%			0.7%	0.2%	0.2%		0.9%
NML	2.6%		1.0%				0.8%		3.2%	0.8%
GATM					5.5%					0.7%
EPCL	0.2%	6.3%			3.0%					0.6%
KOHC									3.6%	0.5%
AICL							0.5%		2.7%	0.5%
MCB					0.2%		0.8%		0.8%	0.3%
LOTCHEM					1.5%					0.2%
INDU								6.4%		0.2%

Fund Performance

Fund Name		30d	90D	180D	270D	365D
Balanced & Asset Allocation						
Alfalah GHP Value Fund	ALFALAH	-3.76	-8.82	-12.67	-11.25	-14.82
Allied Finergy Fund	ABL	-8.57	-15.35	-16.84	-13.85	
Askari Asset Allocation Fund	PAKOMAN	-1.5	-4.26	-8.51	-8.68	-11.2
Faysal Asset Allocation Fund	FAYSAL	-1.1	-5.8	-14.84	-15.28	-24.28
First Habib Asset Allocation Fund	HABIB	-4.49	-11.16	-13.14	-14.68	-15.69
Lakson Asset Allocation Developed Markets Fund	LAKSON	-1.4	6.31	9.65	11.64	14.07
Lakson Tactical Fund	LAKSON	-4.99	-11.67	-17.61	-17.05	-19.22
MCB Pakistan Asset Allocation Fund	MCBAH	-4.29	-11.62	-16.12	-15.4	-17.66
MCB Pakistan Frequent Payout Fund	MCBAH	0.87	2.44	5.02	6.61	7.82
NBP Sarmaya Izafa Fund (Formerly: NAFA Asset Allocation Fund)	NAFA	-3.85	-9.5	-15.34	-14.57	-15.8
Pak Oman Advantage Asset Allocation Fund	PAKOMAN	-2.74	-8.14	-12.96	-13.29	-16.45
AWT Asset Allocation Fund (Formerly: PIML Asset Allocation Fund)	AWT	0.04	-4.94	-10.41	-9.74	-16.45
UBL Asset Allocation Fund	UBLFM	-2.54	-6.58	-8.84	-6.99	-6.9
First Dawood Mutual Fund	786	-0.38	-4.92	-15.43	-18.53	-25.89
HBL Multi Asset Fund	HBL	-5.04	-10.51	-14.89	-13.22	-15.8
NBP Balanced Fund (Formerly: NAFA Multi Asset Fund)	NAFA	-3.77	-8.95	-14.7	-14.04	-15.2
Pakistan Capital Market Fund	MCBAH	-4.59	-10.7	-16.07	-15.15	-17.33
Unit Trust of Pakistan	JSIL	-5.23	-13.29	-20.8	-19.9	-24.27
ABL Islamic Asset Allocation Fund	ABL	-2.23	-4.06	-5.93	-4.99	-5.07
Al Ameen Islamic Asset Allocation Fund	UBLFM	-3.59	-7.92	-11.38	-9.86	-10.51
Alfalah GHP Islamic Value Fund	ALFALAH	-4.46	-10.04	-14.87	-13.99	-17.46
Alhambra Islamic Asset Allocation Fund (Formerly: Pak. Intl. Element Islamic Asset Allocation Fund)	MCBAH	-6.55	-13.9	-18.52	-17.5	-18.96
Askari Islamic Asset Allocation Fund	PAKOMAN	32.94	20.42	9.59	10.72	5.03
Dawood Islamic Fund	786	0.26	0.59	-4.32	-4.67	-10.69
Faysal Islamic Asset Allocation Fund	FAYSAL	-3.7	-9.61	-17.98	-18.22	-24.96
HBL Islamic Asset Allocation Fund	HBL	-2.39	-5.04	-6.99	-5.36	-5.6
Lakson Islamic Tactical Fund	LAKSON	-5.66	-13.51	-20.67	-20.23	-22.2
Meezan Asset Allocation Fund	ALMEEZAN	-7.69	-17.11	-25.89	-25.08	-30.7
NBP Islamic Regular Income Fund (Formerly: NBP Aitemaad Regular Payment Fund)	NAFA	-5.71	-11.37	-19.24	-20.04	
NBP Islamic Sarmaya Izafa Fund (Formerly: NAFA Islamic Asset Allocation Fund)	NAFA	-4.7	-10.81	-18.03	-17.76	-19
Pak Oman Islamic Asset Allocation Fund	PAKOMAN	-2.8	-9.71	-16.2	-15.89	-20.54
Meezan Balanced Fund	ALMEEZAN	-5.05	-11.53	-17.67	-16.79	-20.26
Capital protected & Funds-of-Funds						
Alfalah Capital Preservation Fund II	ALFALAH	0.89	1.56	1.43	3.71	3.55
Allied Capital Protected Fund	ABL	0.54	1.75	3.94	5.62	6.54
UBL Capital Protected Fund III	UBLFM	-0.02	-0.17	0.11	1.06	1.43
UBL Special Savings Plan I	UBLFM	19.38	10.21	4.68	7.41	
UBL Special Savings Plan II	UBLFM	19.31	10.21	6.41		
UBL Special Savings Plan III	UBLFM	20.39	12.09			
UBL Special Savings Plan IV	UBLFM	15.51	10.52			
UBL Special Savings Plan VI	UBLFM	9.08				
NAFA Islamic Principal Protected Fund II	NAFA	-0.74	-2.34	-4.07	-3.04	-3.15
ABL Financial Planning Fund (Active Plan)	ABL	-1.18	-6.2	-9.28	-9.39	-11.69
ABL Financial Planning Fund (Conservative Plan)	ABL	0.21	-0.65	-0.43	0.83	1
ABL Financial Planning Fund (Strategic Allocation Plan)	ABL	-0.59	-4.48	-6.83	-5.62	-6.97
Alfalah GHP Prosperity Planning Fund (Alfalah GHP Active Allocation Plan)	ALFALAH	0.78	-0.22	-4.56	-2.93	-5.37
Alfalah GHP Prosperity Planning Fund (Alfalah GHP Conservative Allocation Plan)	ALFALAH	0.8	2.29	2.4	4.29	4.84
Alfalah GHP Prosperity Planning Fund (Alfalah GHP Moderate Allocation Plan)	ALFALAH	-0.68	-1.96	-3.72	-1.98	-3.01
HBL Financial Planning Fund (Active Allocation Plan)	HBL	-3.14	-6.92	-9.67	-7.81	-10.79
HBL Financial Planning Fund (Conservative Allocation Plan)	HBL	-1	-1.81	-1.79	0.13	0.48

Fund Name		30d	90D	180D	270D	365D
HBL Financial Planning Fund (Strategic Allocation Plan)	HBL	1.1	-0.62	-3.28	-1.44	-3.75
JS Fund of Funds	JSIL	0.96	2.45	1.13	2.69	-1.64
UBL Active Principal Preservation Plan I	UBLFM	0.56	-0.71	-1.2	0.39	1.07
UBL Active Principal Preservation Plan II	UBLFM	-0.23	-0.99	-1.24	0.18	1.64
UBL Active Principal Preservation Plan III	UBLFM	-0.83	-3.14	-4.06	-2.57	
ABL Islamic Financial Planning Fund (Active Allocation Plan)	ABL	-3.41	-9.13	-13.92	-14.27	-15.46
ABL Islamic Financial Planning Fund (Aggressive Allocation Plan)	ABL	-2.98	-8.09	-12.99	-13.48	-14.78
ABL Islamic Financial Planning Fund (Conservative Allocation Plan)	ABL	-0.46	-1.35	-1.93	-1.07	-0.61
ABL Islamic Financial Planning Fund (Strategic Allocation Plan II)	ABL	-2.58	-4.19	-8.12	-8.11	-8.51
ABL Islamic Financial Planning Fund (Strategic Allocation Plan III)	ABL	0.43	-0.92	-2.25	-1.71	-2.09
ABL Islamic Financial Planning Fund (Strategic Allocation Plan IV)	ABL	0.44	-0.99	-2.56	-2.05	-2.23
ABL Islamic Financial Planning Fund (Strategic Allocation Plan)	ABL	0.64	-0.42	-2.69	-2.49	-3.25
Al Ameen Islamic Active Allocation Plan IX	UBLFM	-2.32	-11.39	-17.25	-17.14	-17.87
Al Ameen Islamic Active Allocation Plan VI	UBLFM	-3.48	-11.77	-17.2	-17.07	-17.05
Al Ameen Islamic Active Allocation Plan VII	UBLFM	-3.13	-10.32	-15.06	-14.52	-15.3
Al Ameen Islamic Active Allocation Plan VIII	UBLFM	-3.22	-10.42	-17.33	-17.28	-18.02
Al Ameen Islamic Active Allocation Plan X	UBLFM	-3.23	-11.61	-17.15	-17.12	-17.85
Al Ameen Islamic Active Allocation Plan XI	UBLFM	-3.16	-11.55			
Alfalah GHP Islamic Prosperity Planning Fund (Alfalah GHP Islamic Active Allocation Plan II)	ALFALAH	0.53	1.17	-0.26	1.71	-0.94
Alfalah GHP Islamic Prosperity Planning Fund (Alfalah GHP Islamic Active Allocation Plan III)	ALFALAH	0.85	2.61	-0.8	1	-0.91
Alfalah GHP Islamic Prosperity Planning Fund (Alfalah GHP Islamic Balance Allocation Plan)	ALFALAH	0.64	1.46	1.52	3.41	3.74
Alfalah GHP Islamic Prosperity Planning Fund (Alfalah GHP Islamic Moderate Allocation Plan)	ALFALAH	0.65	2.37	2.54	4.52	5.76
Alfalah GHP Islamic Prosperity Planning Fund (Capital Preservation Plan IV)	ALFALAH	0.72	1.71	1.7	3.75	4.94
Alfalah GHP Islamic Prosperity Planning Fund (Capital Preservation Plan V)	ALFALAH	0.73	2.32	3.44		
Alhamra Islamic Active Allocation Fund	MCBAH	-5.82	-11.58	-14.53	-12.93	-13.22
Alhamra Islamic Active Allocation Fund II	MCBAH	-4.33	-9.01	-12.13	-10.32	-12.35
Atlas Islamic Fund of Funds (Atlas Aggressive Allocation Islamic Plan)	ATLAS	-5.35	-13.08	-19.45		
Atlas Islamic Fund of Funds (Atlas Conservative Allocation Islamic Plan)	ATLAS	-1.09	-2.47	-3.46		
Atlas Islamic Fund of Funds (Atlas Moderate Allocation Islamic Plan)	ATLAS	-3.45	-8.5	-12.73		
HBL Islamic Financial Planning Fund (Active Allocation Plan)	HBL	-3.56	-7.32	-11.38	-9.96	-12.88
HBL Islamic Financial Planning Fund (Conservative Allocation Plan)	HBL	-1.2	-2.12	-2.45	-0.76	-0.37
HBL Islamic Financial Planning Fund (Strategic Allocation Plan)	HBL	0.01	1.75	-0.12	1.47	-0.62
JS Islamic Hybrid Fund of Funds (JS Islamic Active Allocation Plan I)	JSIL	0.84	2.79	3	4.79	4.51
JS Islamic Hybrid Fund of Funds (Mufeed)	JSIL	-4.17	-9.49	-13.5	-12.96	-16.65
JS Islamic Hybrid Fund of Funds (Munafa)	JSIL	-5.25	-13.56	-20.75	-20.8	-26.47
JS Islamic Hybrid Fund of Funds (Mustahkem)	JSIL	-0.68	3.49	4.41	5.35	6.04
JS Islamic Hybrid Fund of Funds (Mustanad)	JSIL	-5.47	5.05	3.24	5.03	7.1
JS Islamic Hybrid Fund of Funds (Mutanasib)	JSIL	-0.62	1.16	0.72	2.09	0.51
JS Islamic Hybrid Fund of Funds II (JS Islamic Active Allocation Plan II)	JSIL	0.88	2.73	3.09	4.95	4.69
Meezan Financial Planning Fund of Funds (Aggressive)	ALMEEZAN	-6.59	-15.18	-23.14	-22.21	-26.48
Meezan Financial Planning Fund of Funds (Conservative)	ALMEEZAN	-1.5	-3.39	-5.01	-3.39	-4.08
Meezan Financial Planning Fund of Funds (MAAP I)	ALMEEZAN	-5.92	-14.02	-22.11	-22.6	-26.94
Meezan Financial Planning Fund of Funds (Moderate)	ALMEEZAN	-4.05	-9.26	-14.39	-13.1	-15.7
Meezan Strategic Allocation Fund (MSAP I)	ALMEEZAN	-5.89	-13.79	-21.59	-21.37	-25.47
Meezan Strategic Allocation Fund (MSAP II)	ALMEEZAN	-5.84	-13.72	-21.5	-20.79	-24.71
Meezan Strategic Allocation Fund (MSAP III)	ALMEEZAN	-5.96	-13.78	-21.73	-20.93	-24.86
Meezan Strategic Allocation Fund (MSAP IV)	ALMEEZAN	-6.09	-13.98	-21.96	-21.11	-25.04
Meezan Strategic Allocation Fund (MSAP V)	ALMEEZAN	-5.95	-13.76	-21.49	-20.78	-24.71
NAFA Islamic Active Allocation Plan I	NAFA	-4.35	-10.28	-17.15	-16.27	-16.52
NAFA Islamic Active Allocation Plan II	NAFA	0.91	2.37	-2.73	-1.66	-2.15
NAFA Islamic Active Allocation Plan III	NAFA	-4.42	-10.13	-16.85	-16.02	-16.25
NAFA Islamic Active Allocation Plan IV	NAFA	-4.49	-10.34	-17.09	-16.2	-16.4

Fund Name		30d	90D	180D	270D	365D
NAFA Islamic Active Allocation Plan V	NAFA	-4.56	-10.38	-17.32	-16.49	-16.8
NAFA Islamic Active Allocation Plan VI	NAFA	-4.58	-10.34	-16.85	-16.14	-16.39
NAFA Islamic Active Allocation Plan VII	NAFA	-3.64	-9.36	-16.07	-15.22	-15.57
NAFA Islamic Active Allocation Plan VIII	NAFA	0.88	2.19	-2.75	-1.79	-2.2
ABL Islamic Financial Planning Fund (Capital Preservation Plan I)	ABL	1.21	2.5			
Al Ameen Islamic Active Principal Preservation Plan I	UBLFM	-0.83	-2.02	-1.63	0.2	1.26
Al Ameen Islamic Active Principal Preservation Plan II	UBLFM	-0.83	-2.67	-2.23	-0.48	0.58
Al Ameen Islamic Active Principal Preservation Plan III	UBLFM	-1.2	-3.46	-2.96	-1.25	
Al Ameen Islamic Active Principal Preservation Plan IV	UBLFM	-0.64	-2.23	-1.58		
Atlas Islamic Fund of Funds (Atlas Islamic Capital Preservation Plan)	ATLAS	-1.5	-3.78	-5.66		
HBL Islamic Financial Planning Fund (Islamic Capital Preservation)	HBL	-2.5	-4.23	-5.77	-4.33	
JS Islamic Hybrid Fund of Funds II (JS Islamic Capital Preservation Allocation Plan I)	JSIL	0.95	2.91	3.48	5.73	6.52
JS Islamic Hybrid Fund of Funds II (JS Islamic Capital Preservation Allocation Plan II)	JSIL	0.96	2.94	3.45	5.69	6.54
JS Islamic Hybrid Fund of Funds II (JS Islamic Capital Preservation Allocation Plan III)	JSIL	0.94	2.85	3.79	6.19	
JS Islamic Hybrid Fund of Funds II (JS Islamic Capital Preservation Allocation Plan IV)	JSIL	0.97	2.9	5.42		
JS Islamic Hybrid Fund of Funds II (JS Islamic Capital Preservation Allocation Plan V)	JSIL	1.06	3.13			
JS Islamic Hybrid Fund of Funds III (JS Islamic Capital Preservation Allocation Plan VI)	JSIL	0.96				
Meezan Strategic Allocation Fund (Meezan Capital Preservation Plan III)	ALMEEZAN	0.58	-0.2	0.76	2.26	2.12
Meezan Strategic Allocation Fund II (Meezan Capital Preservation Plan IV)	ALMEEZAN	-0.83	-2.64	-2.76	-1.87	-1.45
Meezan Strategic Allocation Fund II (Meezan Capital Preservation Plan V)	ALMEEZAN	-1.19	-3.05	-3.3	-2.56	-2.39
Meezan Strategic Allocation Fund II (Meezan Capital Preservation Plan VI)	ALMEEZAN	-1.33	-3.54	-4.17	-3.57	-3.1
Meezan Strategic Allocation Fund II (Meezan Capital Preservation Plan VII)	ALMEEZAN	-1.5	-3.7	-4.47	-3.53	
Meezan Strategic Allocation Fund II (Meezan Capital Preservation Plan VIII)	ALMEEZAN		-1.03	-1.65		
Meezan Strategic Allocation Fund III (Meezan Capital Preservation Plan IX)	ALMEEZAN	-0.38	-2.78			
NAFA Islamic Capital Preservation Plan I	NAFA	0.04	0.59	-0.41	1.09	1.35
NAFA Islamic Capital Preservation Plan II	NAFA	0.04	-0.33	-2.79	-1.21	-0.84
NAFA Islamic Capital Preservation Plan III	NAFA	-0.07	-0.97	-3.06	-1.6	-1.39
NAFA Islamic Capital Preservation Plan IV	NAFA	-1.16	-2.33	-4.6	-3.15	
Faysal Sharia Planning Fund (Faysal Sharia Capital Preservation Plan)	FAYSAL	0.97				
NBP Islamic Capital Preservation Plan V	NAFA	-1.01	-2.49	-5.52		
Equity						
ABL Stock Fund	ABL	-8.53	-19.36	-25.56	-24.44	-28.66
AKD Opportunity Fund	AKD	-6.25	-14.32	-27.53	-28.85	-33.37
Alfalah GHP Alpha Fund	ALFALAH	-7.85	-17.99	-25.06	-23.92	-28.29
Alfalah GHP Stock Fund	ALFALAH	-7.59	-17.93	-24.73	-23.61	-28.08
Askari Equity Fund	PAKOMAN	-10.17	-25.34	-33.6	-33.66	-37.54
Atlas Stock Market Fund	ATLAS	-8.8	-19.88	-26.88	-26.74	-30.3
Faysal Stock Fund	FAYSAL	-3.4	-12.48	-23.58	-24.71	-34.39
First Capital Mutual Fund	FCIL	-7.47	-20.66	-30.96	-33.04	-42.25
First Habib Stock Fund	HABIB	-8.18	-18.93	-25.23	-26.18	-29.6
HBL Energy Fund	HBL	-13.95	-26	-33.68	-34.36	-39.37
HBL Equity Fund	HBL	-8.79	-18.84	-25.5	-23.87	-27.48
HBL Growth Fund–Class A (Formerly PICIC Growth Fund)	HBL	-16.29	-34.45	-40.91	-46.5	-52.89
HBL Growth Fund–Class B (Formerly PICIC Growth Fund)	HBL	-9.05	-19.53	-26.1	-24.49	-28.56
HBL Investment Fund–Class B (Formerly PICIC Investment Fund)	HBL	-8.9	-19.39	-25.96	-24.43	-28.47
HBL Investment Fund–Class A (Formerly PICIC Investment Fund)	HBL	-16.26	-34.65	-41.62	-47.31	-53.39
HBL Stock Fund	HBL	-8.89	-19.35	-25.98	-24.23	-28.32
JS Growth Fund	JSIL	-6.72	-17.61	-27.27	-27.06	-33.41
JS Large Cap Fund	JSIL	-8.1	-19.69	-27.79	-28.29	-34.63
JS Value Fund	JSIL	-7.12	-14.11	-26.36	-25.86	-31.71
Lakson Equity Fund	LAKSON	-7.98	-17.44	-26.78	-26.88	-31.01
MCB Pakistan Stock Market Fund	MCBAH	-7.02	-16.91	-23.37	-22.91	-26.1

Fund Name		30d	90D	180D	270D	365D
NAFA Financial Sector Fund	NAFA	-7.78	-17.26	-20.04	-18.65	-20.57
NBP Stock Fund (Formerly: NAFA Stock Fund)	NAFA	-6.99	-16.5	-25.73	-25.15	-28.36
National Investment Unit Trust	NIT	-5.59	-18.09	-27.31	-26.52	-33.63
AWT Stock Fund (Formerly: PIML Value Equity Fund)	AWT	-3.49	-18.21	-27	-27.2	-35.33
UBL Financial Sector Fund	UBLFM	-7.1	-16.68	-19.98	-18.01	-22.39
UBL Stock Advantage Fund	UBLFM	-7.99	-18.7	-26.16	-24.73	-28.3
ABL Islamic Stock Fund	ABL	-9.15	-19.02	-26.3	-25.96	-29.39
AKD Islamic Stock Fund	AKD	-4.7	-14.26	-27.97	-28.86	-34.75
Al Ameen Shariah Stock Fund	UBLFM	-8.57	-19.9	-29.36	-28.04	-30.68
Al Meezan Mutual Fund	ALMEEZAN	-9.26	-20.96	-31.08	-30.67	-36.04
Alfalah GHP Islamic Stock Fund	ALFALAH	-9.25	-19.75	-28.13	-27.08	-30.73
Alhamra Islamic Stock Fund (Formerly: MCB Pakistan Islamic Stock Fund)	MCBAH	-8.51	-18.19	-26.61	-27.04	-30.98
Atlas Islamic Stock Fund	ATLAS	-8.37	-19.63	-28.71	-28.39	-31.02
First Habib Islamic Stock Fund	HABIB	-8.63	-20.8	-29.41	-30.4	-33.41
HBL Islamic Equity Fund	HBL	-9.73	-20.17	-27.92	-26.6	-30.25
HBL Islamic Stock Fund	HBL	-9.8	-20.33	-29.33	-28.07	-31.68
JS Islamic Fund	JSIL	-7.54	-19.27	-28.4	-28.21	-31.78
Meezan Energy Fund	ALMEEZAN	-14.65	-28.83	-38.59	-40.05	-46.32
Meezan Islamic Fund	ALMEEZAN	-9.31	-20.96	-31.3	-30.69	-35.92
NBP Islamic Energy Fund (Formerly: NAFA Islamic Energy Fund)	NAFA	-12.98	-23.92	-34.55	-35.83	-40.74
NBP Islamic Stock Fund (Formerly: NAFA Islamic Stock Fund)	NAFA	-8.27	-18.19	-29.18	-29.95	-32.2
NIT Islamic Equity Fund	NIT	-8.83	-20.68	-30.39	-29.53	-36.99
AWT Islamic Stock Fund (Formerly: PIML Islamic Equity Fund)	AWT	-5.4	-16.01	-23.71	-24.32	-33.03
Income						
AKD Aggressive Income Fund (Formerly: AKD Income Fund)	AKD	11.82	9.98	9.51	9.1	4.28
Alfalah GHP Income Multiplier Fund	ALFALAH	12.04	12.77	10.68	8.73	7.91
Askari High Yield Scheme	PAKOMAN	10.19	11.31	10.75	9.87	9.01
BMA Chundrigar Road Savings Fund	BMA	10.88	10.48	9.71	9.55	8.79
Faysal Income & Growth Fund	FAYSAL	12.81	11.82	10.64	9.85	9.14
Pakistan Income Enhancement Fund	MCBAH	12.83	11.87	10.37	9.91	8.97
UBL Growth & Income Fund (Formerly: United Growth & Income Fund)	UBLFM	11.46	11.25	10.27	9.62	8.92
Al Ameen Islamic Aggressive Income Fund	UBLFM	2.54	7.31	7.69	7.1	6.86
ABL Government Securities Fund	ABL	12.79	11.21	9.63	9.67	8.9
ABL Income Fund	ABL	11.96	10.63	9.74	9.34	8.46
Alfalah GHP Income Fund	ALFALAH	11.61	11.49	10.41	10.11	8.97
Alfalah GHP Sovereign Fund	ALFALAH	11.82	11.26	10	9.86	8.8
Askari Sovereign Yield Enhancer	PAKOMAN	12.89	7.98	6.31	7.73	7.21
Atlas Income Fund	ATLAS	15.32	11.88	9.02	8.84	8.62
Atlas Sovereign Fund (Formerly: Atlas Sovereign Liquid Fund)	ATLAS	15	11.8	9.04	9.74	9.03
Dawood Income Fund	786	9.86	9.11	10.76	10.84	10.79
Faysal Financial Sector Opportunity Fund	FAYSAL	13.02	12.32	11.68	11.12	10.34
Faysal MTS Fund	FAYSAL	12.79	11.86	11.11	10.81	10.06
Faysal Savings Growth Fund	FAYSAL	11.66	11.61	10.29	9.5	8.85
First Habib Income Fund	HABIB	12.1	11.67	10.53	9.44	9.07
HBL Government Securities Fund	HBL	15.47	12.81	10.92	11.34	10.48
HBL Income Fund	HBL	13.5	12.17	11.09	10.65	10.12
JS Income Fund	JSIL	13.2	12.43	11.06	10.3	9.82
Lakson Income Fund	LAKSON	14.7	11.9	9.62	9.44	8.93
MCB DCF Income Fund	MCBAH	10.9	10.46	8.9	9.15	8.6
MCB Pakistan Sovereign Fund	MCBAH	20.98	16.59	12.12	12.21	10.36
NBP Financial Sector Income Fund (Formerly: NAFA Financial Sector Income Fund)	NAFA	12.77	12.19	11.47	11.16	10.39
NAFA Government Securities Savings Fund	NAFA	13.36	11.46	9.38	9.42	8.89

Fund Name		30d	90D	180D	270D	365D
NBP Income Opportunity Fund (Formerly: NAFA Income Opportunity Fund)	NAFA	11.06	11.3	10.82	10.57	9.95
NBP Government Securities Plan I	NAFA	17.48	8.56			
NBP Mahana Amdani Fund (Formerly: NAFA Savings Plus Fund)	NAFA	12.13	11.83	11.2	10.88	10.12
NBP Savings Fund (Formerly: NAFA Income Fund)	NAFA	12.21	11.71	11.14	10.41	10.35
NIT - Government Bond Fund	NIT	13.24	12.12	10.45	10.03	9.21
NIT - Income Fund	NIT	11.75	10.55	8.67	8.32	8.08
Pak Oman Government Securities Fund	PAKOMAN	11.36	9.03	7.53	7.94	7.22
Pakistan Income Fund	MCBAH	11.28	11.39	9.64	9.58	9.05
AWT Income Fund (Formerly: PIML Income Fund)	AWT	15.51	12.97	12	11.28	10.59
UBL Government Securities Fund	UBLFM	13.12	11.19	8.94	9.53	8.72
UBL Income Opportunity Fund (UIOF) (Formerly: UBL Financial Sector Bond Fund)	UBLFM	12.24	11.41	10.01	9.87	9.39
ABL Islamic Income Fund (Formerly: ABL Islamic Cash Fund)	ABL	11.75	11.87	10.82	10.33	9.54
AKD Islamic Income Fund	AKD	11.51	11.32	10.32	9.89	9.39
Al Ameen Islamic Sovereign Fund	UBLFM	10.69	10.73	9.85	9.45	8.55
Alfalah GHP Islamic Income Fund	ALFALAH	11.1	11.01	10.06	9.69	8.74
Alhamra Daily Dividend Fund	MCBAH	11.9	11.46	10.62	10.21	9.34
Alhamra Islamic Income Fund (Formerly: MCB Islamic Income Fund)	MCBAH	10.36	10.82	10.13	9.86	9.12
Askari Islamic Income Fund	PAKOMAN	-326.25	-111.32	-54.71	-35.41	-25.09
Atlas Islamic Income Fund	ATLAS	12.13	12.05	10.71	10.19	9.56
Faysal Islamic Savings Growth Fund	FAYSAL	11.37	10.72	9.76	9.26	8.76
First Habib Islamic Income Fund	HABIB	13.69	10.83	9.17	8.11	7.62
HBL Islamic Income Fund	HBL	11.72	11.11	10.13	9.54	8.98
JS Islamic Income Fund	JSIL	11.55	11.38	10.51	9.63	9.52
Meezan Islamic Income Fund	ALMEEZAN	11.34	10.92	10.26	9.62	8.94
Meezan Sovereign Fund	ALMEEZAN	10.97	10.64	10.28	9.33	8.86
NBP Active Allocation Riba Free Savings Fund (Formerly:NAFA Active Allocation Riba Free Savings Fund)	NAFA	10.46	8.95	8.71	8.88	8.42
NBP Riba Free Savings Fund (Formerly: NAFA Riba Free Savings Fund)	NAFA	11.36	11.36	10.82	10.45	9.78
NBP Islamic Mahana Amdani Fund (Formerly: NBP Aitemaad Mahana Amdani Fund)	NAFA	11.96	11.95	11.2	10.79	
NBP Islamic Savings Fund (Formerly: NAFA Islamic Income Fund)	NAFA	11.15	10.69	10.32	10.11	9.5
NIT Islamic Income Fund	NIT	11.48	11.82	10.86	9.88	9.21
Pak Oman Advantage Islamic Income Fund	PAKOMAN	10.04	5.58	5.92	6.64	6.71
AWT Islamic Income Fund (Formerly: PIML Islamic Income Fund)	AWT	10.95	10.58	9.52	9.05	8.34
Money Market						
ABL Cash Fund	ABL	12.27	12.28	11.37	10.92	10.11
AKD Cash Fund	AKD	12.05	11.87	10.01	9.7	8.92
Alfalah GHP Cash Fund	ALFALAH	13.01	16.94	12.75	11.52	10.2
Alfalah GHP Money Market Fund	ALFALAH	12.51	12.35	11.22	10.9	10.19
Askari Sovereign Cash Fund	PAKOMAN	12.64	12.2	10.76	10.57	9.79
Atlas Money Market Fund	ATLAS	12.62	12.42	11.06	10.74	9.94
BMA Empress Cash Fund	BMA	11.98	11.66	10.62	10.36	9.76
Faysal Money Market Fund	FAYSAL	12.42	12.36	11.25	10.76	9.98
First Habib Cash Fund	HABIB	12.36	12.15	10.97	10.51	9.7
HBL Cash Fund	HBL	12.37	12.07	11.13	10.69	9.92
HBL Money Market Fund	HBL	12.01	11.69	10.67	10.24	9.48
JS Cash Fund	JSIL	12.89	12.64	11.64	11.27	10.52
Lakson Money Market Fund	LAKSON	12.15	11.92	10.82	10.51	9.8
MCB Cash Management Optimizer	MCBAH	12.54	12.16	11.14	10.74	9.95
NBP Government Securities Liquid Fund (Formerly: NAFA Government Securities Liquid Fund)	NAFA	12.3	11.96	10.61	10.34	9.6
NBP Money Market Fund (Formerly: NAFA Money Market Fund)	NAFA	12.46	12.28	11.41	10.97	10.09
NIT Money Market Fund (Formerly: NIT Government Treasury Fund)	NIT	12.61	11.96	11.22	10.82	9.89
Pakistan Cash Management Fund	MCBAH	11.54	11.99	9.38	9.13	8.33
UBL Liquidity Plus Fund	UBLFM	12.21	12.01	10.53	10.31	9.61

Fund Name		30d	90D	180D	270D	365D
UBL Money Market Fund	UBLFM	11.91	11.69	10.36	10.15	9.45
Al Ameen Islamic Cash Fund	UBLFM	11.78	11.27	10.43	10.14	9.4
HBL Islamic Money Market Fund	HBL	11.31	11.23	10.32	9.92	9.14
Meezan Cash Fund	ALMEEZAN	10.78	10.42	9.79	9.52	8.8
Meezan Rozana Amdani Fund	ALMEEZAN	11.54	11.17	10.62		
NBP Islamic Money Market Fund(Formerly: NAFA Islamic Money Market Fund)	NAFA	11.61	11.75	10.63	10.22	9.32
Other						
AKD Index Tracker Fund	AKD	-7.1	-17.58	-25.16	-24.71	-29.8
KSE Meezan Index Fund	ALMEEZAN	-8.71	-20.66	-30.53	-30.58	-35.91
Meezan Gold Fund	ALMEEZAN	2.81	18.31	25.69	30.27	47.8

Friday, 20 September 2019



Contact: **Investor Services**

IGI Finex Securities Limited
UAN: (+92-21) 111-234-234
Website: www.igisecurities.com.pk

Disclaimer

This document has been prepared by IGI Finex Securities Limited and all the information (including any comments, opinions, and analyses) contained in this document (the information) is for informational purposes only and should not be considered individual investment advice or recommendations to invest in any security, fund or to adopt any investment strategy. Because market and economic conditions are subject to rapid change, the information is rendered as of the date of publication and may change without notice. The information is not intended as a complete analysis of every material fact regarding the country, region, market, industry, investment or strategy. Whilst every effort has been made to ensure that the information is not misleading or unreliable, IGI Finex Securities Limited makes no representation as to the accuracy, completeness or timeliness of the information. Neither IGI Finex Securities Limited nor any director, officer or employee of IGI Finex Securities Limited shall in any manner be liable or responsible for any loss that may be occasioned as consequence of a party relying on the information. This document takes no account of the investment objectives, financial situation and particular needs of investors, who shall seek further professional advice before making any investment decision.

All investments in mutual funds are subject to market risk. The NAV, any dividends and/or returns have been provided by the Asset Management Company/ (ies), and are dependent on forces affecting the capital markets. Past performance is not necessarily indicative of future results. IGI Finex Securities Limited does not take any responsibility for the financial soundness of any scheme or guarantee any returns on investment made in the products by users. The information, data, analysis and opinions contained herein (1) includes the confidential and proprietary information of IGI Finex Securities Limited, (2) may not be copied or redistributed, and (3) are not warranted to be complete, accurate or timely. IGI Finex Securities Limited shall not be responsible for any trading decisions, damage or other losses resulting thereof.

Contact Offices

IGI Finex Securities Limited

Trading Rights Entitlement Certificate (TREC) Holder of
Pakistan Stock Exchange Limited |
Corporate member of Pakistan Mercantile Exchange Limited

Head Office

Suite No 701-713, 7th Floor, The Forum, G-20,
Khayaban-e-Jami Block-09, Clifton, Karachi-75600
UAN: (+92-21) 111-444-001 | (+92-21) 111-234-234
Fax: (+92-21) 35309169, 35301780
Website: www.igisecurities.com.pk

Stock Exchange Office

Room # 134, 3rd Floor, Stock Exchange Building,
Stock Exchange Road, Karachi.
Tel: (+92-21) 32429613-4, 32462651-2
Fax: (+92-21) 32429607

Lahore Office

Shop # G-009, Ground Floor,
Packages Mall
Tel: (+92-42) 38303560-69
Fax: (+92-42) 38303559

Faisalabad Office

Room #: 515-516, 5th Floor, State Life
Building, 2- Liaqat Road
Tel: (+92-41) 2540843-45
Fax: (+92-41) 2540815

Multan Office

Mezzanine Floor, Abdali Tower,
Abdali Road
Tel: (92-61) 4512003, 4571183

Peshawar Office

2nd Floor, The Mall Tower,
35 The Mall Saddar Cantt.
Tel: (92-91) 5273035, 5223882

Islamabad Office

Mezzanine Floor, Office 5, 6 & 7, Kashmir Plaza,
Block- B, Jinnah Avenue, Blue Area
Tel: (+92-51) 2604861-2, 2604864, 2273439
Fax: (+92-51) 2273861

Rahim Yar Khan Office

Plot # 12, Basement of Khalid Market,
Model Town, Town Hall Road
Tel: (+92-68) 5871652-3
Fax: (+92-68) 5871651

Abbottabad Office

Ground Floor, Al Fatah Shopping Center ,
Opp. Radio Station, Mansehra Road
Tel: (+92-99) 2408243 - 44

IGI Finex Securities Limited
Research Identity Number: BRP009
© Copyright 2018 IGI Finex Securities Limited

JamaPunji

Fundamental knowledge and understanding of financial market is crucial for general public and lack of financial literacy and capability makes general public vulnerable to frauds. The Securities and Exchange Commission of Pakistan (SECP) while recognizing the importance of investor education has initiated an investor education program, 'JamaPunji'.

It aspires to improve their financial literacy and capability which can help them make sound financial decisions through the provision of general financial education across the entire financial sector, ranging from banking and insurance to investing and retirement planning as well as generic money management.

JamaPunji would help the investors to take prudent measures before entering into a contractual agreement with a financial services provider, educate investors on strategies to mitigate risks associated with various investment products, engender investor confidence, and lead to an effective investor protection regime.



Securities and Exchange Commission of Pakistan
National Insurance Corporation Building,
Jinnah Avenue,
Islamabad-44000, Pakistan.

+92 (51) 111 117 327

www.jamapunji.pk

info@jamapunji.pk

jamapunji.pk

jamapunji_pk

jamapunji

JamaPunji Investor Education Portal

سرمایہ کاری سمجھداری کے ساتھ

- ✓ Investment Banks
- ✓ Islamic Finance
- ✓ Capital Market
- ✓ Leasing Companies
- ✓ Mutual Fund
- ✓ Pension Fund